

ANKER



**CITY** LINE  
**GRID**

# CITYLINE GRID

CITYLINE ist eine Teppichfliesen-Kollektion, die von der Dynamik und Struktur moderner Metropolen inspiriert ist. Mit ihren vier Dessin-Varianten – Rise, Edge, Grid und Core – spiegelt sie die Architektur, die Perspektiven und das rhythmische Zusammenspiel von Linien und Formen in der Stadt wider.

Als 50x50 cm getuftete Teppichfliese vereint CITYLINE Ästhetik mit Funktionalität. Ob in modernen Büros, öffentlichen Räumen oder Hotels: CITYLINE bringt die Energie der Stadt nach innen und schafft Räume mit Charakter, Tiefe und einer urbanen Atmosphäre.

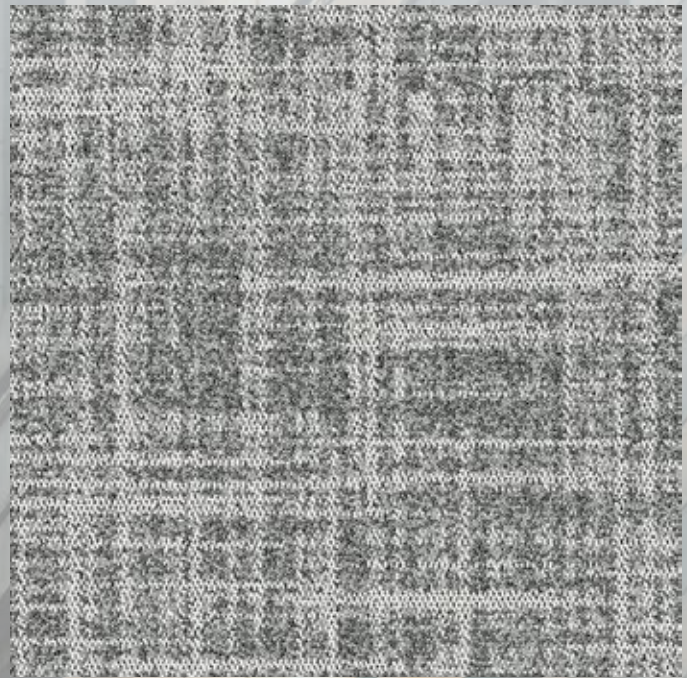
Grid interpretiert das urbane Raster neu und sorgt für eine harmonische, geordnete Flächenwirkung.

CITYLINE is a carpet tile collection inspired by the dynamism and structure of modern metropolises. With its four design variants – Rise, Edge, Grid, and Core – it reflects the architecture, perspectives, and rhythmic interplay of lines and shapes found in the city.

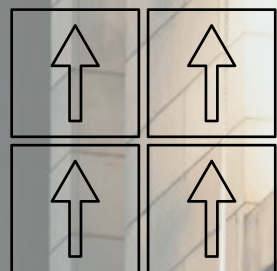
As a 50x50 cm tufted carpet tile, CITYLINE combines aesthetics with functionality. Whether in modern offices, public spaces, or hotels, CITYLINE brings the energy of the city indoors, creating spaces with character, depth, and an urban atmosphere.

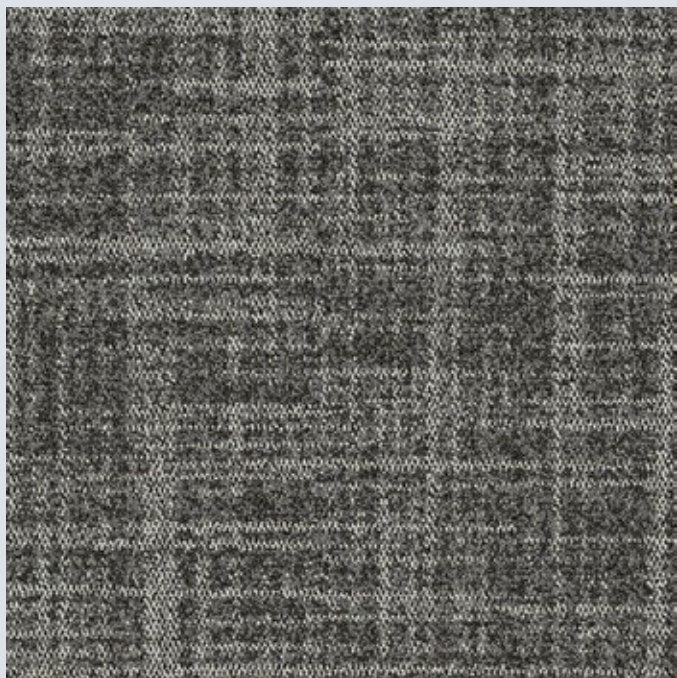
Grid reinterprets the urban grid, offering a balanced and structured surface design.



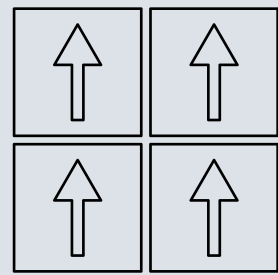


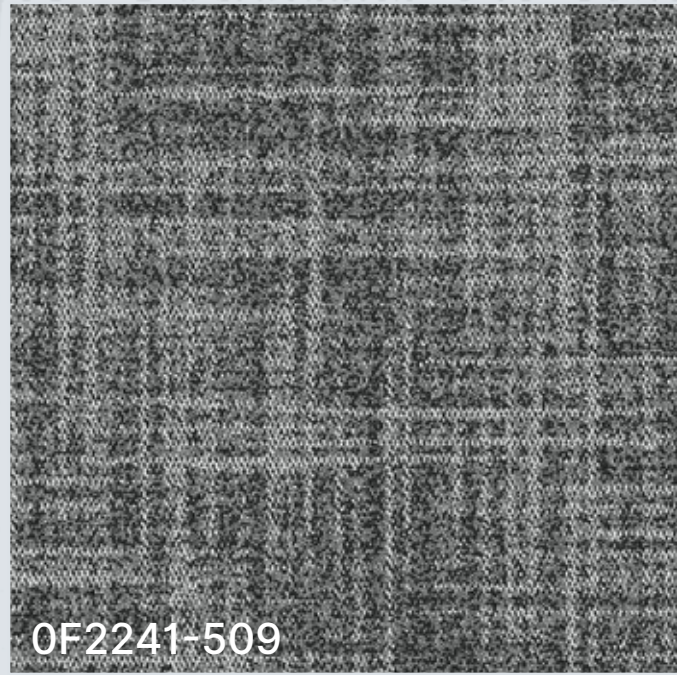
OF2241-805



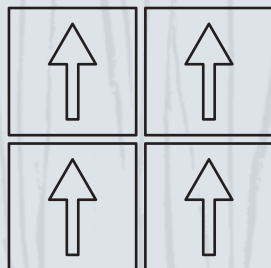


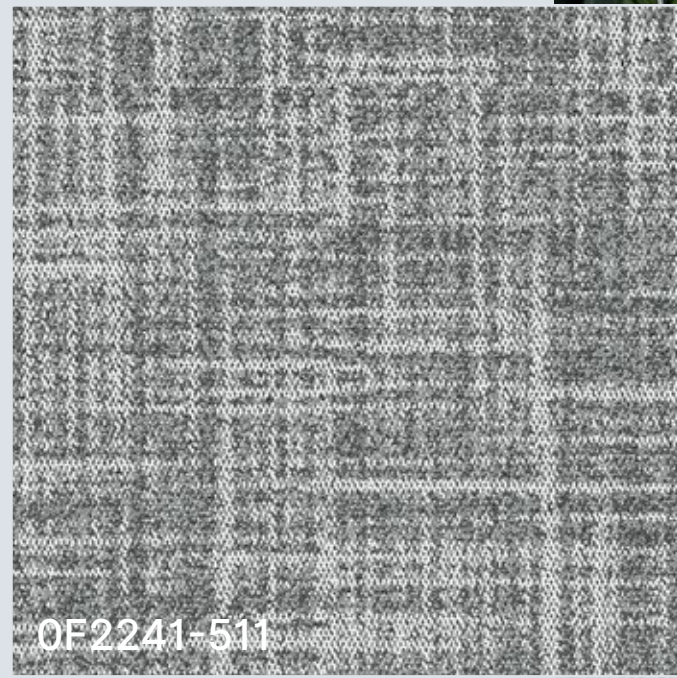
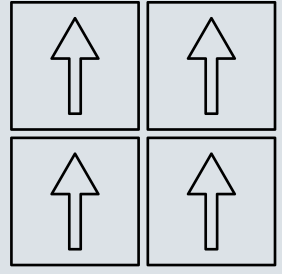
OF2241-701





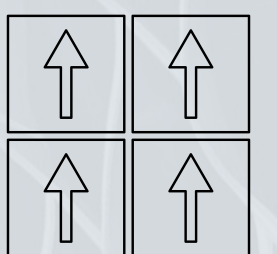
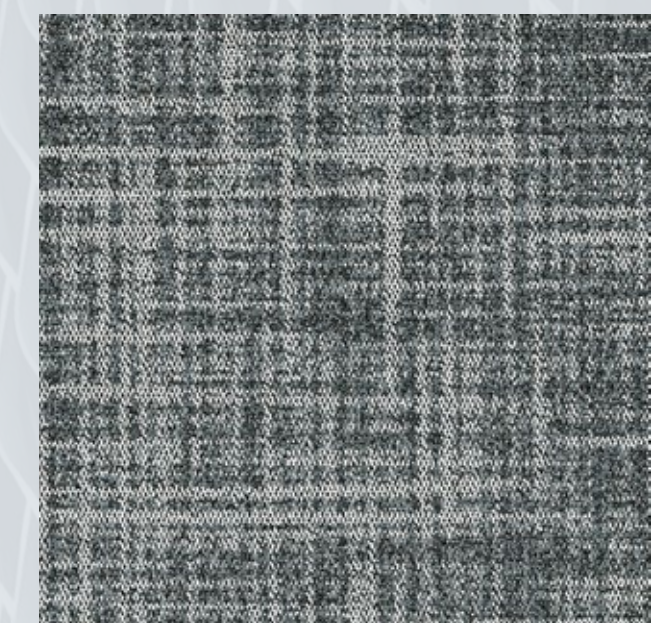
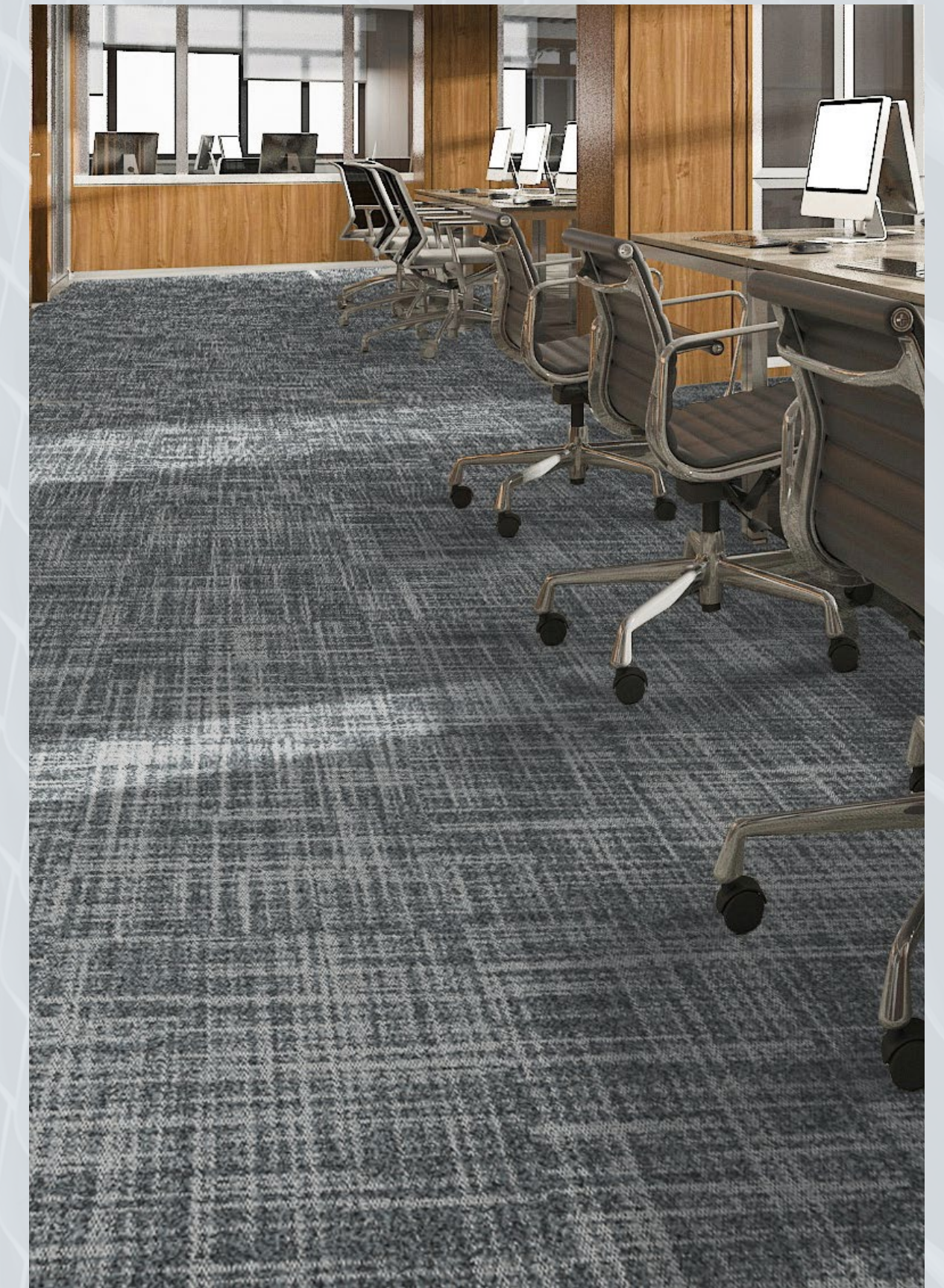
0F2241-509



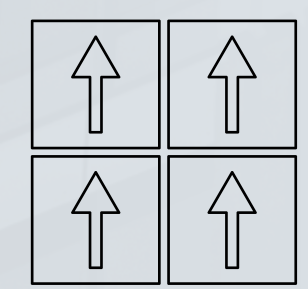
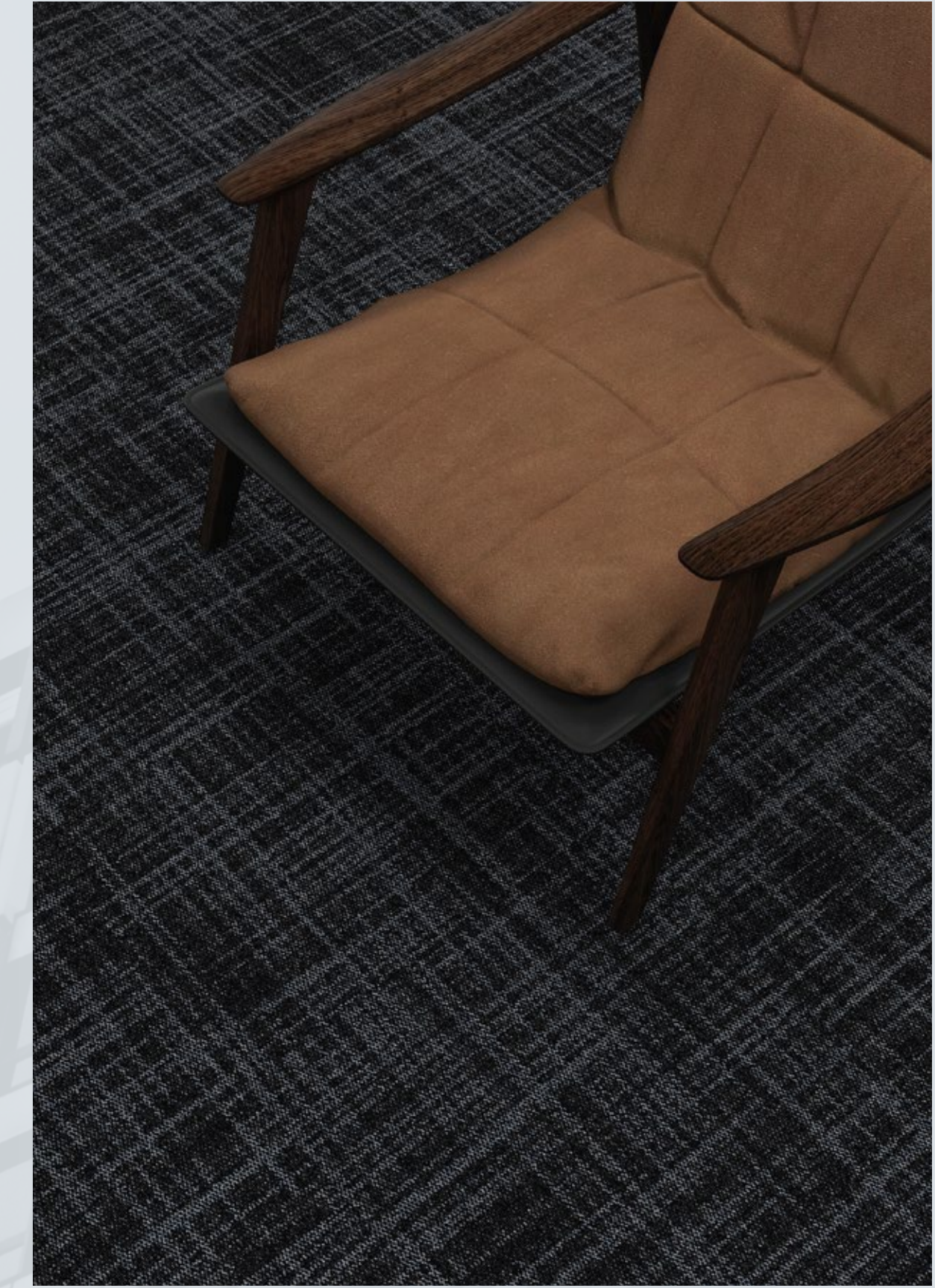


QE2241-511

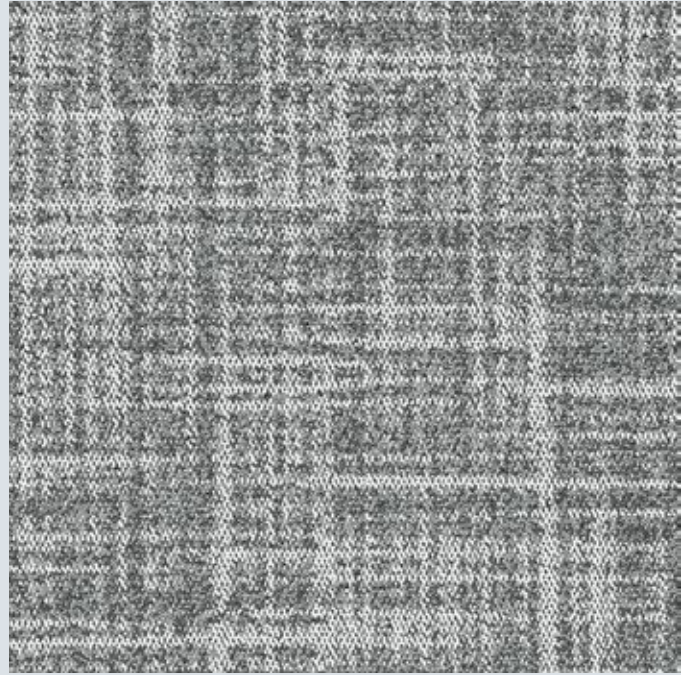




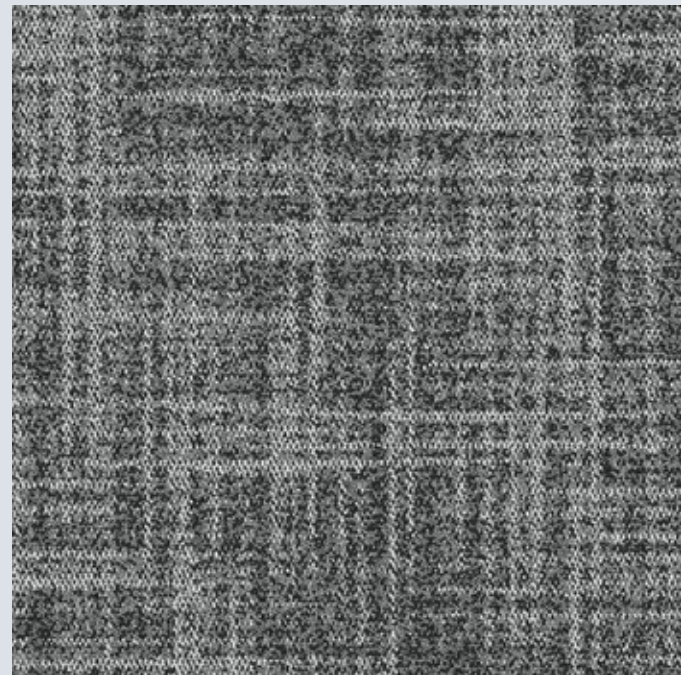
OF2241-510



OF2241-901

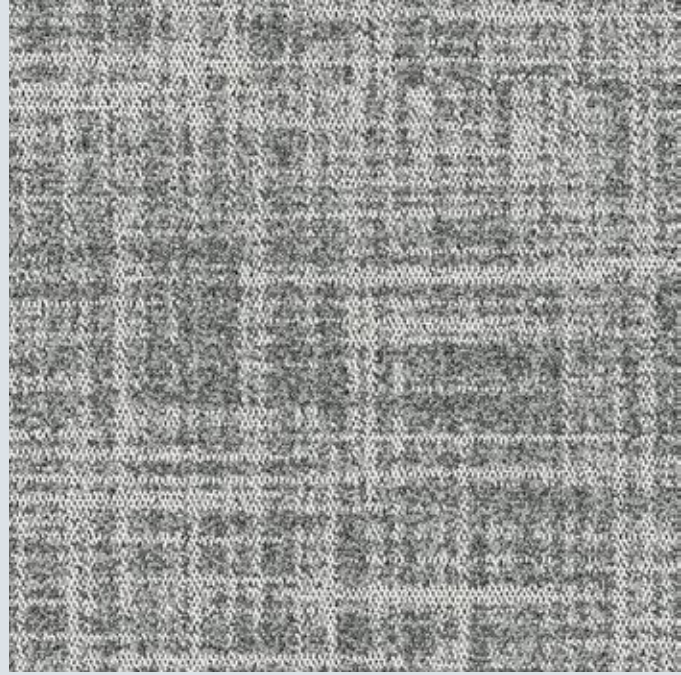


OF2241-511

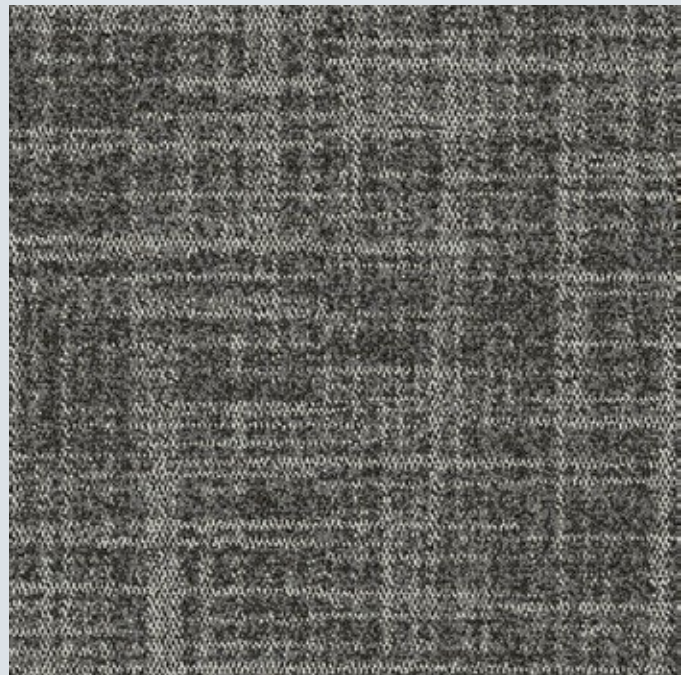


OF2241-509



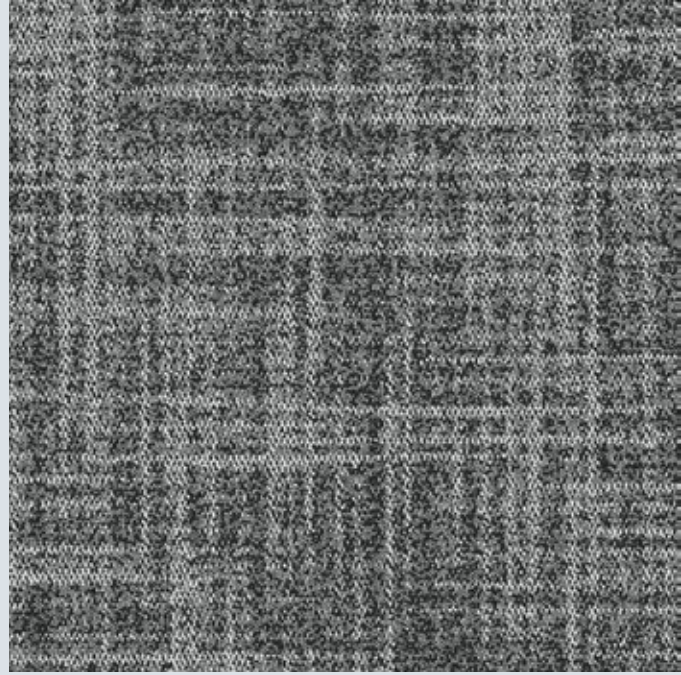


OF2241-805

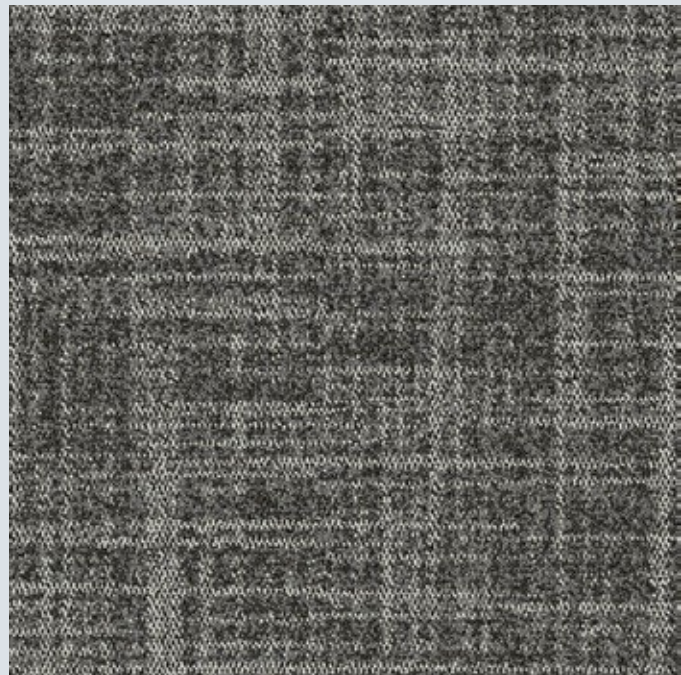


OF2241-701





OF2241-509

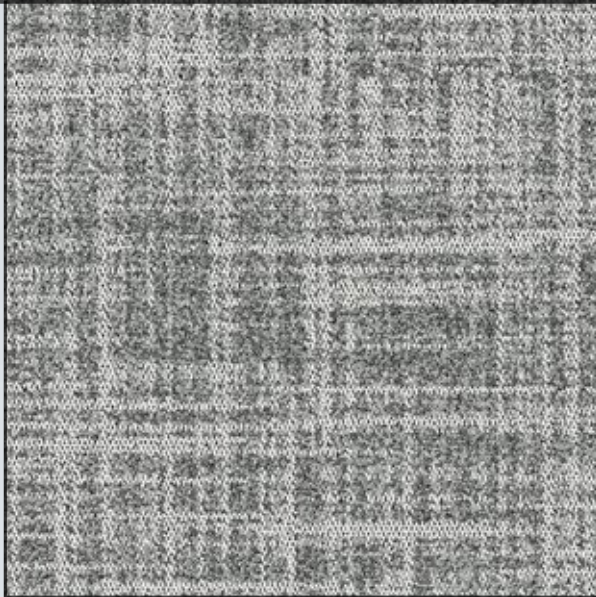


OF2241-701

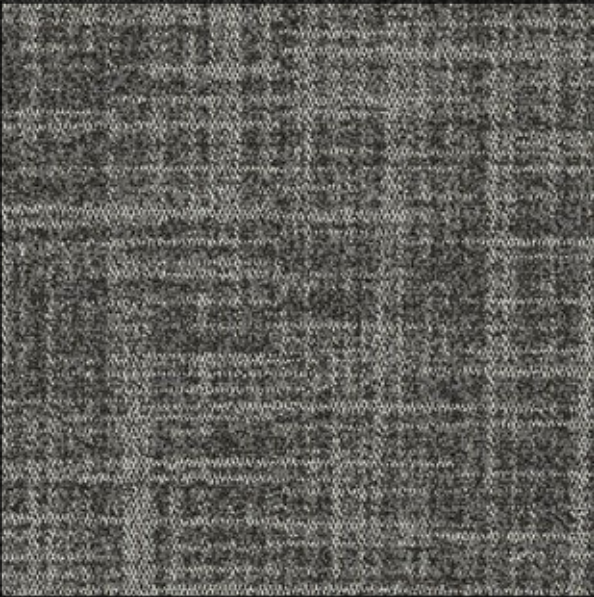


# COLORLINE

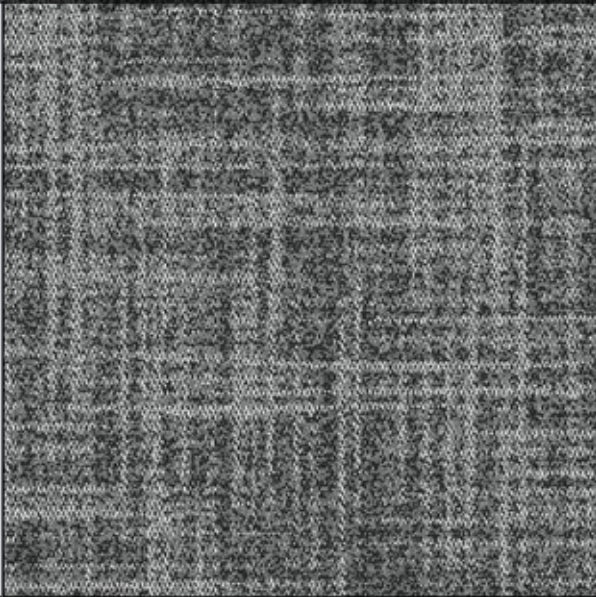
**CITYLINE**  
**GRID**



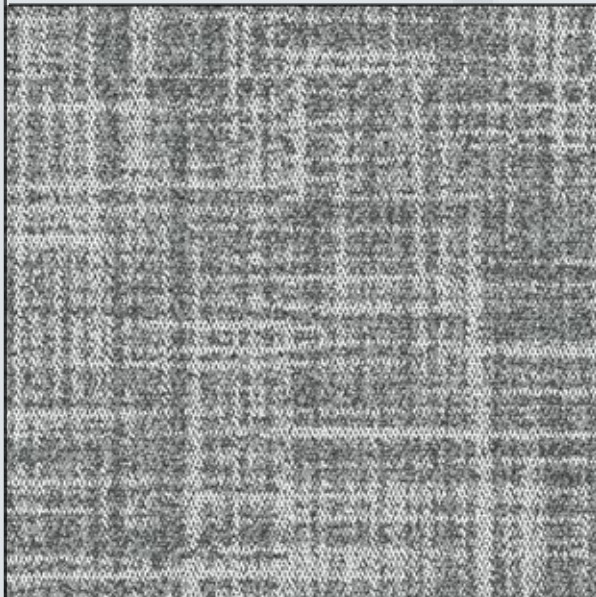
OF2241-805



OF2241-701



OF2241-509



OF2241-511



OF2241-510



OF2241-901

# CITYLINE GRID

tiles, Fliesen

## SPECIFICATION, SPEZIFIKATION

**Manufacturing process**, Herstellungsart

**Gauge**, Teilung

**Width**, Breite

**Surface**, Oberseitengestaltung

**Pile material**, Material der Polnutschicht

**Backing**, Rückenausrüstung

**Total weight**, Gesamtgewicht

**Total height**, Gesamtdicke

**Pile weight**, Poleinsatzgewicht

**tufted/loop pile**, getuftet/Schlinge

1/12"

ca. **19,69 x 19,69 inch**, ca. 50 x 50 cm

**loop pile**, Schlinge

100 % Polyamid SD

**UNIT**

ca. 3.240 g/m<sup>2</sup>

ca. 5.4 mm

ca. 510 g/m<sup>2</sup>



**SolutionDyed** – colourfast through and through

- spinneret-dyed already during yarn production
- outstanding cleaning properties
- resistant to UV radiation and yellowing
- environmentally friendly due to significant savings of fresh water, waste water, energy and CO<sub>2</sub>

SolutionDyed – farbecht durch und durch

- spinnzüsengefärbt bereits während der Garnherstellung
- herausragende Reinigungseigenschaften
- resistent gegen UV-Strahlung und Altersvergilbung
- umweltfreundlich durch deutliche Einsparung von Frischwasser, Abwasser, Energie und CO<sub>2</sub>



**UnitBack** – an odourless back coating with excellent laying and lying properties. Latex-, bitumen- and PVC-free and another component towards sustainable and recyclable products.

UnitBack – eine geruchsneutrale Rückenbeschichtung mit hervorragenden Verlege- und Liegeeigenschaften, Latex-, bitumen- sowie PVC-frei und ein weiterer Baustein hin zu nachhaltigen und recyclebaren Produkten mit optimal aufeinander abgestimmten Schichten.

### ANKER

Gebr. Schoeller GmbH + Co. KG  
Postfach 10 19 26 · D-52319 Düren  
T +49(0) 2421 804-0  
F +49(0) 2421 804-200

### Export

T +49(0) 2421 804-216  
F +49(0) 2421 804-309

anker@anker-dueren.de  
www.anker-carpets.com

*... and simply everywhere.*