

ANKER



Luminous

光梭

Luminous

光梭

在光与影的交错中,灵感悄然涌现。

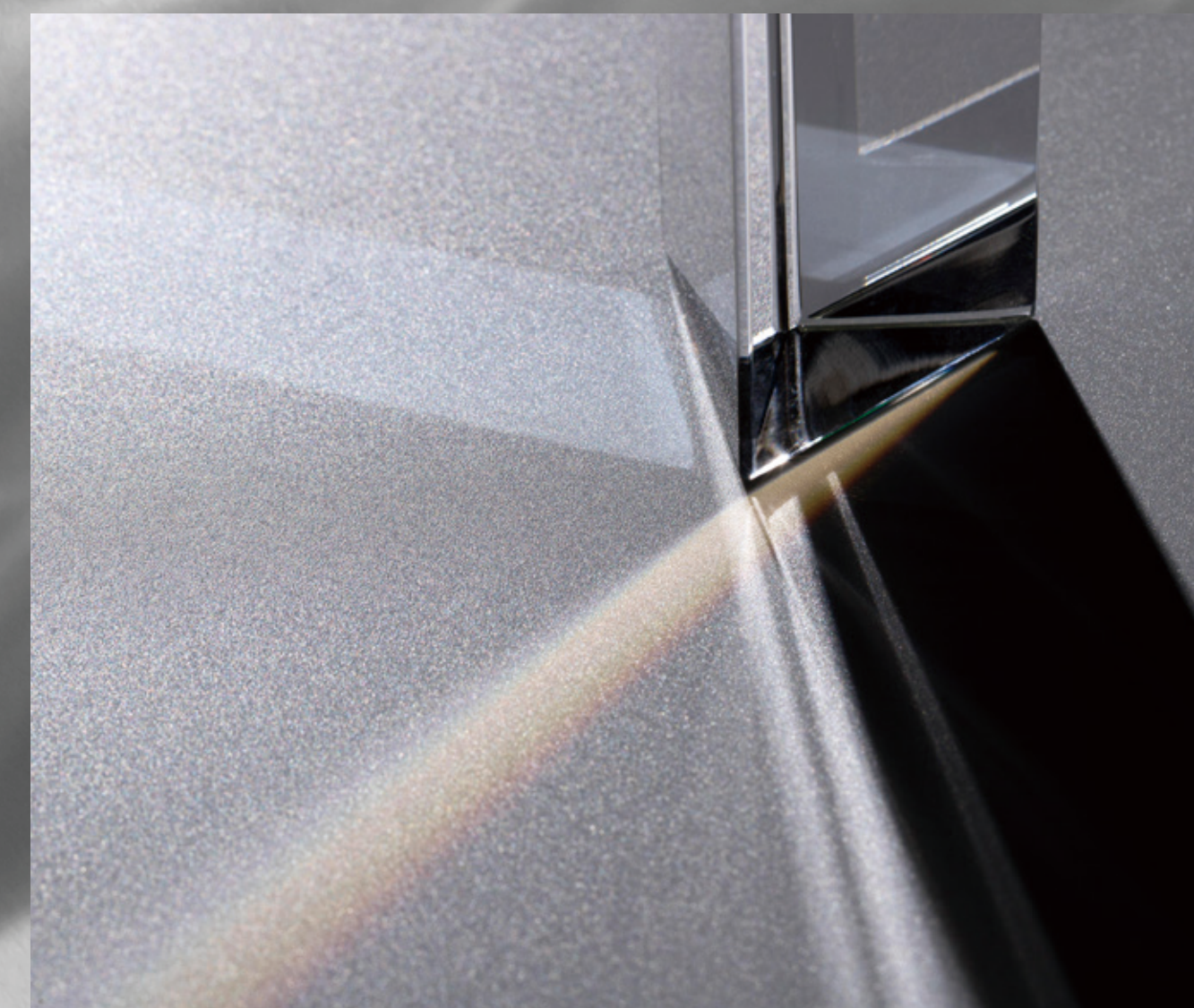
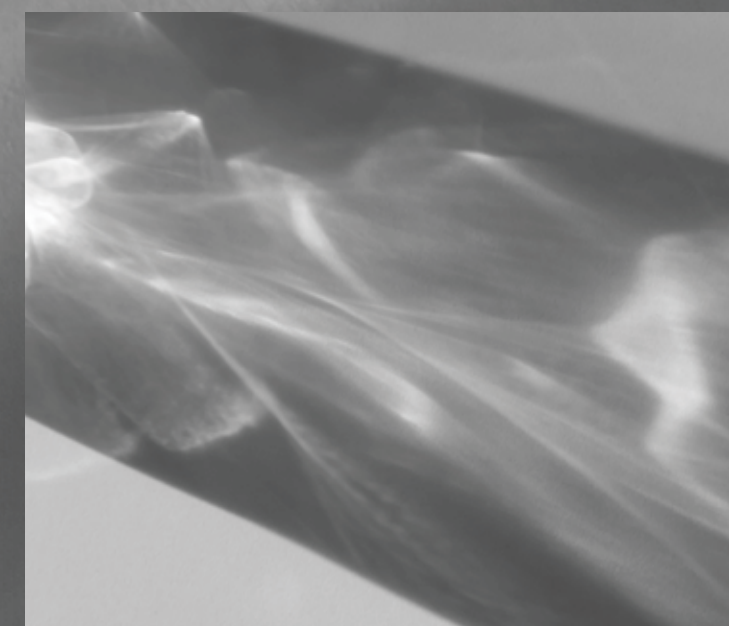
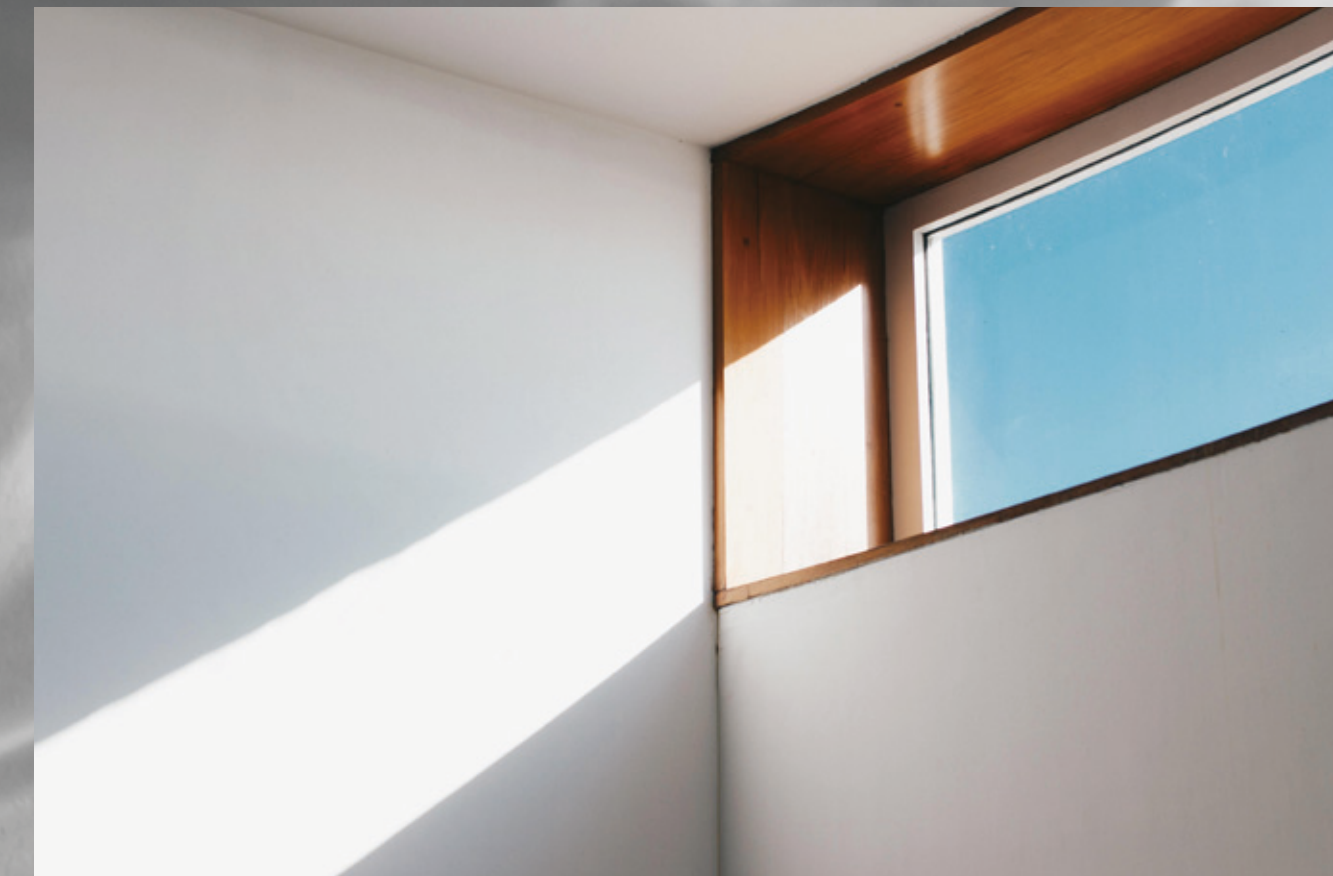
Luminous 光梭系列地毯, 在简约中展现光与影的交织。 细腻的渐变纹理仿佛捕捉了瞬间的光辉。

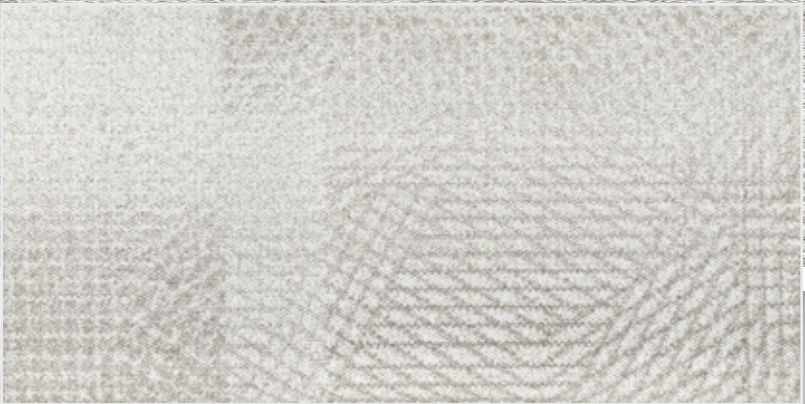
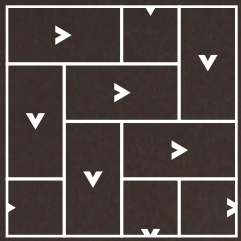
In the interplay of light and shadow, inspiration quietly emerges.

The Luminous series of square carpets reveals the fusion of light and shadow through simplicity. The delicate gradient textures seem to capture the fleeting brilliance of a moment.

Im Spiel von Licht und Schatten entsteht leise Inspiration.

Die Luminous- Serie von Quadrateppichen zeigt in ihrer Schlichtheit das Zusammenspiel von Licht und Schatten. Die feinen Übergangsmuster wirken, als würden sie den flüchtigen Glanz eines Moments einfangen.

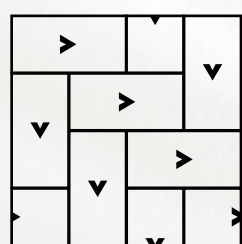


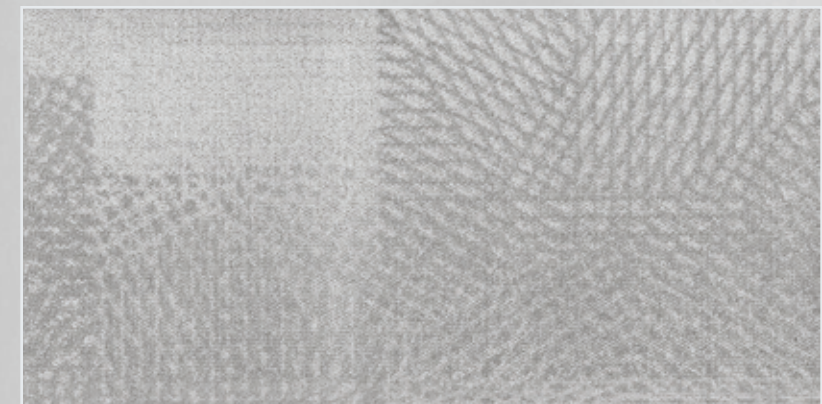
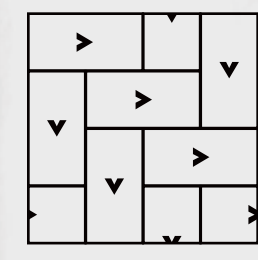


LUM-(01)601049

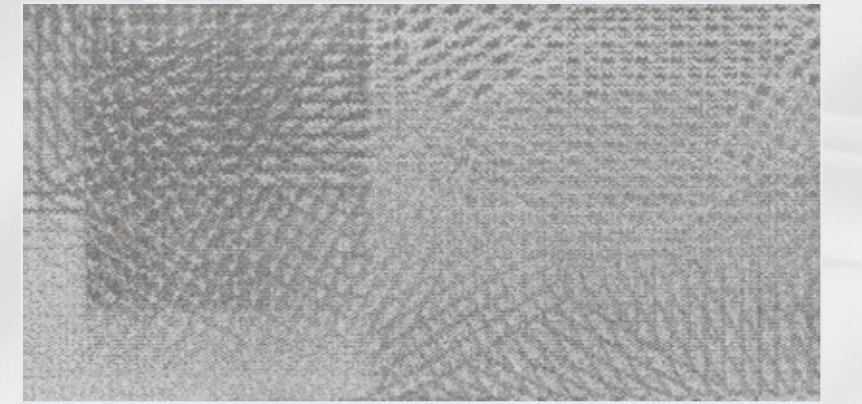


LUM-(02)601050

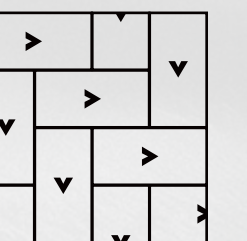


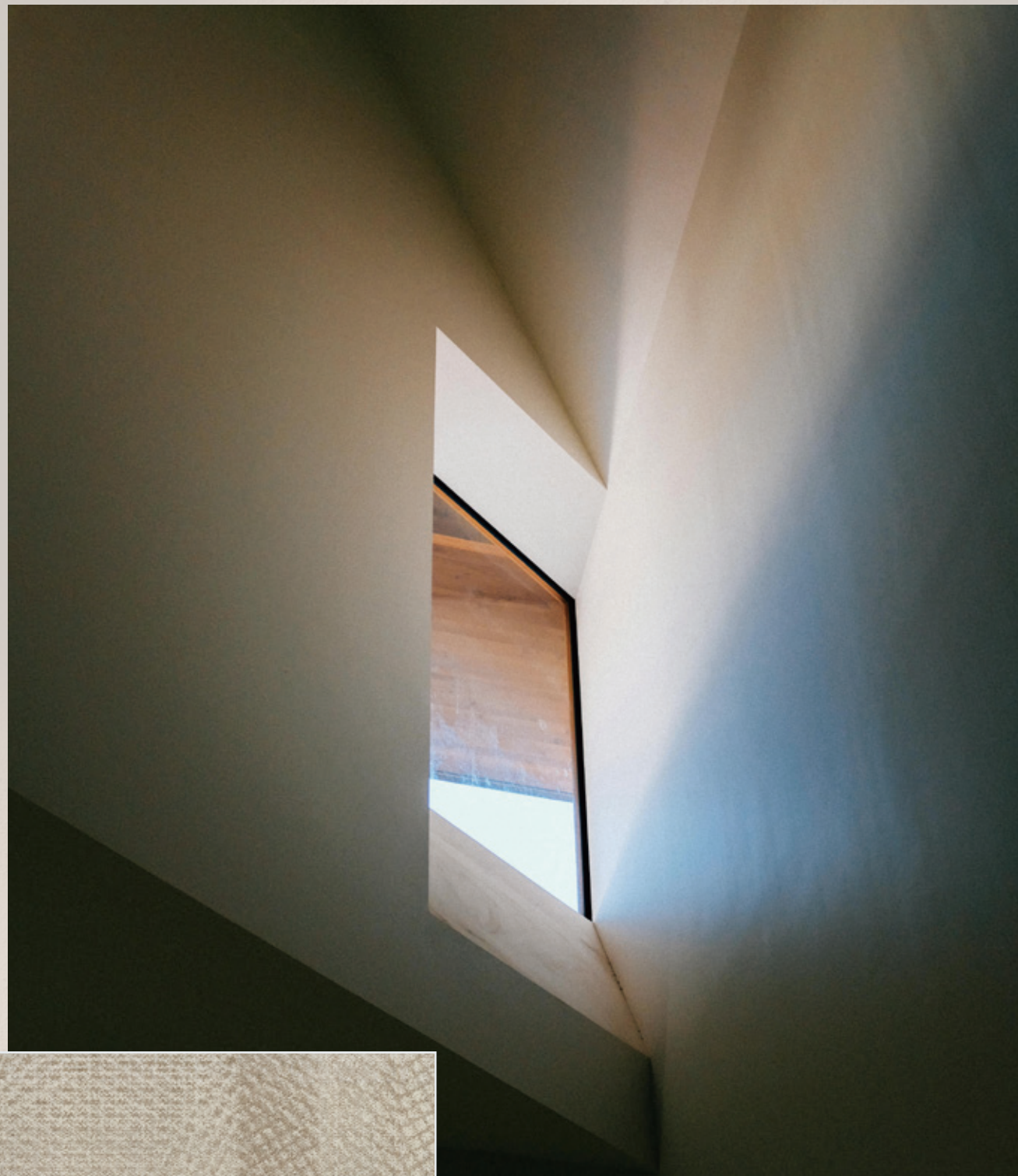
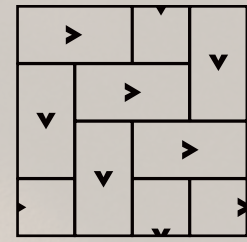


LUM-(03)601051



LUM-(04)601052



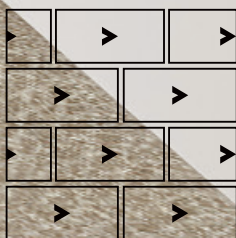


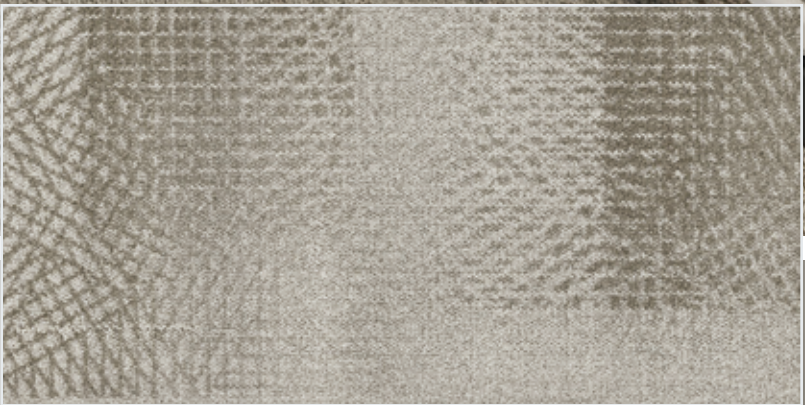
LUM-(05)601053



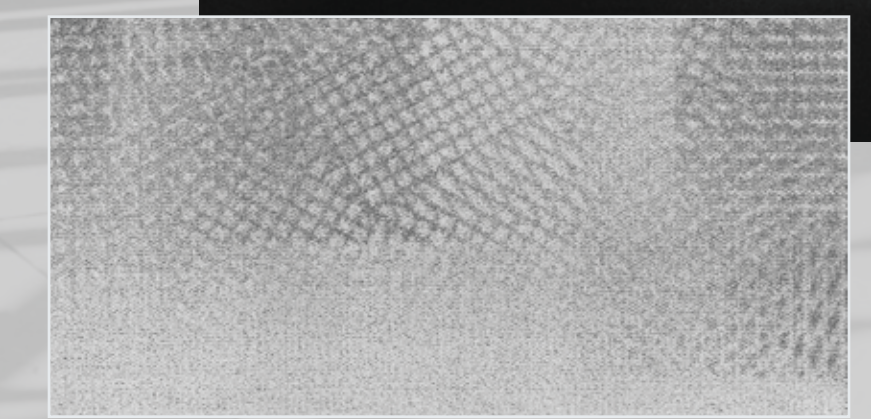
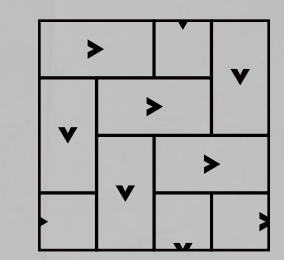


LUM-(05)601053

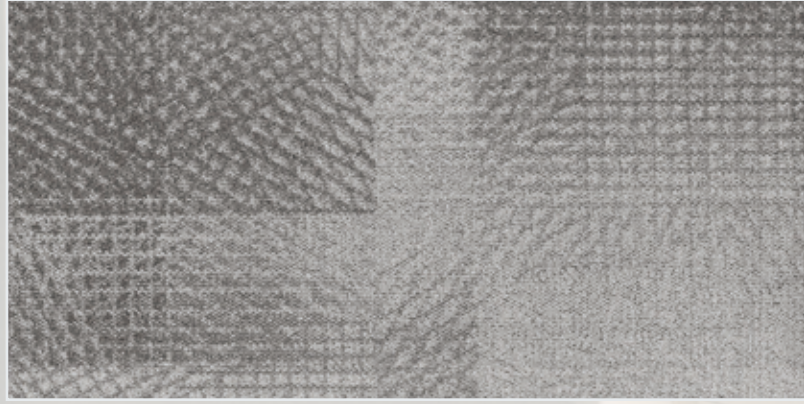




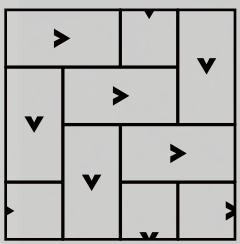
LUM-(06)601054

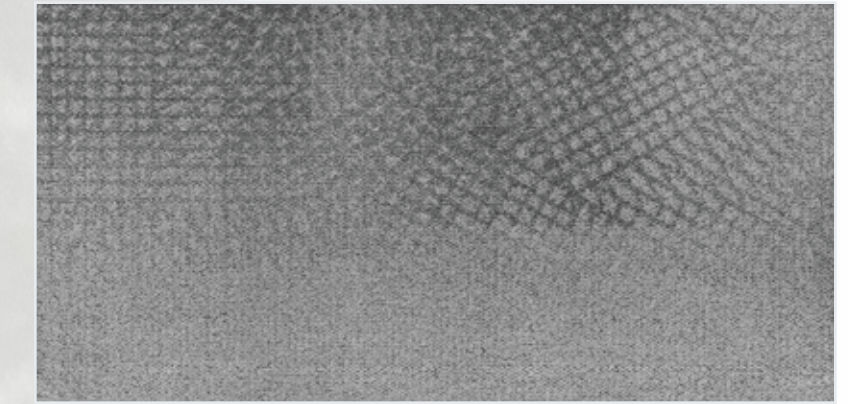


LUM-(07)601055

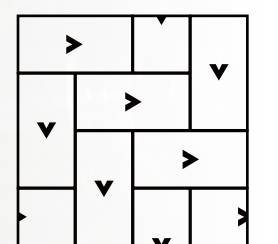


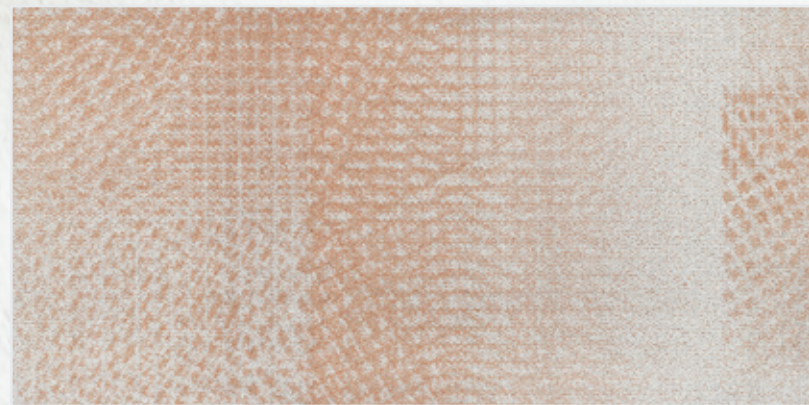
LUM-(08)601056



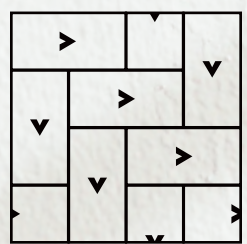


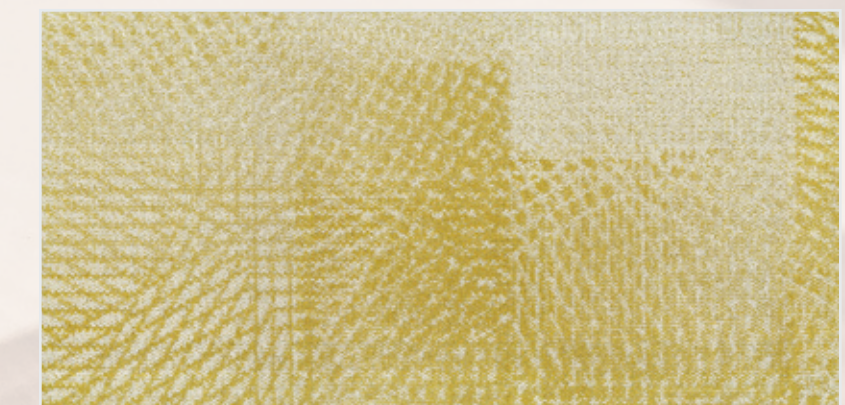
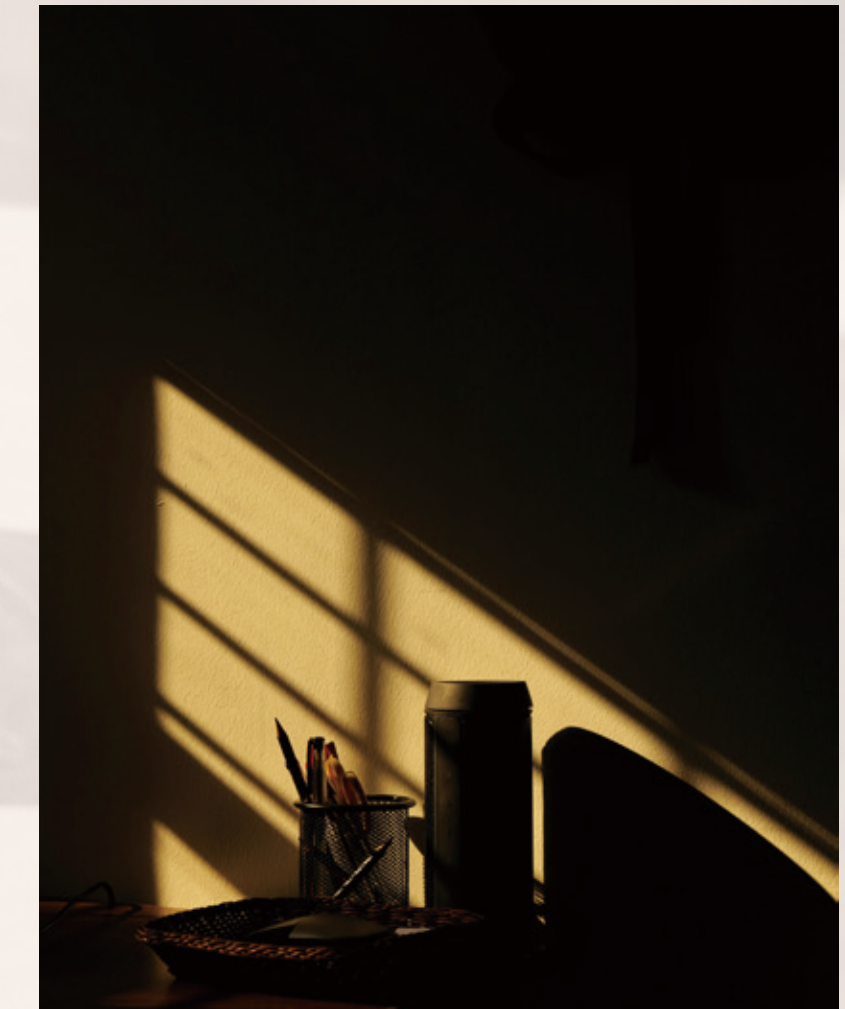
LUM-(09)601057



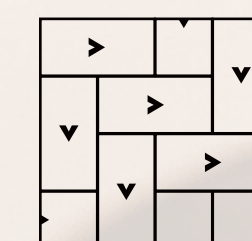


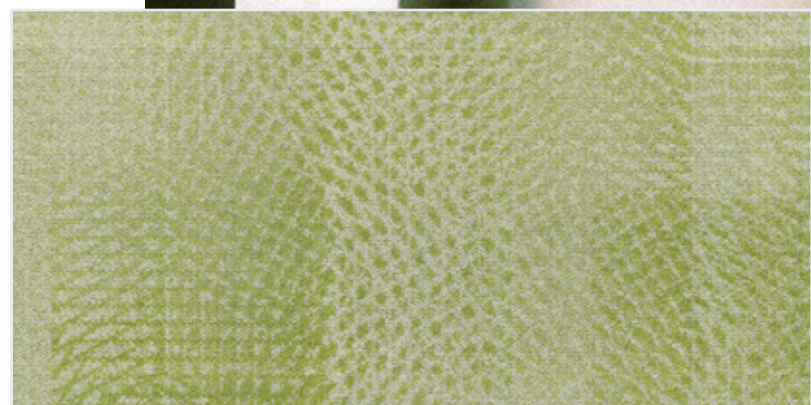
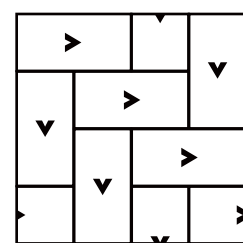
LUM-(10)601058





LUM-(11)601059



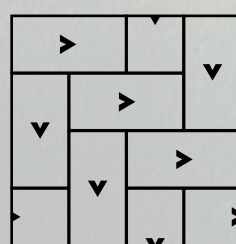


LUM-(12)601060



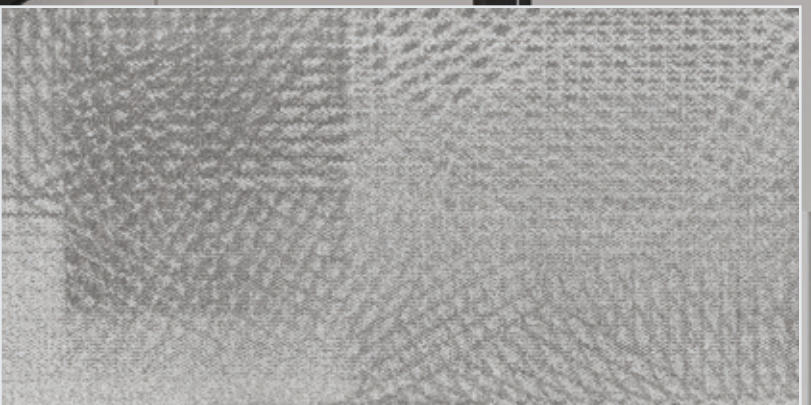


LUM-(13)601061

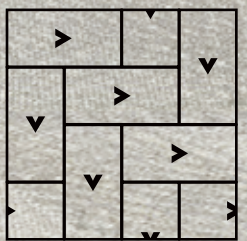


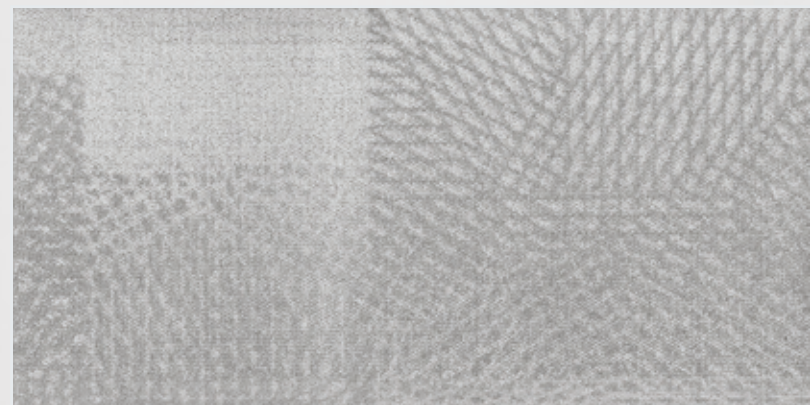


LUM-(02)601050

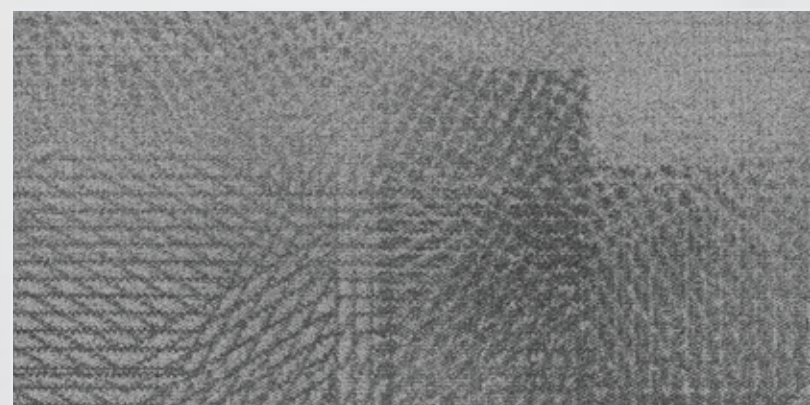


LUM-(04)601052

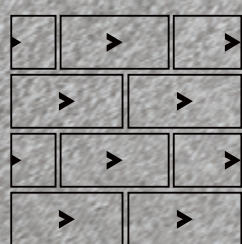




LUM-(03)601051

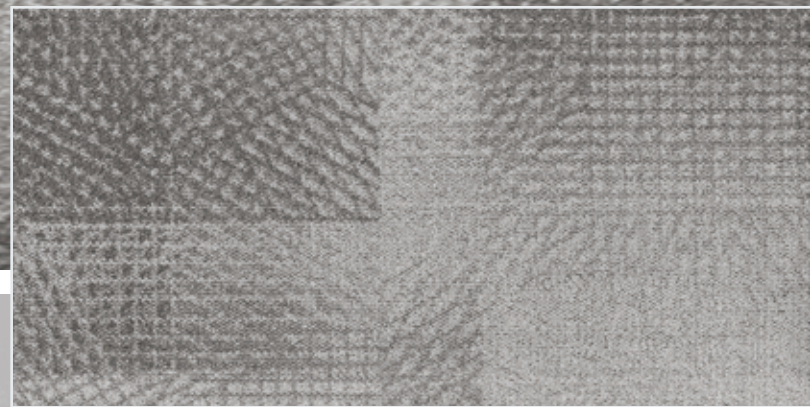


LUM-(09)601057

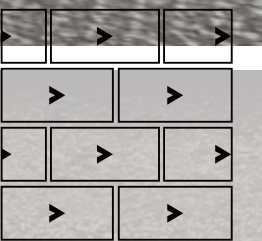


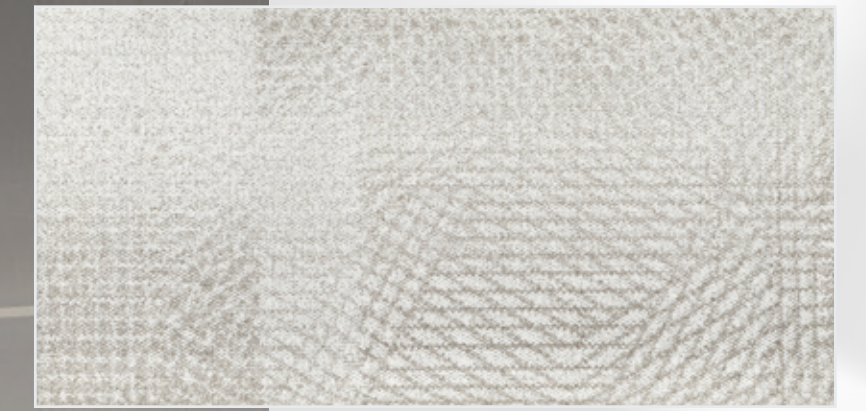


LUM-(05)601053

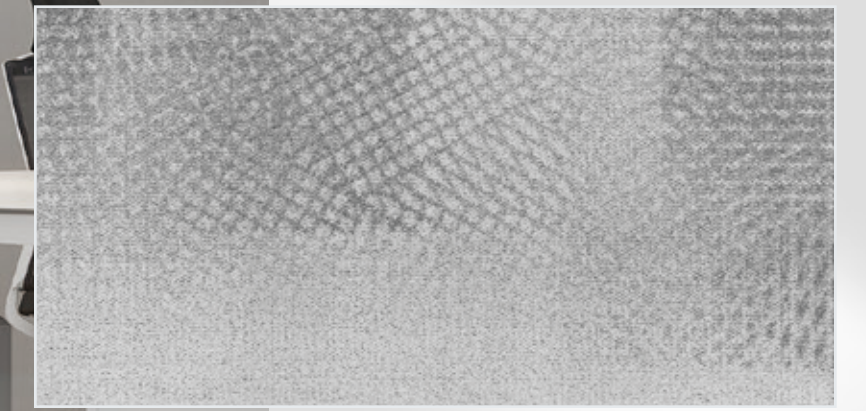


LUM-(08)601056

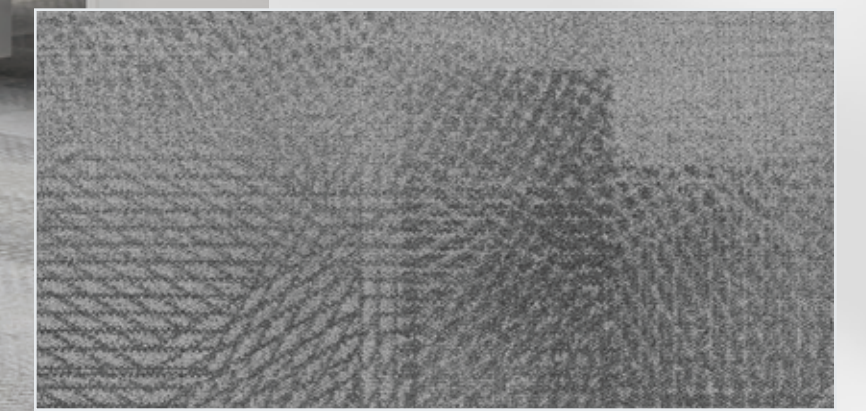




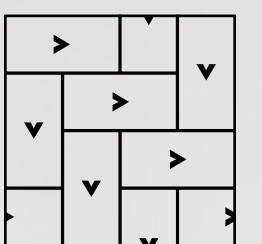
LUM-(01)601049



LUM-(07)601055

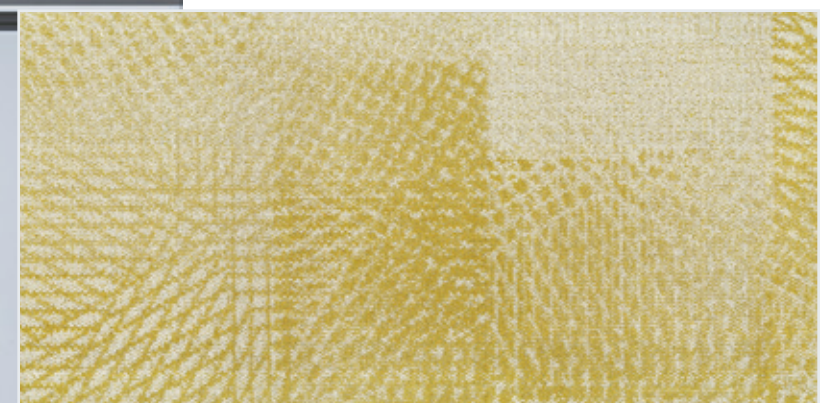


LUM-(09)601057

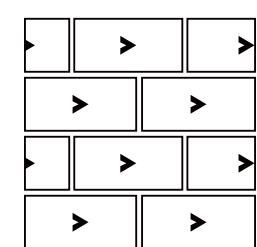


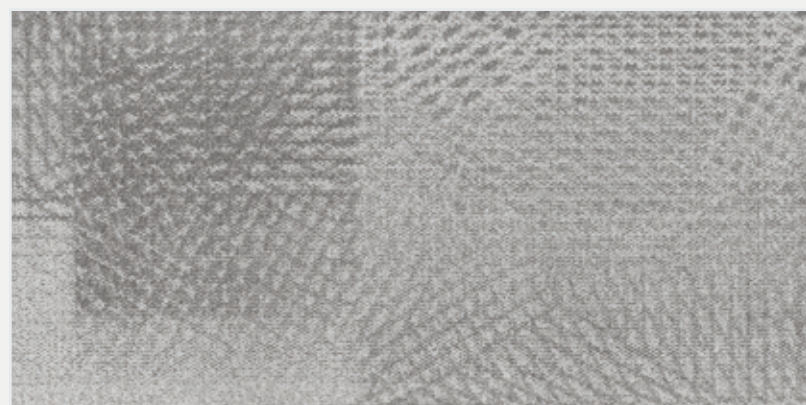


LUM-(05)601053



LUM-(11)601059

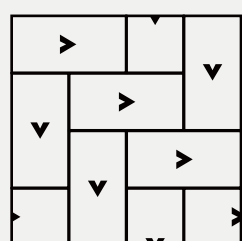




LUM-(04)601052



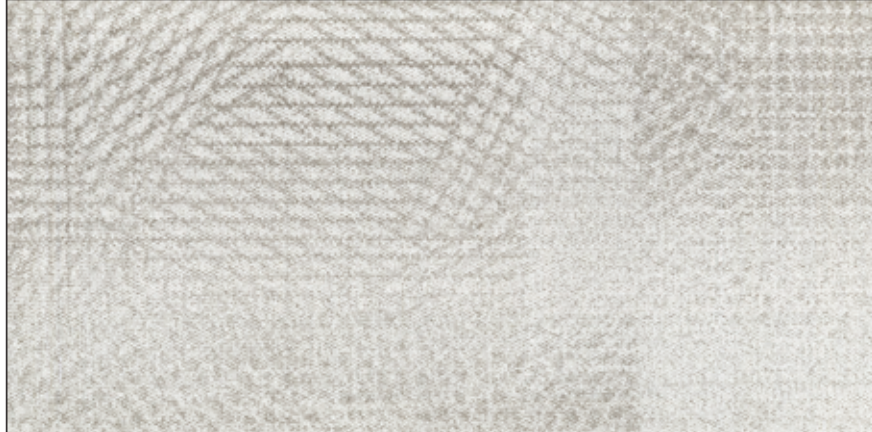
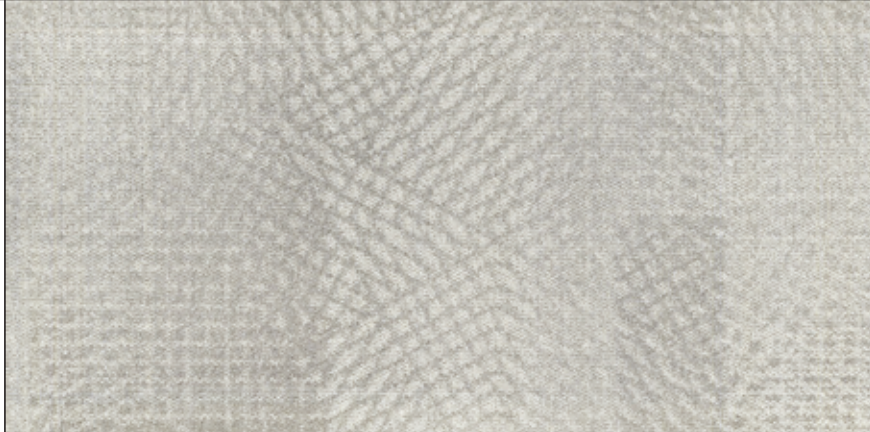
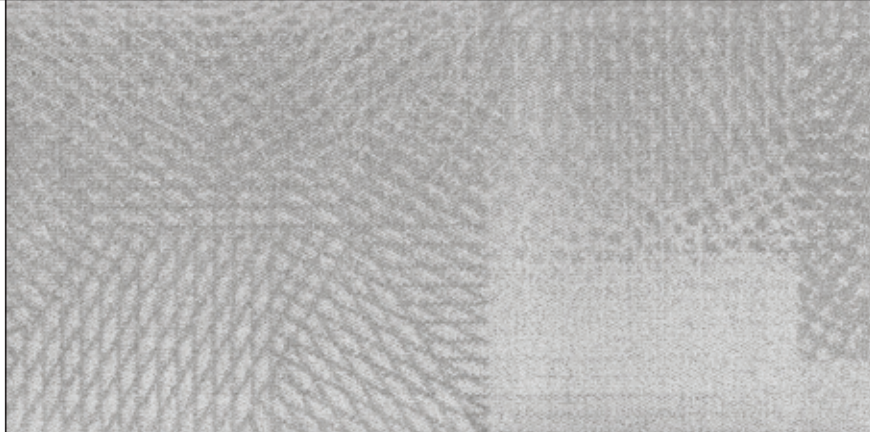
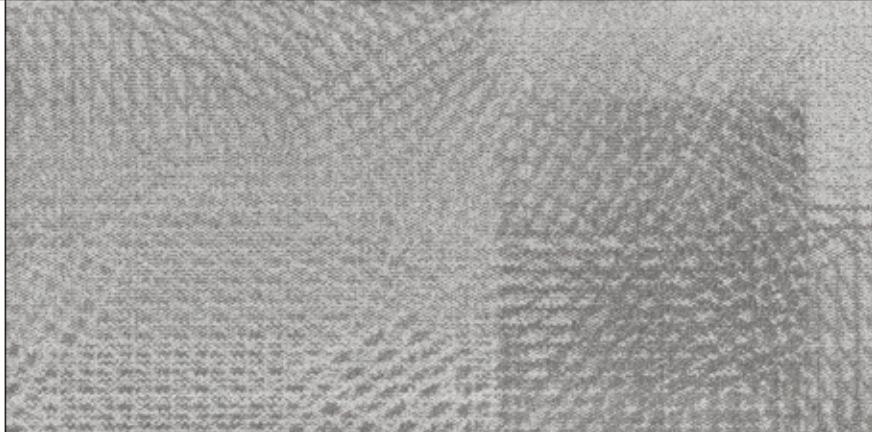
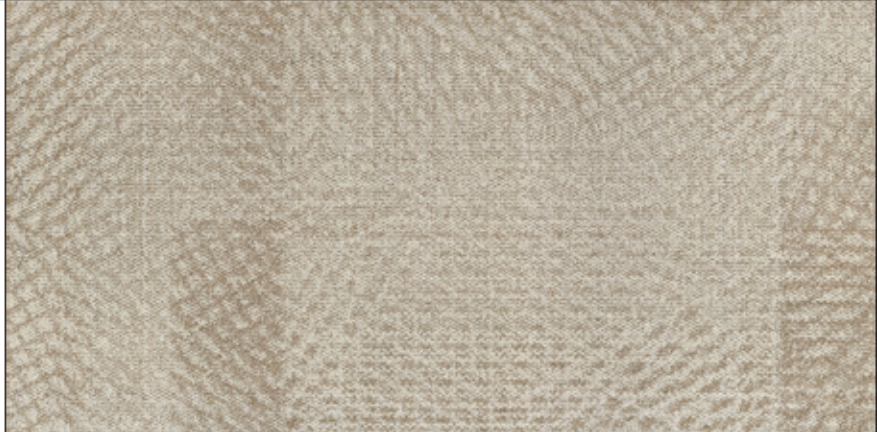

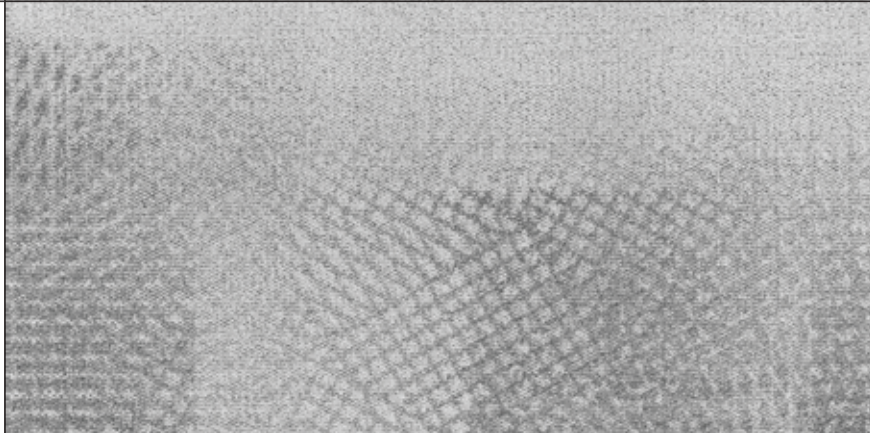
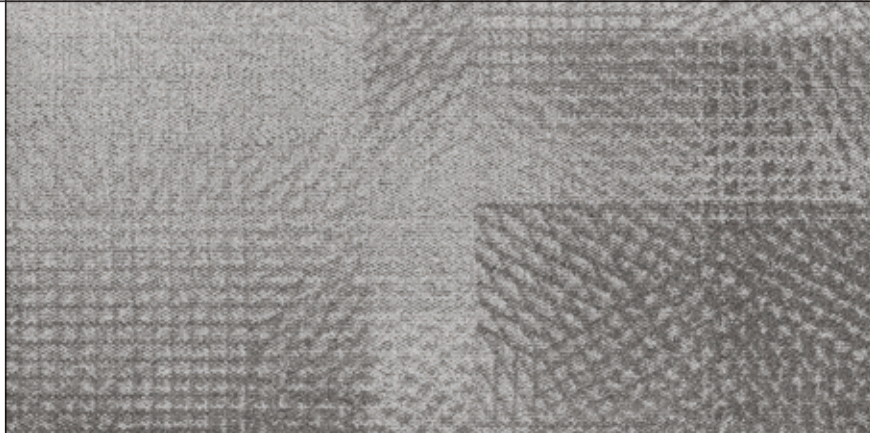
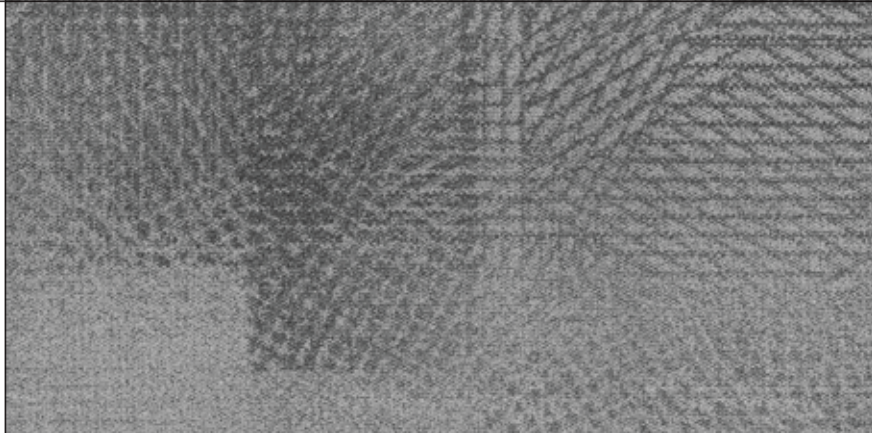
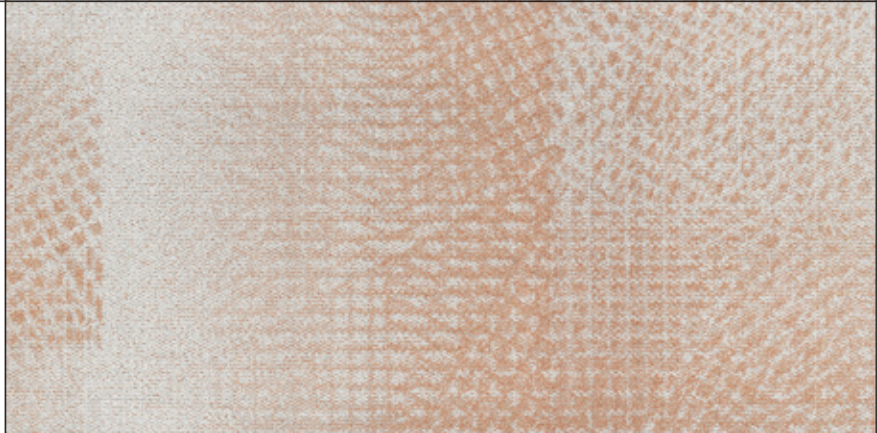
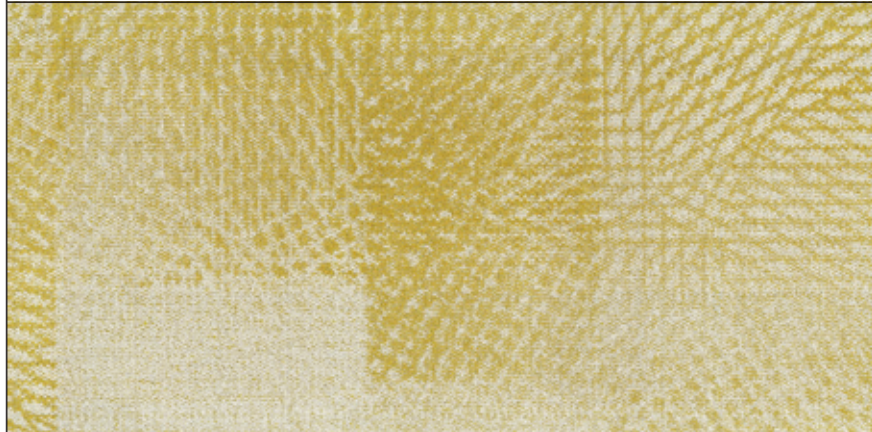
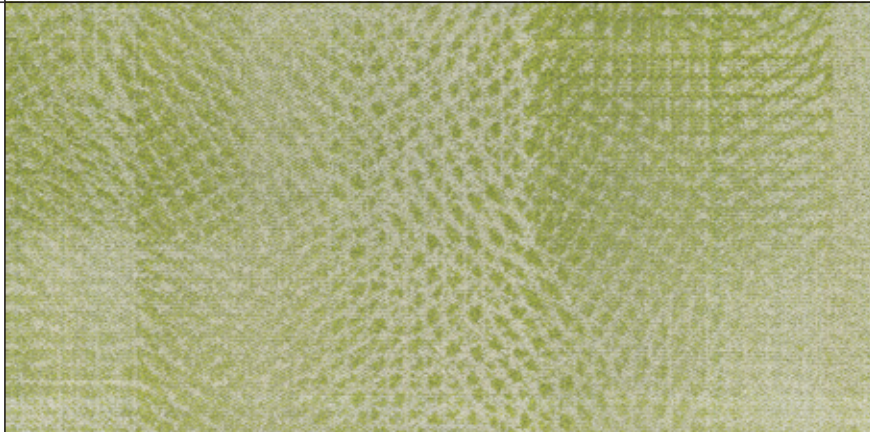
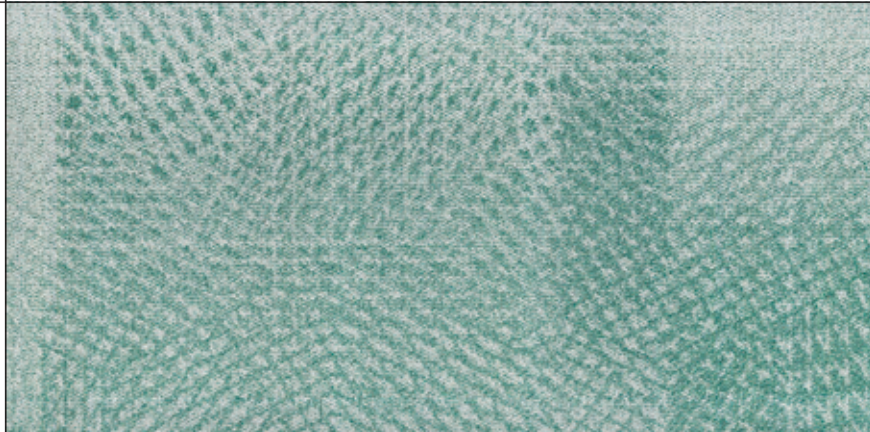
LUM-(12)601060



COLORLINE

Luminous

光梭

				
LUM-(01)601049	LUM-(02)601050	LUM-(03)601051	LUM-(04)601052	LUM-(05)601053
				
LUM-(06)601054	LUM-(07)601055	LUM-(08)601056	LUM-(09)601057	LUM-(10)601058
				
LUM-(11)601059	LUM-(12)601060	LUM-(13)601061		



LUM-(01)601049

光梭 *Luminous*

SPECIFICATION

Construction: Tufting High Low Loop
Tile Size: 50 cm × 100 cm
Backing: Unit Back® (PVC Free)
Unit Back Pro® (PVC Free)
Face Fiber: 100% Universal Stain Resist Nylon
Gauge: 1/12
Pile Weight: 20 oz/yd²
Pile Height: 5±0.5mm
Total Height: 6±0.5mm
8±0.5mm
Wear Classification: 33-LC1
(German Heavy Commercial Use Standard)
Burning Classification: DIN EN 13501-1 Cfl-s1
GB 8624-2012 B1(B)
Environmental Properties: GUT TVOC≤100µg/m³

Produktspezifikation

Teppichkonstruktion: getuftet/hoch tief Schlinge
Breite: 19,69 inch × 39,37 inch
Rückenausrüstung: Unit Back® (PVC Free)
Unit Back Pro® (PVC Free)
Material der Polnutzschicht: 100% Universal Stain Resist Nylon
Teilung: 1/12"
Poleinsatzgewicht: 20 oz/yd²
Polschichtdicke: ca. 5±0.5mm
Gesamtdicke: ca. 6±0.5mm
ca. 8±0.5mm
Verwendungsbereich: 33-LC1
(Deutscher Standard für starke gewerbliche Nutzung)
Burning Classification: DIN EN 13501-1 Cfl-s1
GB 8624-2012 B1(B)
Brandverhalten: GUT TVOC≤100µg/m³

技术参数

结构: 簇绒高低圈
产品尺寸: 50 cm × 100 cm
标准底背: Unit Back® PE 环保底背 (不含 PVC)
Unit Back Pro® PE 环保舒适软底背 (不含 PVC)
标准纤维: 100% 环球抗污尼龙
针距: 1/12
绒重: 20 oz/yd²
绒高: 5±0.5mm
额定总厚度: 6±0.5mm
8±0.5mm
耐磨等级: 33-LC1
(符合德国重度商业使用标准)
阻燃性: DIN EN 13501-1 Cfl-s1
GB 8624-2012 B1(B)
环保性: GUT TVOC≤100µg/m³

We reserve the right to make technical changes while maintaining the service properties of the carpet.
The goods delivered may have a slight deviation in colour from the colour samples.

Wir behalten uns technische Änderungen des Produktes unter Beibehaltung der Gebrauchseigenschaften vor.

我们保留在保持地毯使用性能的前提下进行技术改动的权利; 请以最终交付的实物为准。



(WEB QR CODE)



(PRODUCT QR CODE)

ANKER
ankerflooring.com
Gebr. Schoeller GmbH + Co. KG
Zollhausstraße 112
52353 Düren, Germany

Telefon+49(0)2421 804-0
Fax+49(0)2421 804-200
anker@anker-dueren.cn

Asia Pacific (亚太地区):
anker@anker-dueren.cn
+86 199 2107 9267