



C O A S T L I N E

LANDSCAPE / LANDSCAPE TRANSITION / SEASCAPE / SEASCAPE TRANSITION

Milliken™

COASTLINE



Where the land meets the sea to offer a natural boundary and beautiful breathing space. An area of rugged resilience and uncompromising beauty. Remote depths of maritime colour and rich, rippling textures appear as the rugged shoreline meets the splendour of the coastal cliffs and a new journey begins.



CONTENTS

[DESIGNS](#)

[ROOM SCENE](#)

[COLORS](#)

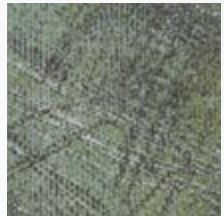
[TECHNICAL DATA](#)

[M/PACT](#)

[VISUALISE ONLINE](#)

[CONTACT DETAILS](#)





LND203-202
COOL SEAGRASS



LNT203-202/153-118
COOL SEAGRASS
/ROCKPOOL



LND153-118
ROCKPOOL



(From left to right) Landscape in Cool Seagrass,
Landscape Transition in Cool Seagrass/ Rockpool,
Landscape in Rockpool, monolithic installation





LND153-118
ROCKPOOL

Landscape in Rockpool, monolithic installation





Landscape in Pampas Grass, monolithic installation





SEA154-153
ROCKPOOL



Seascape in Rockpool, monolithic installation





SEA189-109
WARM POPPY

SET153-207/189-109
HARBOR/WARM RPOPPY



Seascape in Warm Poppy, Seascape Transition in Harbor/Warm Poppy, monolithic installation

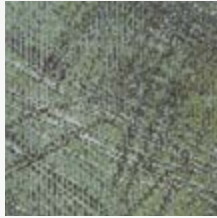




SEA153-144
PAMPAS GRASS

Seascape in Pampas Grass, monolithic installation





LND203-202
COOL SEAGRASS



LNT153-118/203-202
ROCKPOOL
/COOL SEAGRASS



LND153-118
ROCKPOOL



LNT6-188/153-118
COOL YELLOW PEBBLE
/ROCKPOOL

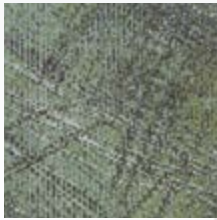


LND6-188
COOL YELLOW PEBBLE



(From left to right)Landscape in Cool Yellow Pebble,
Landscape Transition in Cool Yellow Pebble/Rockpool,
Landscape in Rockpool, Landscape Transition in Rockpool/Cool Seagrass,
monolithic installation





LND203-202
COOL SEAGRASS



LNT153-118/203-202
ROCKPOOL
/COOL SEAGRASS



LND153-118
ROCKPOOL



SET120-230/154-153
COOL GREEN REEF
/ROCKPOOL



SEA120-230
COOL GREEN REEF



(From front to back) Landscape in Cool Seagrass, Landscape Transition in Rockpool/Cool Seagrass, Landscape in Rockpool, Seascape Transition in Rockpool/Cool Green Reef, Seascape in Cool Green Reef, monolithic installation





LNT171-139/153-207
WARM SALT/HARBOR



LNT153-207/171-139
HARBOR/WARM SALT





(From left to right) Landscape in Warm Seagrass, Landscape Transition in Warm Seagrass/Harbor, Landscape in Harbor, Landscape Transition in Harbor/Warm Scallop, Landscape in Warm Scallop, monolithic installation





(From left to right) Seascape in Rockpool, Seascape Transition in Rockpool/Cool Wave, Landscape in Rockpool, Landscape Transition in Cool Wave/Rockpool, Landscape in Rockpool/Cool Green Reef, monolithic installation





					
SEA120-261 WARM SCALLOP	SET120-261/153-207 WARM SCALLOP /HARBOR	SEA153-207 HARBOR <i>*Standard</i>	SET153-207/218-188 HARBOR /WARM YELLOW PEBBLE	SEA218-188 WARM YELLOW PEBBLE	LND218-188 WARM YELLOW PEBBLE

(From left to right) Seascape in Warm Scallop, Seascape Transition in Warm Scallop/Harbor, Seascape in Harbor, Seascape Transition in Harbor/Warm Yellow Pebble, Seascape in Warm Yellow Pebble, Landscape in Warm Yellow Pebble, monolithic installation



LANDSCAPE | COOL TONES

There are 4 cool neutrals available for transitioning into 10 cool casted accents.



LND153-118
ROCKPOOL
**Standard*

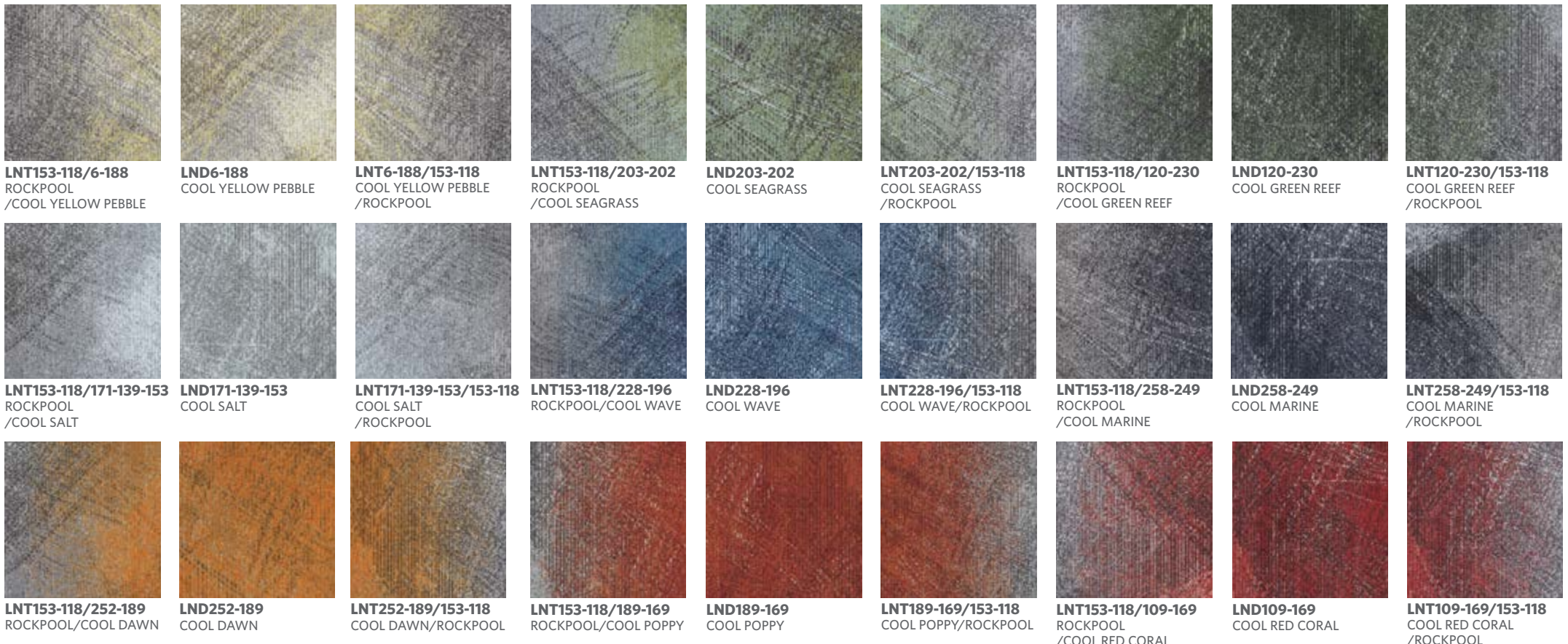
LND153-144
PAMPAS GRASS

LND118-153
LIGHTHOUSE

LND215-119
SEABED

COOL TRANSITIONS

Left and right transition tiles complete the design. All patterns can be used together or separately depending on the floor layout.



LNT153-118/6-188
ROCKPOOL /COOL YELLOW PEBBLE

LND6-188
COOL YELLOW PEBBLE

LNT6-188/153-118
COOL YELLOW PEBBLE /ROCKPOOL

LNT153-118/203-202
ROCKPOOL /COOL SEAGRASS

LND203-202
COOL SEAGRASS

LNT203-202/153-118
COOL SEAGRASS /ROCKPOOL

LNT153-118/120-230
ROCKPOOL /COOL GREEN REEF

LND120-230
COOL GREEN REEF

LNT120-230/153-118
COOL GREEN REEF /ROCKPOOL

LNT153-118/171-139-153
ROCKPOOL /COOL SALT

LND171-139-153
COOL SALT

LNT171-139-153/153-118
COOL SALT /ROCKPOOL

LNT153-118/228-196
ROCKPOOL/COOL WAVE

LND228-196
COOL WAVE

LNT228-196/153-118
COOL WAVE/ROCKPOOL

LNT153-118/258-249
ROCKPOOL /COOL MARINE

LND258-249
COOL MARINE

LNT258-249/153-118
COOL MARINE /ROCKPOOL

LNT153-118/252-189
ROCKPOOL/COOL DAWN

LND252-189
COOL DAWN

LNT252-189/153-118
COOL DAWN/ROCKPOOL

LNT153-118/189-169
ROCKPOOL/COOL POPPY

LND189-169
COOL POPPY

LNT189-169/153-118
COOL POPPY/ROCKPOOL

LNT153-118/109-169
ROCKPOOL /COOL RED CORAL

LND109-169
COOL RED CORAL

LNT109-169/153-118
COOL RED CORAL /ROCKPOOL



(From left to right) Landscape in Cool Seagrass, Landscape Transition in Cool Seagrass/ Rockpool, Landscape in Rockpool, monolithic installation



LANDSCAPE | WARM TONES

There are 6 warm neutrals available for transitioning into 10 warm casted accents.



LND153-207
HARBOR
*Standard



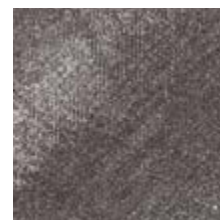
LND6-209
CAP



LND254-15
SANDBAR



LND59-124
DUNE



LND79-120
SHORELINE



LND133-118-13
GREY SEAL

WARM TRANSITIONS

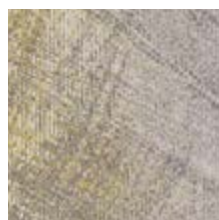
Left and right transition tiles complete the design. All patterns can be used together or separately depending on the floor layout.



LNT153-207/218-188
HARBOR
/WARM YELLOW PEBBLE



LND218-188
WARM YELLOW PEBBLE



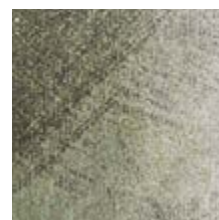
LNT218-188/153-207
WARM YELLOW PEBBLE
/HARBOR



LNT153-207/202-203
HARBOR
/WARM SEAGRASS



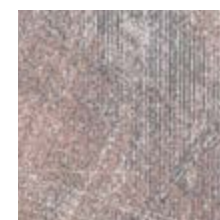
LND202-203
WARM SEAGRASS



LNT202-203/153-207
WARM SEAGRASS
/HARBOR



LNT153-207/120-261
HARBOR
/WARM SCALLOP



LND120-261
WARM SCALLOP



LNT120-261/153-207
WARM SCALLOP
/HARBOR



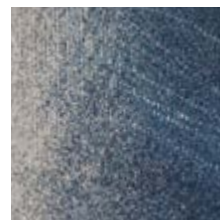
LNT153-207/171-139
HARBOR/WARM SALT



LND171-139
WARM SALT



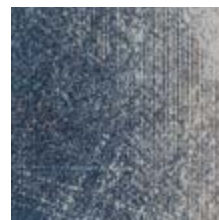
LNT171-139/153-207
WARM SALT/HARBOR



LNT153-207/196-228
HARBOR/WARM WAVE



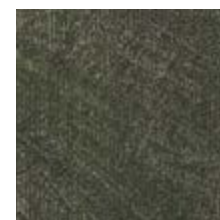
LND196-228
WARM WAVE



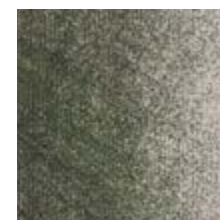
LNT196-228/153-207
WARM WAVE/HARBOR



LNT153-207/13-203
HARBOR
/WARM GREEN REEF



LND13-203
WARM GREEN REEF



LNT13-203/153-207
WARM GREEN REEF
/HARBOR



LNT153-207/189-252
HARBOR/WARM DAWN



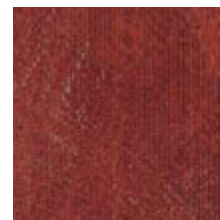
LND189-252
WARM DAWN



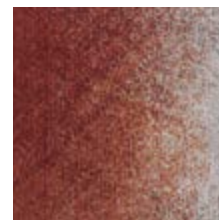
LNT189-252/153-207
WARM DAWN/HARBOR



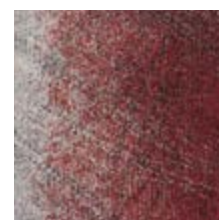
LNT153-207/189-109
HARBOR/WARM POPPY



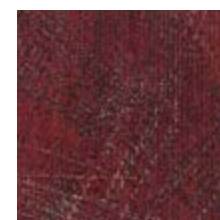
LND189-109
WARM POPPY



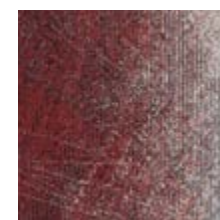
LNT189-109/153-207
WARM POPPY/HARBOR



LNT153-207/169-109
HARBOR
/WARM RED CORAL



LND169-109
WARM RED CORAL



LNT169-109/153-207
WARM RED CORAL
/HARBOR

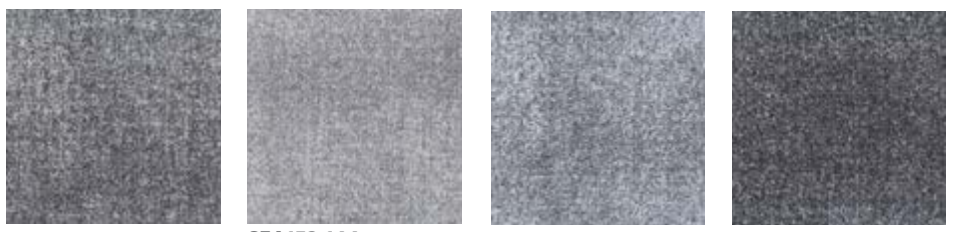


(From left to right) Landscape in Warm Seagrass, Landscape Transition in Warm Seagrass/ Harbor, Landscape in Harbor, monolithic installation



SEASCAPE | COOL TONES

There are 4 cool neutrals available for transitioning into 10 cool casted accents.



SEA154-153
ROCKPOOL
**Standard*

SEA153-144
PAMPAS GRASS

SEA215-153
LIGHTHOUSE

SEA215-119
SEABED

COOL TRANSITIONS

Left and right transition tiles complete the design. All patterns can be used together or separately depending on the floor layout.



SET154-153/6-188
ROCKPOOL /COOL YELLOW PEBBLE

SEA6-188
COOL YELLOW PEBBLE

SET6-188/154-153
COOL YELLOW PEBBLE /ROCKPOOL

SET154-153/203-202
ROCKPOOL /COOL SEAGRASS

SEA203-202
COOL SEAGRASS

SET203-202/154-153
COOL SEAGRASS /ROCKPOOL

SET154-153/120-230
ROCKPOOL /COOL GREEN REEF

SEA120-230
COOL GREEN REEF

SET120-230/154-153
COOL GREEN REEF /ROCKPOOL

SET154-153/139-171
ROCKPOOL /COOL SALT

SEA139-171
COOL SALT

SET139-171/154-153
COOL SALT /ROCKPOOL

SET154-153/228-196
ROCKPOOL/COOL WAVE

SEA228-196
COOL WAVE

SET228-196/154-153
COOL WAVE/ROCKPOOL

SET154-153/258-249
ROCKPOOL /COOL MARINE

SEA258-249
COOL MARINE

SET258-249/154-153
COOL MARINE /ROCKPOOL

SET154-153/252-189
ROCKPOOL/COOL DAWN

SEA252-189
COOL DAWN

SET252-189/154-153
COOL DAWN/ROCKPOOL

SET154-153/189-169
ROCKPOOL/COOL POPPY

SEA189-169
COOL POPPY

SET189-169/154-153
COOL POPPY/ROCKPOOL

SET154-153/109-169
ROCKPOOL /COOL RED CORAL

SEA109-169
COOL RED CORAL

SET109-169/154-153
COOL RED CORAL /ROCKPOOL



SET154-153/153-261
ROCKPOOL /COOL SCALLOP

SEA153-261
COOL SCALLOP

SET153-261/154-153
COOL SCALLOP /ROCKPOOL

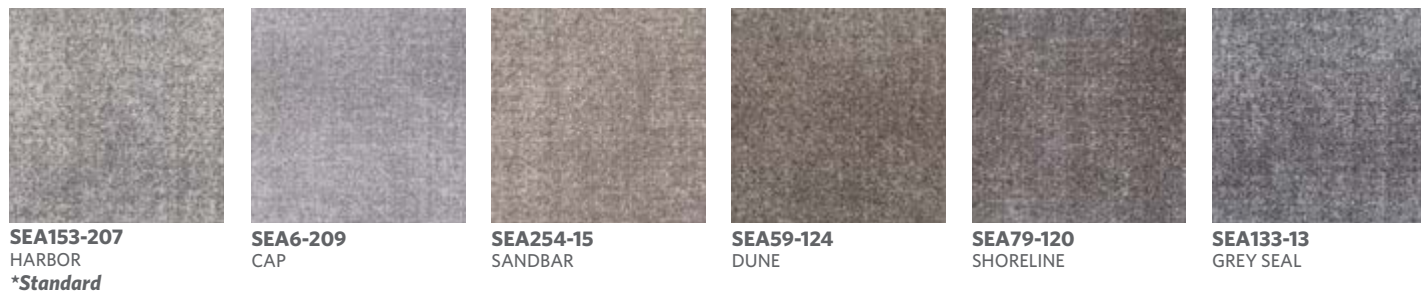


(From left to right) Seascape in Cool Wave, Seascape Transition in Cool Wave/ Rockpool, Seascape in Rockpool, monolithic installation



SEASCAPE | WARM TONES

There are 6 warm neutrals available for transitioning into 10 warm casted accents.



WARM TRANSITIONS

Left and right transition tiles complete the design. All patterns can be used together or separately depending on the floor layout.



(From left to right) Seascape in Harbor, Seascape Transition in Warm Yellow Pebble/ Harbor, Seascape in Warm Yellow Pebble, monolithic installation





Coastline

SPECIFICATION

Construction - Tufted, Textured Loop

Tile Size - 50cm X 50cm

Face Fiber - 100% Milliken Certified Nylon

Dye Method - Millitron®

Standard Backing - PVC-Free WellBAC™ Comfort
Available with TractionBack®

Nominal Total Thickness - 8.5 mm AVG.

Stain Resist/Soil Release - StainSmart®

Flammability - ≥ 0.45 (Class I)

Texture Appearance Retention Rating (TARR) - Severe

Indoor Air Quality - CRI Green Label Plus™

GLP3237, Carpet Category 5Y

Installation Method

安装方式:



Monolithic
同一方向安装

TractionBack®

Simplify your modular installation with Milliken's patented TractionBack®, an innovative backing system that is faster, more cost efficient, and environmentally superior to wet adhesives and peel-and-stick carpet tile.



Declare.

M/PACT™

CARBON NEUTRAL PROGRAM

COASTLINE IS A CARBON NEUTRAL COLLECTION

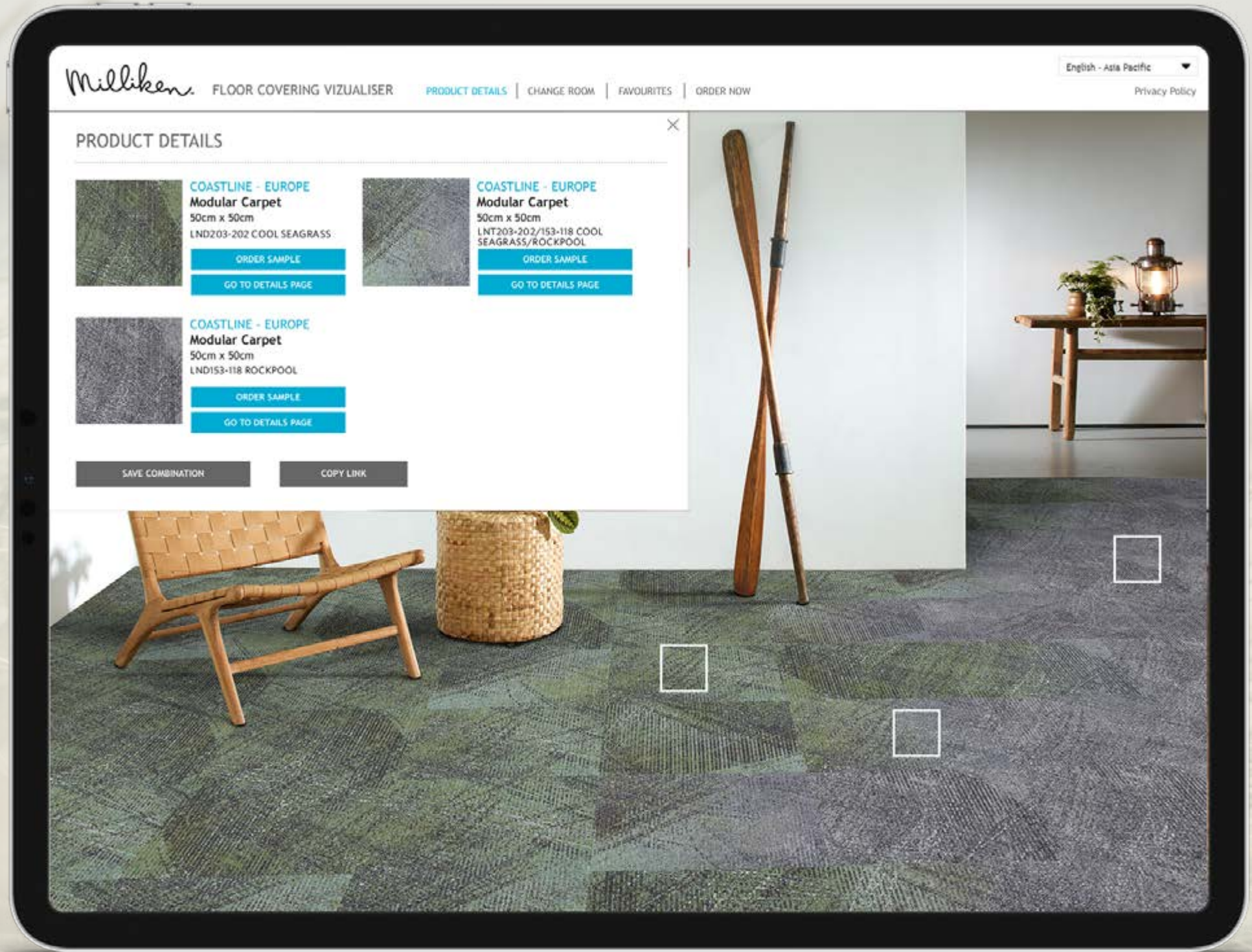
Climate change is one of the greatest threats facing humanity. Today, our carpet, LVT and entryway tiles are carbon neutral everywhere in the world. We invite you to learn more about the significant changes we've made, then let's work together to design a better future.

[LEARN MORE](#)



VIEW COASTLINE IN YOUR SPACE

Use the online visualiser to view different layouts of Coastline. Simply upload a photograph of your space and let the visualiser do the rest.



China

North & North West &
South West Of China
T +86 10 6465 1206
T +86 133 0101 8460
South of China &
HK & Macau
T +86 181 1743 0032
East & Central of China
T +86 21 6145 1758

India

Bangalore
T +91 98408 98963
Delhi
T +91 95010 11800
Hyderabad
T +91 99631 64059
Mumbai
T +91 98926 00362

Rest of Asia

Manila
T +63 915 816 7127
Seoul
T +82 2 3783 0747
Singapore
T +65 6593 1301
Tokyo
T +81 3 5203 8406
Jakarta
T +6221 2960 7222

Milliken™