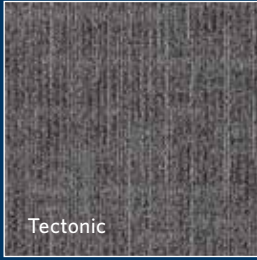


NORDIC STORIES

Isograd / Tectonic / Hidden Plains



Milliken™



150
years of *Milliken*



INSPIRED. INSPIRING.

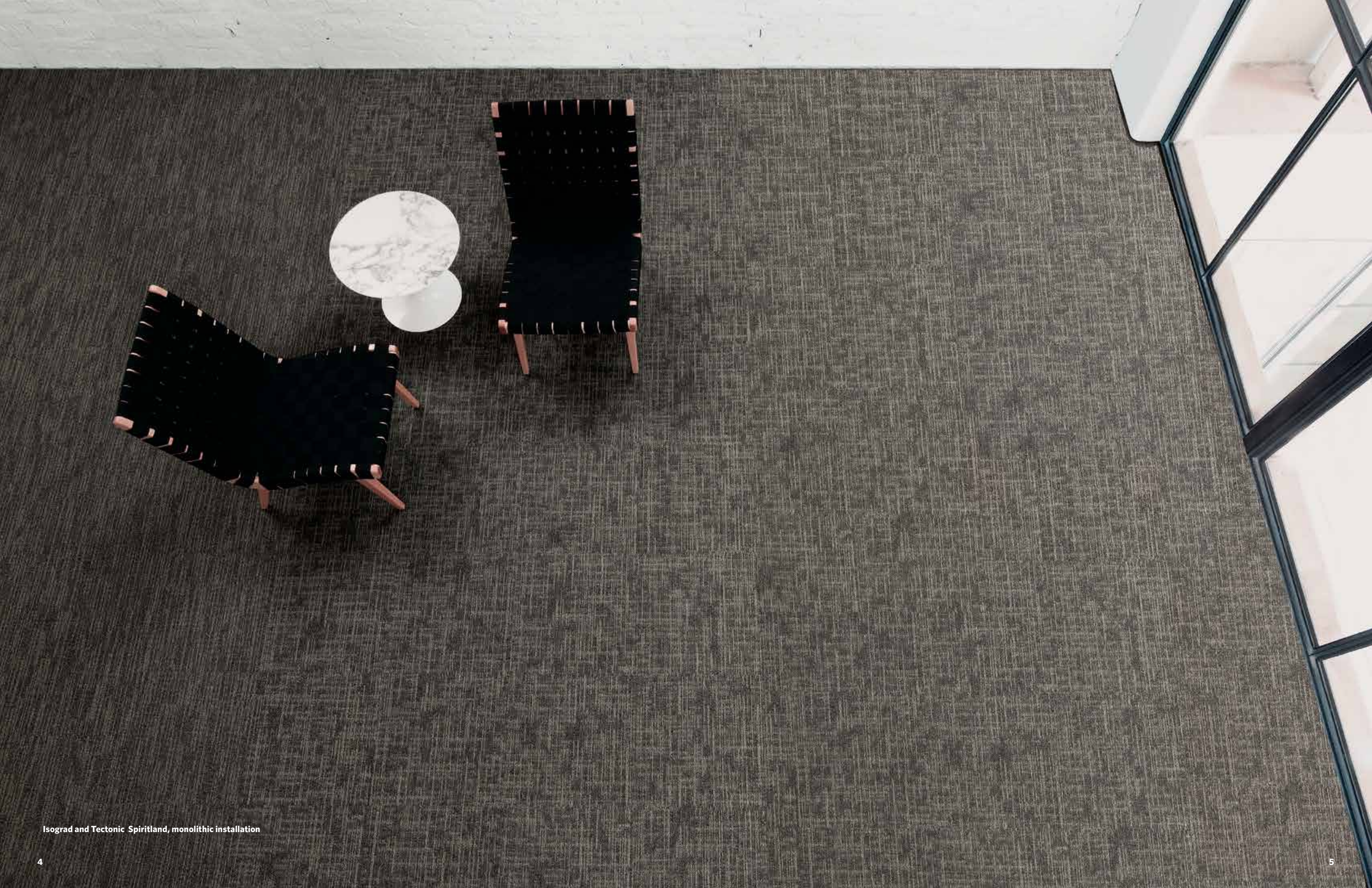
源于灵感 智启灵感



Isograd in Esker, monolithic installation



(top to bottom) Tectonic in Ash Blanket, Formwork 2.0 in Gable and Isograd in Esker, monolithic tile installation





Tectonic in Ash Blanket, monolithic installation



Isograd in Flume monolithic installation

INSPIRED. INSPIRING.

源于灵感 智启灵感

Our travels have taken us to extreme environments: the surreal contrasts of Iceland, a country powered by nature and made up of sulphurous plains, salt terraces and geothermal pools. This is geological drama at its best, a place where isolation and dark winters create the backdrop to a unique breed of creativity. In contrast the gentle landscape of Denmark. A country peppered with archipelagos and lush forests and home of 21st Century design, where form and function meet utopian ideology.

Nordic Stories is inspired by the textural landscape, geological extremes, folklore and modern culture of the Northern Hemisphere. Muted natural tones, black volcanic rock, deep blue lakes, rich golden moss, graphic landforms and bold architecture. This Collection represents the sensory experience that is the Nordics, a series of diverse countries with distinct identities that have collectively helped to define contemporary design culture.

旅行把我们带到北欧极端地貌：离奇的冰原，硫磺色的平原，梯田般的盐地，热气蒸腾的池沼。这一极致地貌所具有的荒凉孤寂和漫漫冬夜，竟为人们提供了源源创意。在丹麦这个森林繁茂，岛屿密布的北国，竟成为二十一世纪设计的起源地。物质的形与功能在这里与灵感的乌托邦相遇。

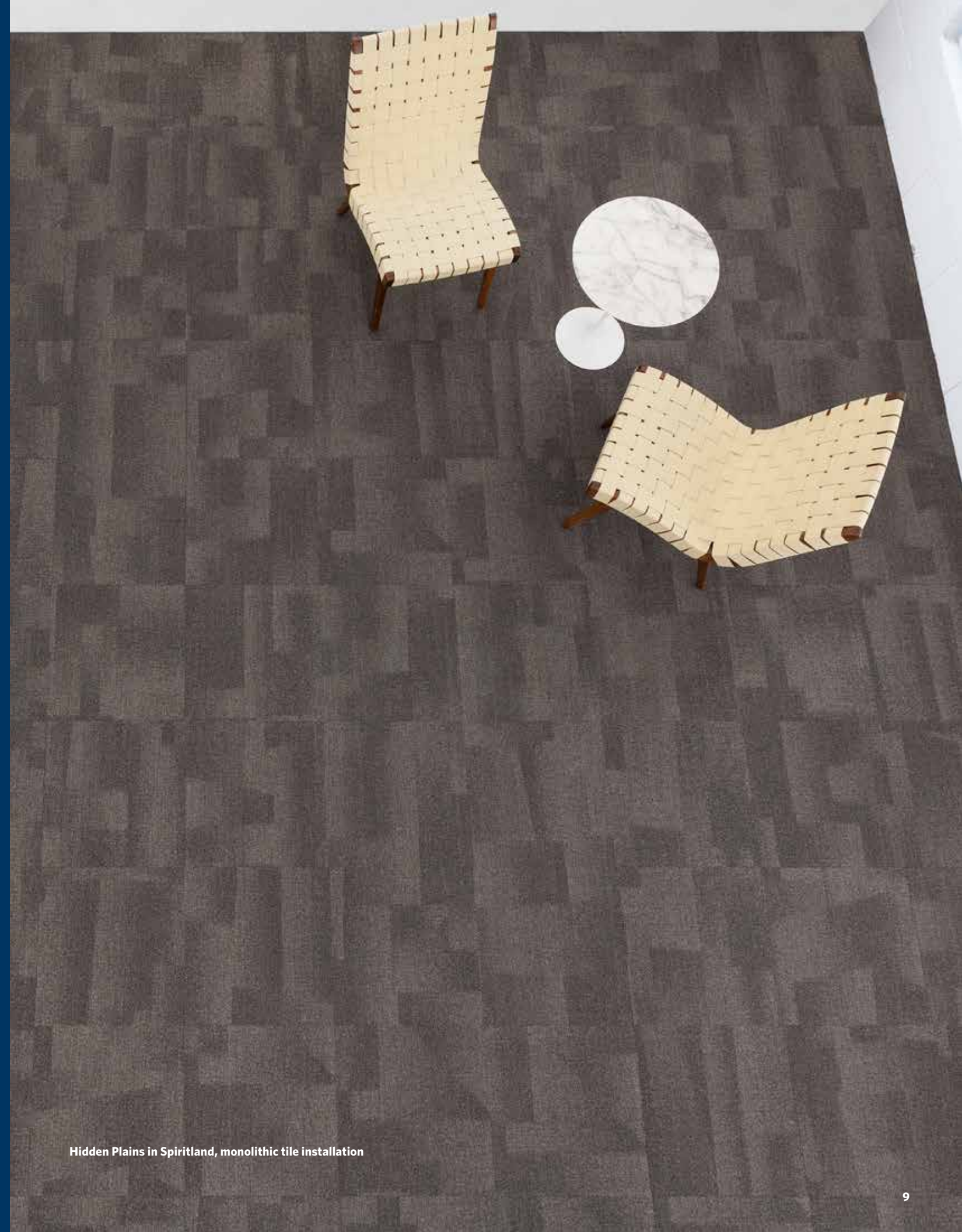
“北欧故事”的灵感来源于北欧粗犷而极端的景致，传统民俗以及现代文化。柔和的自然色调，黑色的火山岩石，湛蓝的深山湖泊，金黄的地衣苔藓，丰富多变的地貌，特征鲜明的建筑。这一系列产品展现了设计师对于北欧各国的感受，并且如此特征鲜明地诠释了当代设计文化。

우리의 여행은 극한의 환경까지 이어졌습니다. 자연의 힘이 넘치는 국가, 아이슬란드는 유황 평원, 소금 테라스, 지열로 덥혀진 물웅덩이 등 비현실적일 정도로 극명한 대비로 가득합니다. 이 곳은 장엄한 지질학의 드라마가 펼쳐지는 곳이며, 그 고립과 어두운 겨울은 독특한 창의성이 태어나는 모태가 됩니다. 아이슬란드와 선연한 대비를 이루는 나라, 덴마크는 여러 섬과 울창한 나무가 두드러지는 부드러운 풍경을 지니고 있으며 형태와 기능이 가장 이상적인 조화를 이루는 21세기 디자인의 발상지이기도 합니다.

Nordic stories 는 북반구 지역의 구조적인 풍경, 지질학적 특수성, 민속 및 현대문화로부터 영감을 받았습니다. 잔잔한자연의 색조, 검은 화산 바위, 깊고 푸른 호수, 풍요로운 황금빛을 띠는 이끼, 그래픽 같은 지형과 대담한 건축 양식. 이번 컬렉션은 뚜렷한 정체성을 지닌 다양한 국가들이 한데 모여 현대적인 디자인 문화를 구성하는 북유럽 특유의 감각적 경험을 담아냈습니다.

最果ての大自然への旅が始まります。
現実を超越したコントラストを持つアイスランドは、
硫黄の平野や塩段丘、地熱温泉などにより形成されており、自然からのパワーを得ています。
これは最高の地質学的ドラマであり、孤独で暗い冬はユニークな創造性を生み出す背景となっています。対照的に、穏やかな風景のデンマークは、群島や青々とした森によってスパイスを効かせており、空想的イデオロギーを表す21世紀デザインの本場となっています。

ノルディック・ストーリー・シリーズは、北半球の民間伝承及び現代文化、地質学的極限、テクスチャ的風景などからインスパイアされています。落ち着いた自然のトーンや黒い火山岩、深青色の湖、豊かな金色の苔、グラフィックな地形、力強い建築。現代のデザイン文化を形成する異なったアイデンティティを持つ国々が集まった北欧。その北欧人の感覚的経験に触れてみてください。



Hidden Plains in Spiritland, monolithic tile installation



Hidden Plains in Lahar, monolithic tile installation



Tectonic in Lahar, monolithic installation



Isograd in Lahar, monolithic installation

COLORLINE



IGD48-124 TWILIGHT



IGD121-145 SCHISTS



IGD124-94 SANDPIPER



IGD94-59 NORSE



TTC48-124 TWILIGHT



TTC121-145 SCHISTS



TTC124-94 SANDPIPER



TTC94-59 NORSE



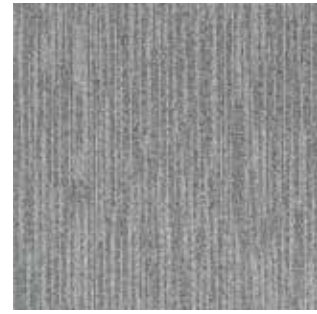
IGD120-178 ORES



IGD133-59 ALLUVIUM



IGD108-122 ESTUARY



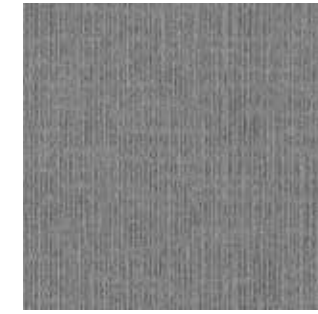
IGD180-138 SNOWMELT



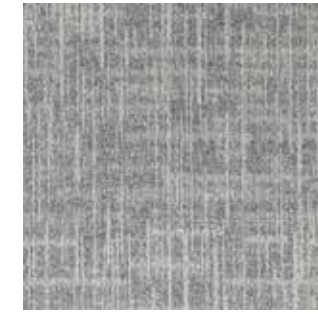
TTC120-178 ORES



TTC133-59 ALLUVIUM



TTC108-122 ESTUARY



TTC180-138 SNOWMELT



IGD122-120 SPIRITLAND



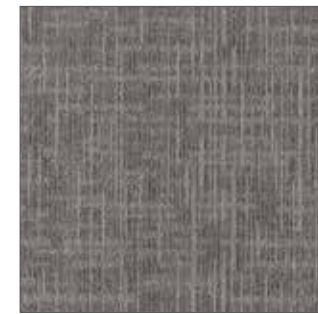
IGD108-13 FJORD



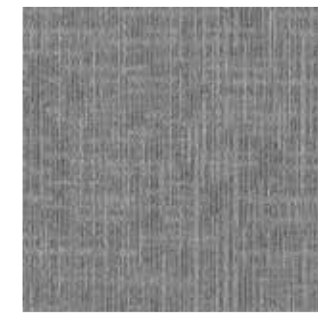
IGD133-120 FLUME



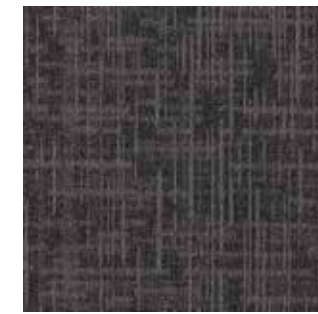
IGD67-59 LAHAR



TTC122-120 SPIRITLAND



TTC108-13 FJORD



TTC133-120 FLUME



TTC67-59 LAHAR



IGD6-108 AEOLIAN



IGD153-5 MINERAL



IGD13-119 ESKER



IGD157-178 ARCTIC OCEAN



TTC6-108 AEOLIAN



TTC153-5 MINERAL



TTC13-119 ESKER



TTC157-178 ARCTIC OCEAN



IGD119-27 ASH BLANKET



IGD19-27 KYANITE



TTC119-27 ASH BLANKET



TTC19-27 KYANITE

COLORLINE



HDP48-124 TWILIGHT



HDP121-145 SCHISTS



HDP124-94 SANDPIPER



HDP94-59 NORSE



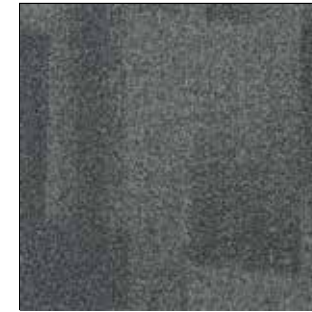
HDP120-178 ORES



HDP133-59 ALLUVIUM



HDP108-122 ESTUARY



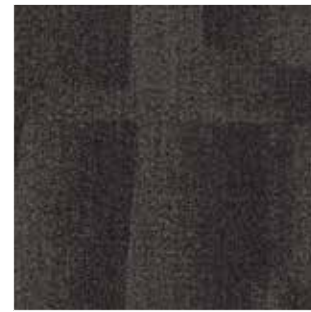
HDP180-138 SNOWMELT



HDP122-120 SPIRITLAND



HDP108-13 FJORD



HDP133-120 FLUME



HDP67-59 LAHAR



HDP6-108 AEOLIAN



HDP153-5 MINERAL



HDP13-119 ESKER



HDP157-178 ARCTIC OCEAN



HDP119-27 ASH BLANKET



HDP19-27 KYANITE



Hidden Plains in Lahar, monolithic tile installation

NORDIC STORIES

Isograd / Tectonic / Hidden Plains

SPECIFICATION

Construction - Tufted, Textured Loop

Tile Size - 50cm X 50cm (19.7"X 19.7")

Face Fiber - 100% Milliken Certified Nylon

Dye Method - Solution Dyed

Standard Backing - PVC-Free WellBAC™ Comfort
Available with TractionBack®

Nominal Total Thickness - 8.2 mm AVG. (Isograd)
8.4 mm AVG. (Hidden Plains/Tectonic)

PERFORMANCE

Antimicrobial - AlphaSan® AF Built-In Protection

Flammability - ≥ 0.45 (Class I)

Texture Appearance Retention Rating (TARR) - Severe

Indoor Air Quality - CRI Green Label Plus™ - GLP100130, CARPET CATEGORY 13X

技术指标

结构 - 簇绒织造圈绒结构

产品尺寸 - 50 厘米 X 50 厘米 (19.7 X 19.7 英寸)

表层纤维 - 100% 美利肯认证尼龙

染色技术 - 原液染色

标准底垫 - 不含 PVC 之 WellBAC™ Comfort 舒适软底
可选装 TractionBack® 免胶

额定总厚度 - 8.2 毫米 平均 (Isograd)
8.4 毫米 平均 (Hidden Plains/Tectonic)

产品性能

抗菌工艺 - AlphaSan® 内置保护

阻燃性 - ≥ 0.45 (一级)

外观保持等级 (TARR) - 重度商业使用

室内空气质量 CRI Green Label Plus™ - GLP100130, 地毯类别 13X



Installation Method 安装方式:



Monolithic
同一方向安装

China

Beijing / Tianjin / Wuhan / Shenzhen
T +86 10 6465 1206
Shanghai / Suzhou / Nanjing
Hangzhou / Hefei
T +86 21 6145 1758
Chengdu / Chongqing
T +86 181 1727 5593
Guangzhou
T +86 20 3846 8085
Hong Kong
T +852 3956 2259

India

Bangalore
T +91 98459 14059
Chennai
T +91 98408 98963
Delhi
T +91 98104 77922
Mumbai
T +91 98926 00362

Rest of Asia

Manila
T +63 915 816 7127
Seoul
T +82 2 3783 0747
Singapore
T +65 6593 1301
Tokyo
T +81 3 5203 8406
Jakarta
T +6221 5289 7330



www.millikencarpet.com

2710027460

Issued Jun 2019