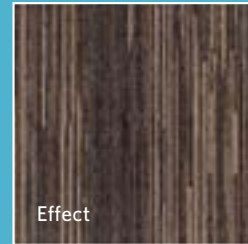


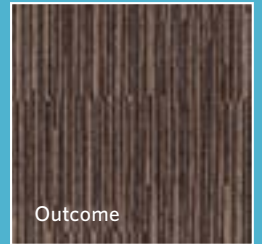


CONSEQUENCE 2.0

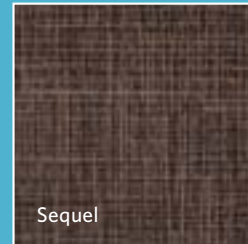
Effect / Outcome
Sequel / Upshot



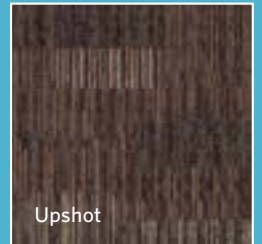
Effect



Outcome



Sequel



Upshot



Milliken™



INSPIRED. INSPIRING.

Any single piece of a bird's nest is weak. But together, they form a constellation of tiny junctures that, as one, can withstand the strongest winds and the heaviest rain. Consequence builds upon a multitude of simple lines to form a design that is synaptic and yet structural, fractal and yet strong.

一个孤立存在的鸟巢都是单薄脆弱的。当它们聚合在一起，却形成了一个只有微小缝隙的整体。它可以抵挡最强劲的寒风，也可以遮蔽最猛烈的暴雨。就像 Consequence 2.0 那样简洁的线条组合设计，既独立又富涵结构性，既有几何片形的美感又坚固强劲。



Upshot in Lineup, vertical ashlar installation



Sequel in Lineup, vertical ashlar installation



Effect in Side, monolithic installation



Outcome in Side, monolithic installation



Outcome (*field*) and Sequel (*border*) in Side, monolithic installation

Get more at millikencarpetsamplestudio.com





Upshot in Trickle Up, monolithic installation



Sequel in Trickle Up, monolithic installation



Effect in Trickle Up, monolithic installation



Outcome in Trickle Up, monolithic installation



Effect in Direct, monolithic installation



SEQ21-41 CONCEPT (Effect EFF, Outcome OUT, Upshot UPS)



SEQ14-122 LOGIC (Effect EFF, Outcome OUT, Upshot UPS)



SEQ95-86 GREENHOUSE (Effect EFF, Outcome OUT, Upshot UPS)



SEQ62-42 LEAFY (Effect EFF, Outcome OUT, Upshot UPS)



SEQ04-41 VISUAL (Effect EFF, Outcome OUT, Upshot UPS)



SEQ39-124 TRICKLE UP (Effect EFF, Outcome OUT, Upshot UPS)



SEQ124-47 PLATEAU (Effect EFF, Outcome OUT, Upshot UPS)



SEQ124-59 DIRECT (Effect EFF, Outcome OUT, Upshot UPS)

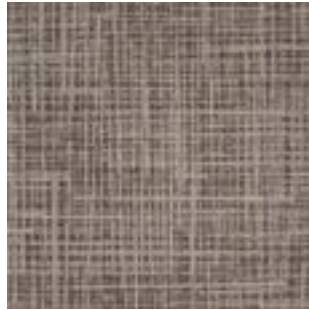
鳥の巣となる木の枝は単体としては決して頑丈なものではありません。しかし星座を形成するようにそれらがまると、強い風や激しい雨にも耐えることができるようになります。CONSEQUENCEは多様な直線を接合・構築することによって力強いデザインを生み出しています。



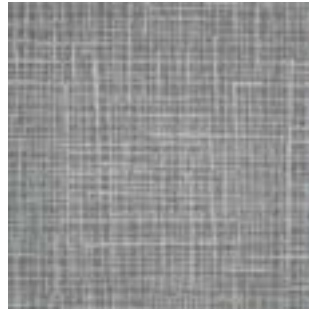
Outcome in Direct, monolithic installation



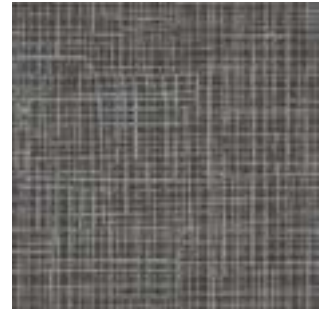
SEQ48-108 SIDE (Effect EFF, Outcome OUT, Upshot UPS)



SEQ108-79 POSITION (Effect EFF, Outcome OUT, Upshot UPS)



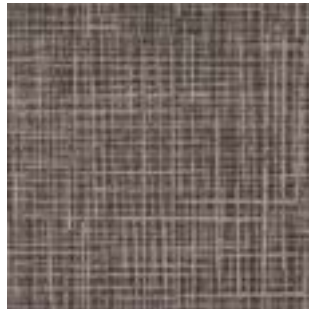
SEQ132-13 LINEUP (Effect EFF, Outcome OUT, Upshot UPS)



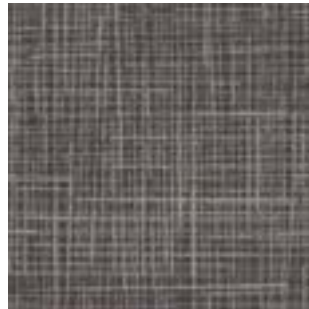
SEQ159-119 A LIST (Effect EFF, Outcome OUT, Upshot UPS)



SEQ95-27 DELAY (Effect EFF, Outcome OUT, Upshot UPS)



SEQ108-27 COATTAIL (Effect EFF, Outcome OUT, Upshot UPS)



SEQ55-46 FLOODGATE (Effect EFF, Outcome OUT, Upshot UPS)



SEQ131-119 DRAMA (Effect EFF, Outcome OUT, Upshot UPS)

새 등지의 한 조각은 연약합니다. 하지만 함께 모이면, 수많은 작은 점점들이 모인 커다란 별자리처럼 하나가 되어 세상의 가장 강한 바람과 폭풍우도 견뎌낼 수 있습니다. 이처럼 여러 결과가 축적되어 수많은 단순한 선들을 만들어내고, 여기서 신경망처럼 복잡하되 구조적인, 또한 프랙탈적 이면서도 강렬한 디자인이 태어나는 것입니다.

CONSEQUENCE 2.0

Effect / Outcome / Sequel / Upshot

SPECIFICATION

CONSTRUCTION

TUFTED, TEXTURED LOOP PILE

TILE SIZE

50CM X 50CM (19.7 X 19.7 IN.)

FACE FIBER

100% MILLIKEN CERTIFIED TYPE 6.6 NYLON

STAIN REPEL/STAIN RESIST/ SOIL RELEASE

STAINSMART®

ANTIMICROBIAL

ALPHASAN® BUILT-IN PROTECTION

DYE METHOD

MILLITRON®

STANDARD BACKING

PVC-FREE COMFORT PLUS® ES CUSHION
AVAILABLE WITH TRACTIONBACK®

NOMINAL TOTAL THICKNESS

10.4 MM AVG.

FLAMMABILITY

≥ 0.45 (CLASS I)

APPEARANCE RETENTION RATING (CRI TM101)

SEVERE USE

INDOOR AIR QUALITY - CRI GREEN LABEL PLUS™

GLP3237, CARPET CATEGORY 5Y

技术指标

结构

簇绒织造圈绒结构

产品尺寸

50厘米 X 50厘米 (19.7 X 19.7英寸)

表层纤维

100% 美利肯认证尼龙6.6

抗污/防污/去污

STAINSMART®

抗菌工艺

ALPHASAN® 内置保护

染色技术

MILLITRON® 电脑数码针染

标准底垫

不含PVC之COMFORT PLUS® ES 软底
可选装TRACTIONBACK® 底背

额定总厚度

10.4 毫米 平均

阻燃性

≥ 0.45 (一级)

外观保持等级 (CRI TM101)

频繁商业使用

室内空气品质 - CRI GREEN LABEL PLUS™

GLP3237, 地毯类别5Y

제품 사양서

구조

TUFTED, TEXTURED LOOP PILE

타일 사이즈

50CM X 50CM (19.7 X 19.7 IN.)

표면 파이버

100% MILLIKEN CERTIFIED
TYPE 6.6 NYLON

얼룩 억제/얼룩 방지/오염 배출

STAINSMART®

항균 처리

ALPHASAN® BUILT-IN PROTECTION

염색 방식

MILLITRON®

백킹재

PVC-FREE COMFORT PLUS® ES CUSHION
TRACTIONBACK® 가능

전체 두께

10.4 MM AVG.

방염성

≥ 0.45 (CLASS I)

외관 유지 등급(CRI TM101)

SEVERE USE

실내 공기 품질 - CRI GREEN LABEL PLUS™

GLP3237, CARPET CATEGORY 5Y

規格

タイプ

タフテッドテクスチャードループパイル

タイル寸法

50CM X 50CM (19.7 X 19.7 IN.)

パイル

100% ミリケン社認定ウエアオン®
6.6 タイプ・ナイロン

防汚加工

STAINSMART® (ステインスマート)

抗菌加工

ALPHASAN® BUILT-IN PROTECTION

染色方法

MILLITRON® (ミリトロン)

標準バックング

PVCフリー アン COMFORT PLUS® ESクッション
トラクションバック® は別注にて

公称全厚

10.4 MM AVG.

難燃性

≥ 0.45 (CLASS I)

外觀保持性 (CRITM101)

SEVERE USE

室内空気質CRI Green Label Plus™

GLP3237, カーペット部門 5Y

Installation Method:

50CM X 50CM



Vertical Ashlar

垂直品字

Vertical Ashlar

アシュラー貼り



Monolithic

同一方向安装

Monolithic

流し貼り



All Patterns

Effect, Outcome
and Sequel

China

Beijing / Chengdu / Wuhan

T +86 10 6465 1206

Guangzhou

T +86 20 3846 8085

Shenzhen

T +86 755 8304 6688

Hong Kong

T +852 2529 5200

Shanghai

T +86 21 6145 5555

www.millikencarpet.com

India

Bangalore

T +91 98459 14059

Chennai

T +91 98408 98963

Delhi

T +91 98104 77922

Mumbai

T +91 98926 00362

Rest of Asia

Manila

T +632 849 3966

Seoul

T +82 2 3783 0747

Singapore

T +65 6593 1301

Tokyo

T +81 3 5203 8406



Growing greener for over 100 years.
Visit milliken.com for more information