



SURFACE STUDY

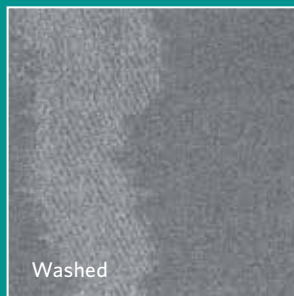
Burned / Distressed / Washed



Burned



Distressed



Washed



Milliken™



Distressed and Burned in Ripple, ashlar installation



Washed in Ripple, vertical ashlar installation



INSPIRED.

Deliberate or naturally occurring, material transformations offer a contradiction of beauty arising from damage or aging. Whether irregular or structured, the resulting elegance can be unexpected. This new, reinvented surface challenges our acceptance of where materials can be pushed to emulate luxury, fragility, simplicity; yet offer the strength of high performance flooring.

Three approaches of surface transformation are explored in this collection: Burned, Washed, Distressed. Each inspires an intentional balance of texture and irregularity to offer a floor plane that lies quietly or makes a statement.

刻意地或自然地，材质在变化中展现出一种残缺或旧物之美。无论有序无序，这种美感却不可预期。这种新的表面质感挑战我们对于材质的接受力，它可以是奢华，破碎，简单，当依然体现卓越的地毯品质。

在这个系列里面我们探索了三种不同的表面肌理变化：燃烧，水洗，磨损。每一种花纹都带来设计灵感，其来自于表面质感和不规则的有意平衡，从而使得地面铺装展现出一种宁静的张力。

Burned, Distressed and Washed (left to right) in Bleach



Washed and Distressed in Bleach, ashlar installation



Burned in Timeworn, ashlar installation



Distressed in Timeworn, ashlar installation

COLORLINE

Washed



WAS48-121 BLEACH
(Burned BUR48-121, Distressed DIS48-121)



WAS165 TIMEWORN
(Burned BUR165, Distressed DIS165)



WAS15-69 SANDBLASTED
(Burned BUR15-69, Distressed DIS15-69)



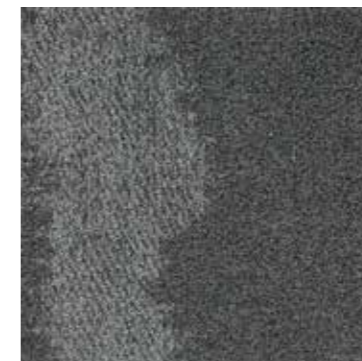
WAS173-174 ASH
(Burned BUR173-174, Distressed DIS173-174)



WAS173-152 QUARTZ
(Burned BUR173-152, Distressed DIS173-152)



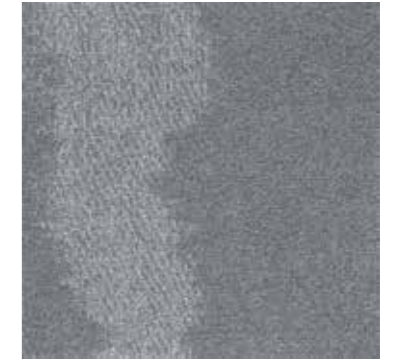
WAS118-13 RAW
(Burned BUR118-13, Distressed DIS118-13)



WAS119-174 CHARRED
(Burned BUR119-174, Distressed DIS119-174)



WAS154-133 TAR
(Burned BUR154-133, Distressed DIS154-133)



WAS152-106 RIPPLE
(Burned BUR152-106, Distressed DIS152-106)



WAS157-123 VARNISHED
(Burned BUR157-123, Distressed DIS157-123)



WAS118 FRICTION
(Burned BUR118, Distressed DIS118)



WAS73-123 ABRASION
(Burned BUR73-123, Distressed DIS73-123)

SURFACE STUDY

Burned / Distressed / Washed

SPECIFICATION

Construction - Tufted, Textured Loop

Tile Size - 50cm X 50cm (19.7" X 19.7")

Face Fiber - ECONYL® Solution-Dyed Nylon

Dye Method - Solution Dyed

Standard Backing - PVC-Free WellBAC™ Comfort
Available with TractionBack®

Nominal Total Thickness - 7.9 mm AVG.

PERFORMANCE

Flammability - ≥ 0.45 (Class I)

Texture Appearance Retention Rating (TARR) - Heavy

Indoor Air Quality - CRI Green Label Plus™ - GLP100130, Carpet Category 13X

技术指标

结构 - 簇绒织造圈绒结构

产品尺寸 - 50 厘米 X 50 厘米 (19.7 X 19.7 英寸)

表层纤维 - Econyl® 原液染尼龙

染色技术 - 原液染色

标准底垫 - 不含 PVC 之 WellBAC™ Comfort 舒适软底
可选装 TractionBack® 免胶

额定总厚度 - 7.9 毫米 平均

产品性能

阻燃性 - ≥ 0.45 (一级)

外观保持等级 (TARR) - 频繁商业使用

室内空气质量 CRI Green Label Plus™ - GLP100130, 地毯类别 13X



Installation Method 安装方式:



Ashlar
品字安装



V. Ashlar
纵向品字安装

China
North & North West &
South West Of China
T +86 10 6465 1206
T +86 133 0101 8460
South of China &
HK & Macau
T +86 181 1743 0032
East & Central of China
T +86 21 6145 1758

India
Bangalore
T +91 98408 98963
Delhi
T +91 95010 11800
Hyderabad
T +91 99631 64059
Mumbai
T +91 98926 00362

Rest of Asia
Manila
T +63 915 816 7127
Seoul
T +82 2 3783 0747
Singapore
T +65 6593 1301
Tokyo
T +81 3 5203 8406
Jakarta
T +6221 2960 7222



www.millikencarpet.com

2710027332

Issued Jun 2019