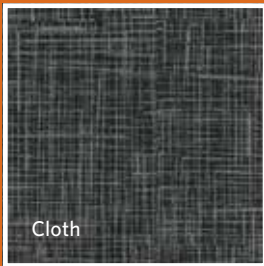
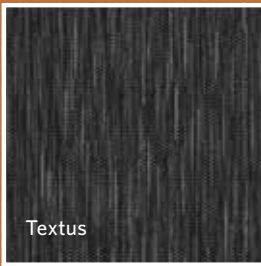


TEXTUS 2.0

Textus / Cloth

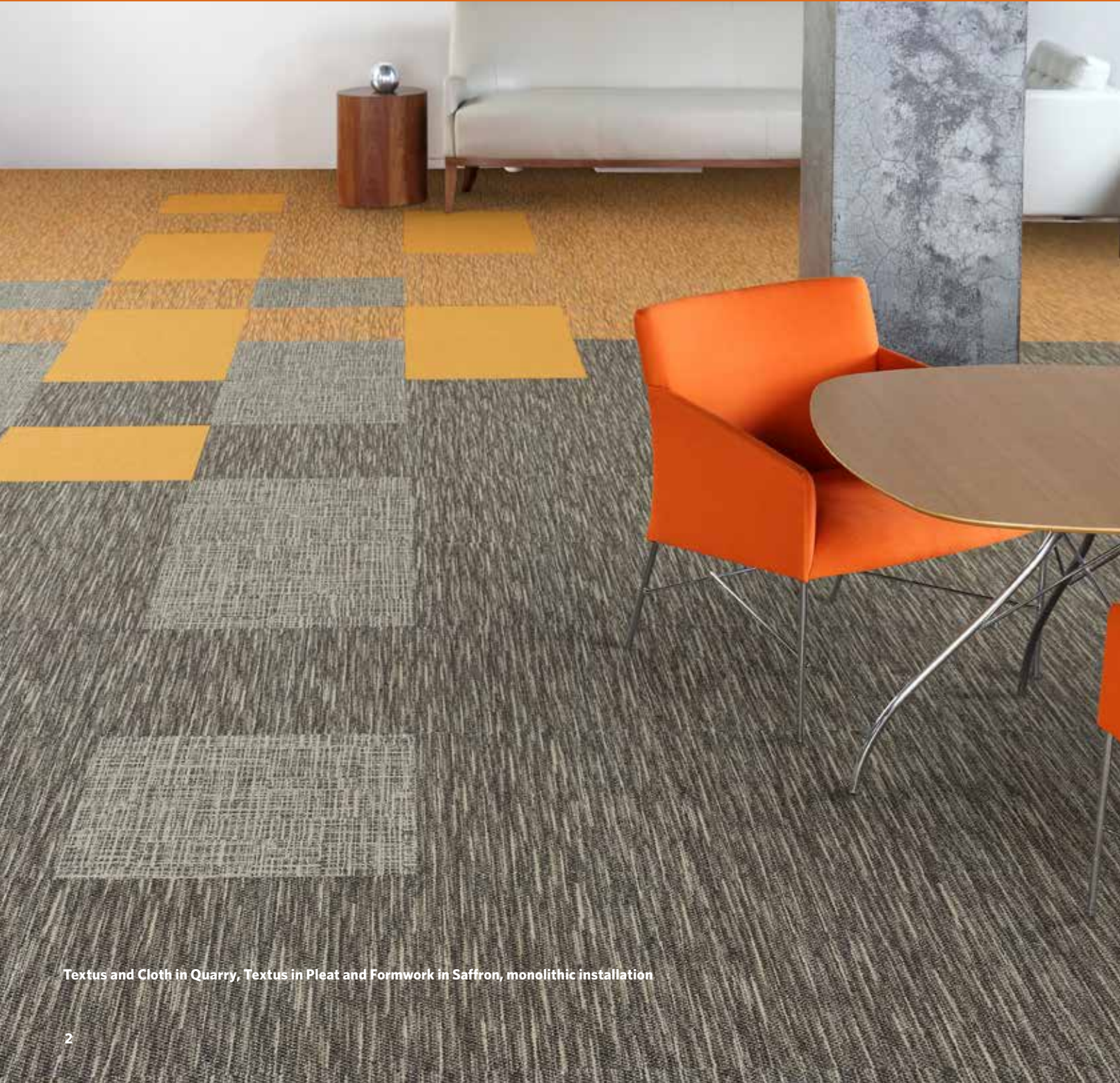


Milliken™



INSPIRED. INSPIRING.

源于灵感 智启灵感



Textus and Cloth in Quarry, Textus in Pleat and Formwork in Saffron, monolithic installation



Cloth in Boulder, monolithic installation



Textus in Hemp, monolithic installation



Cloth in Hemp, monolithic installation



Textus and Cloth in Cloud, monolithic installation



Textus in Quarry and Bamboo, monolithic installation

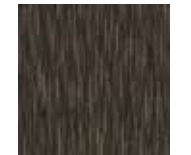
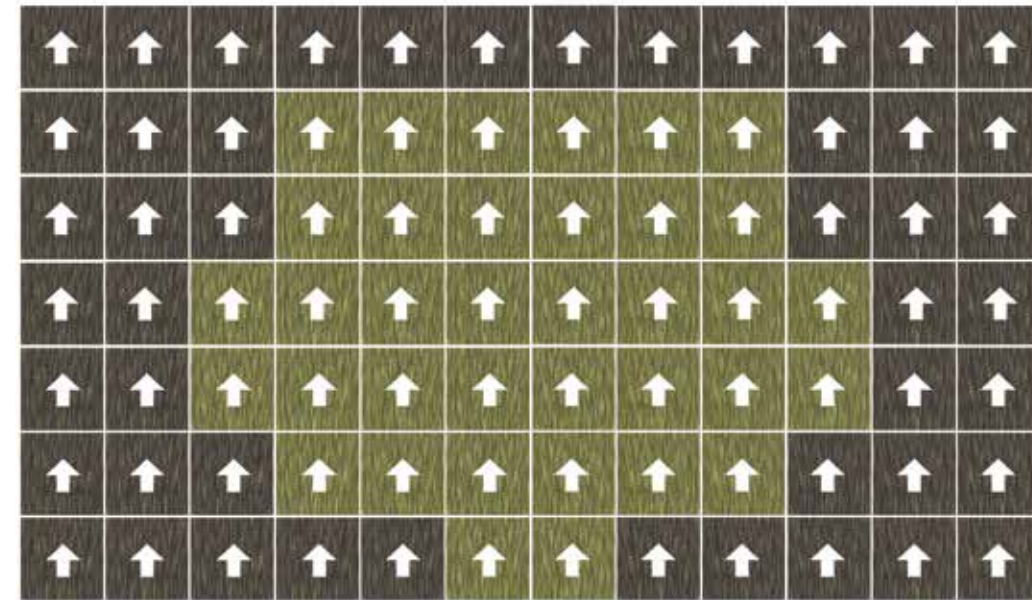


Textus and Cloth in Daybreak, monolithic installation



Textus in Chino, monolithic installation

Engineered Installation Options

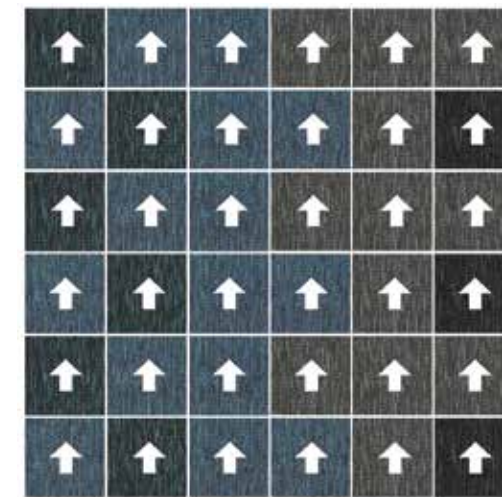


TEX145 QUARRY



TEX202 BAMBOO

Shown on page 8-9



TEX151 POPLINE



TEX157 BROCADE



TEX174 CLOUD



TEX119 DUSK

Shown on page 15



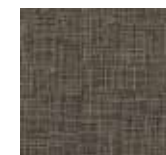
TEX189 PLEAT



FWK105-135 SAFFRON



TEX145 QUARRY



CTH145 QUARRY

Shown on page 2

COLORLINE

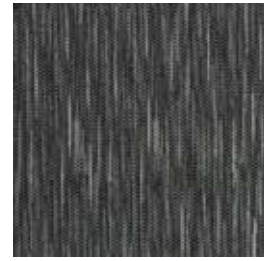
TEXTUS



TEX15 HEMP



TEX174 CLOUD



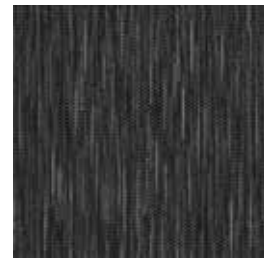
TEX153 CHIFFON



TEX145 QUARRY



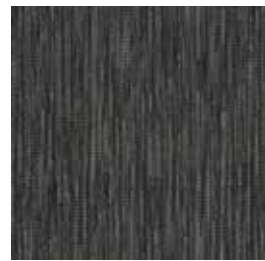
TEX131 WAVE



TEX118 DAYBREAK



TEX10 BOULDER



TEX154 TWILL

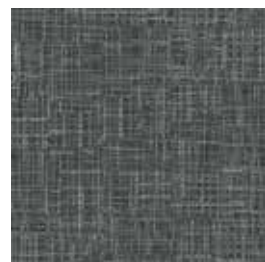


TEX119 DUSK

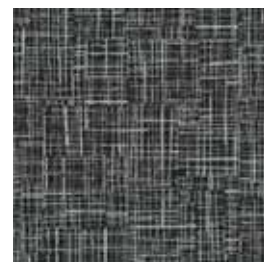
CLOTH



CTH15 HEMP



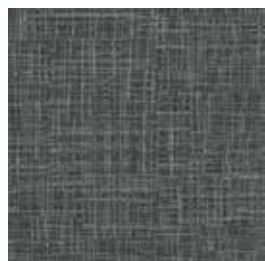
CTH174 CLOUD



CTH153 CHIFFON



CTH145 QUARRY



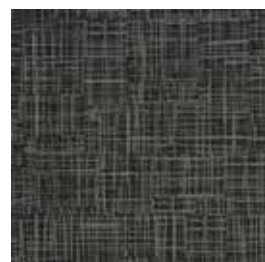
CTH131 WAVE



CTH118 DAYBREAK



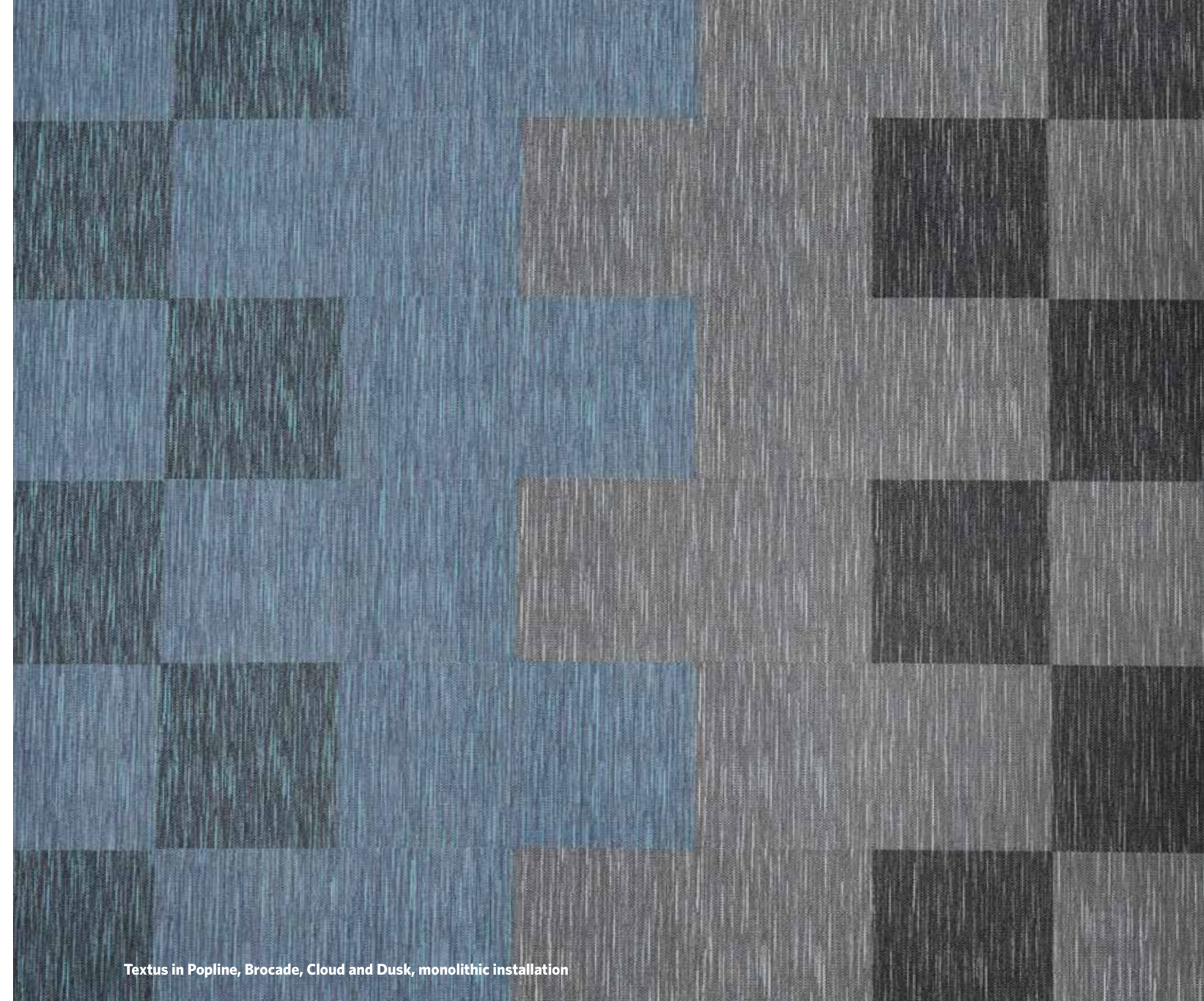
CTH10 BOULDER



CTH154 TWILL

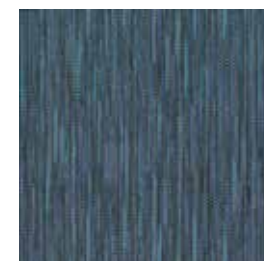


CTH119 DUSK



Textus in Popline, Brocade, Cloud and Dusk, monolithic installation

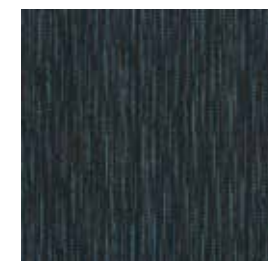
TEXTUS



TEX151 POPLINE



TEX157 BROCADE



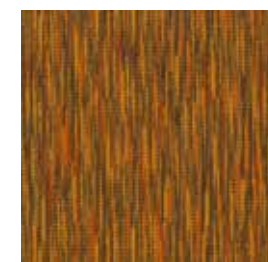
TEX19 OXFORD



TEX202 BAMBOO



TEX188 CHINO



TEX189 PLEAT

TEXTUS 2.0

Textus & Cloth

SPECIFICATION

Construction - Tufted, Textured Loop

Tile Size - 50cm X 50cm (19.7" X 19.7")

Face Fiber - 100% Milliken Certified Nylon

Dye Method - Millitron®

Standard Backing - PVC-Free WellBAC™ Function
Available with TractionBack®

Nominal Total Thickness - 5.8 mm AVG.

PERFORMANCE

Stain Repel/Stain Resist/Soil Release - StainSmart®

Flammability - ≥ 0.45 (Class I)

Texture Appearance Retention Rating (TARR) - Severe

Indoor Air Quality - CRI Green Label Plus™ - GLP3210, Carpet Category 6Y

技术指标

结构 - 簇绒织造圈绒结构

产品尺寸 - 50 厘米 X 50 厘米 (19.7 X 19.7 英寸)

表层纤维 - 100% 美利肯认证尼龙

染色技术 - Millitron® 电脑数码针染

标准底垫 - 不含 PVC 之 WellBAC™ Function 弹性底背
可选装 TractionBack® 底背

额定总厚度 - 5.8 毫米 平均

产品性能

抗污 / 防污 / 去污 - StainSmart®

阻燃性 - ≥ 0.45 (一级)

外观保持等级 (TARR) - 重度商业使用

室内空气质量 CRI Green Label Plus™ - GLP3210, 地毯类别 6Y

Installation Method 安装方式:



Monolithic
同一方向安装

TractionBack®

Simplify your modular installation with Milliken's patented TractionBack®, an innovative backing system that is faster, more cost efficient, and environmentally superior to wet adhesives and peel-and-stick carpet tile.



Declare.

Milliken

China
North & North West &
South West Of China
T +86 10 6465 1206
T +86 133 0101 8460
South of China &
HK & Macau
T +86 181 1743 0032
East & Central of China
T +86 21 6145 1758

India
Bangalore
T +91 98408 98963
Delhi
T +91 95010 11800
Hyderabad
T +91 99631 64059
Mumbai
T +91 98926 00362

Rest of Asia
Manila
T +63 915 816 7127
Seoul
T +82 2 3783 0747
Singapore
T +65 6593 1301
Tokyo
T +81 3 5203 8406
Jakarta
T +6221 2960 7222



www.millikencarpet.com

2710028820
Issued Jun 2020