



Draftwork



Groundwork

**WICKER
CONTRACT 2.0**
Draftwork/ Groundwork



Milliken[®]

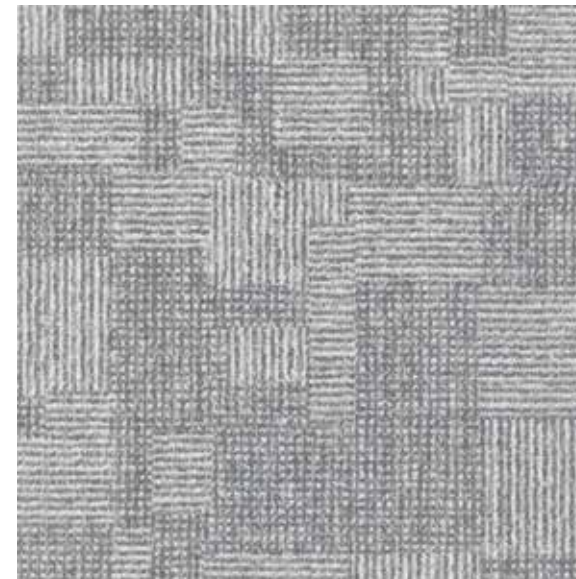


INSPIRED. INSPIRING

Basketry is a traditional form of weaving using natural plant materials. 3 dimensional forms can be created through the tightly interlaced fibers.

The Wicker Contract collection explores this texture of basket weave structures. Geometric yet Organic.

The 2 patterns act as coordinates, field: Groundwork and pattern: Draftwork.



Draftwork
DFW144-108 STEM
 50cmx50cm

Groundwork
GDW144-108 STEM
 50cmx50cm



Groundwork in Stem, quarter-turn installation



Draftwork in Stem, monolithic installation



Draftwork and Groundwork in Rope, monolithic installation

Draftwork



DFW4-93 OAK



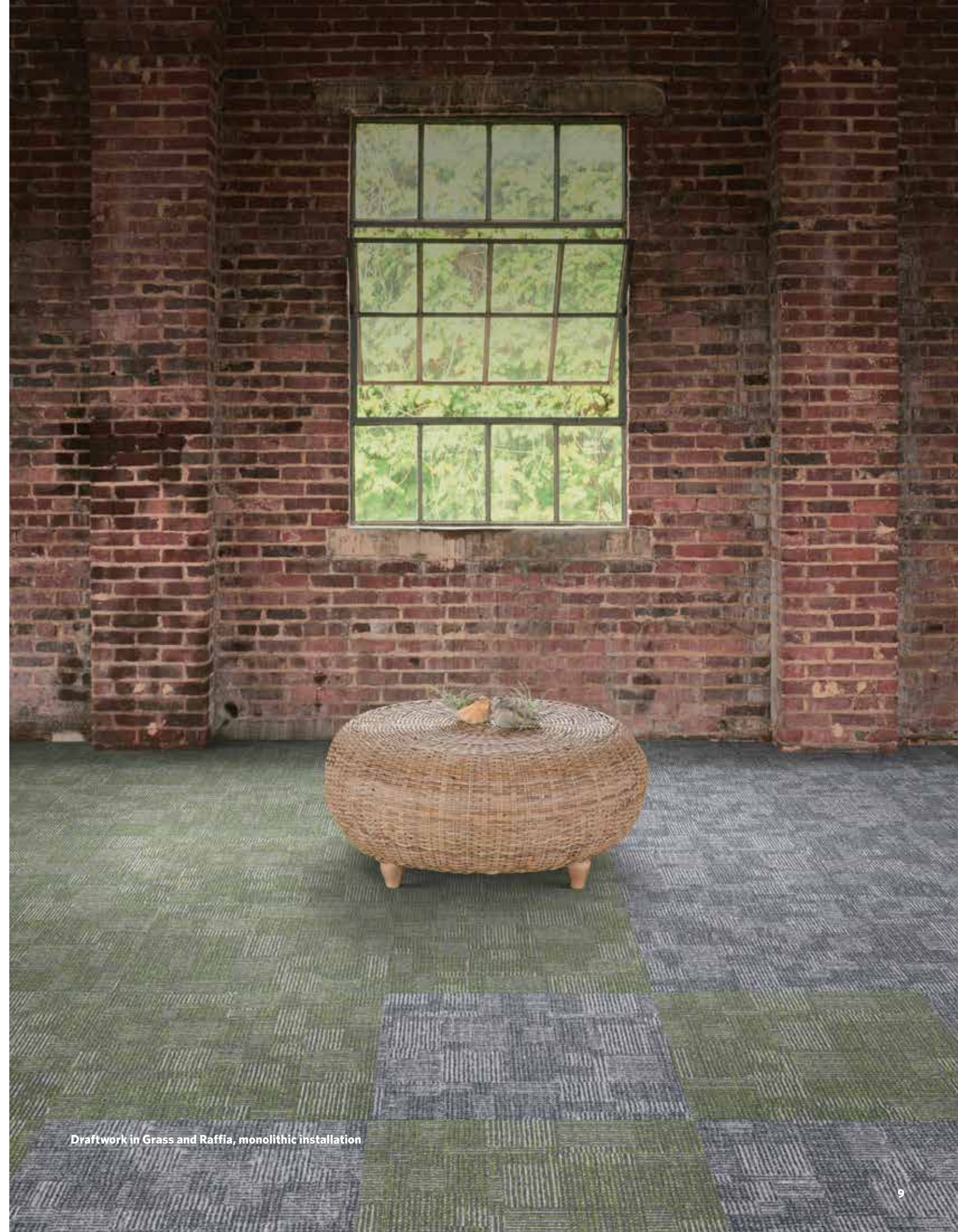
DFW5-141 GRASS



DFW153-118 RAFFIA



Draftwork in Oak, monolithic installation



Draftwork in Grass and Raffia, monolithic installation

Groundwork



GDW4-93 OAK



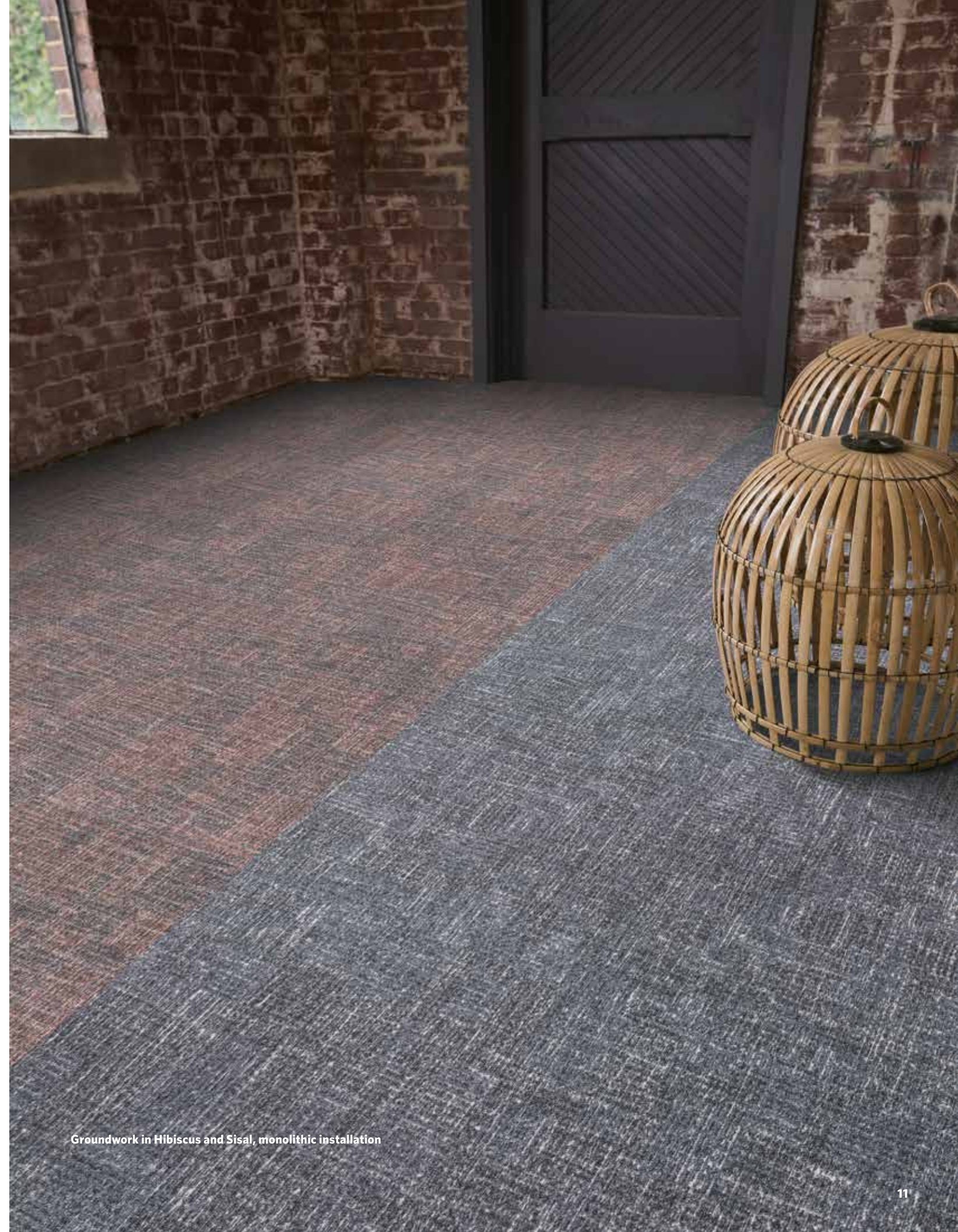
GDW106-104 HIBISCUS



GDW144-154 SISAL



Groundwork in Oak, monolithic installation



Groundwork in Hibiscus and Sisal, monolithic installation



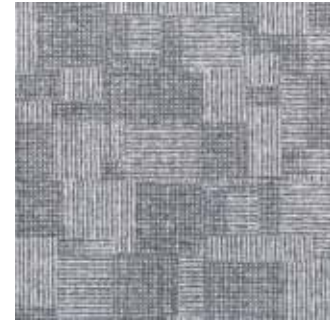
Groundwork in Splint, Progression and Precision in Blue Rhythms, monolithic installation

COLORLINE

Draftwork



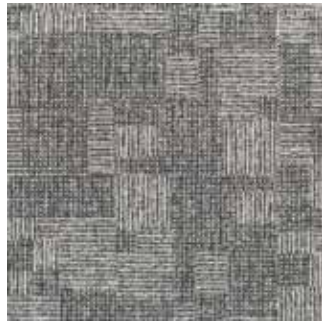
DFW144-108 STEM



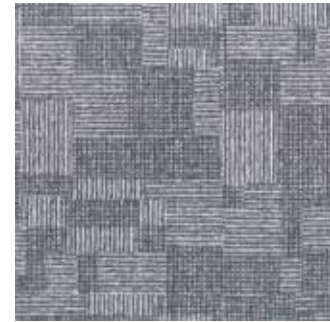
DFW144-153 ROPE



DFW4-93 OAK



DFW79-173 PINE



DFW144-154 SISAL



DFW106-104 HIBISCUS



DFW152-118 WILLOW



DFW153-118 RAFFIA



DFW5-141 GRASS



DFW165-79 STICK



DFW131-119 WIRE



DFW25-140 SPLINT

Groundwork



GDW144-108 STEM



GDW144-153 ROPE



GDW4-93 OAK



GDW79-173 PINE



GDW144-154 SISAL



GDW106-104 HIBISCUS



GDW152-118 WILLOW



GDW153-118 RAFFIA



GDW5-141 GRASS



GDW165-79 STICK



GDW131-119 WIRE



GDW25-140 SPLINT



WICKER CONTRACT 2.0

Draftwork / Groundwork

SPECIFICATION

Construction - Tufted, Textured Loop

Tile Size - 50cm X 50cm (19.7" X 19.7")

1m X 1m (39.4 X 39.4 In.) (Only Draftwork)

Face Fiber - 100% Milliken Certified Nylon

Dye Method - Millitron®

Standard Backing - PVC-Free WellBAC™ Comfort

Available with TractionBack®

Nominal Total Thickness - 8.5 mm AVG.

Stain Repel/Stain Resist/Soil Release - StainSmart®

Flammability - ≥ 0.45 (Class I)

Texture Appearance Retention Rating (TARR) - Severe

Indoor Air Quality - CRI Green Label Plus™

GLP3237, Carpet Category 5Y

技术指标

结构 - 簇绒织造圈绒结构

产品尺寸 - 50厘米 X 50厘米 (19.7 X 19.7英寸)

1米 X 1米 (39.4 X 39.4英寸) (仅限Draftwork)

表层纤维 - 100% 美利肯认证尼龙

染色技术 - Millitron® 电脑数码针染

标准底垫 - 不含PVC之 WellBAC™ Comfort 舒适软底

可选装 TractionBack® 免胶

额定总厚度 - 8.5 毫米 平均

抗污/防污/去污 - StainSmart®

阻燃性 - ≥ 0.45 (一级)

外观保持等级 (TARR) - 重度商业使用

室内空气质量 CRI Green Label Plus™ - GLP3237, 地毯类别 5Y

Installation Method 安装方式:



Monolithic
同一方向安装



Quarter-turn
转直角安装

TractionBack®

Simplify your modular installation with Milliken's patented TractionBack®, an innovative backing system that is faster, more cost efficient, and environmentally superior to wet adhesives and peel-and-stick carpet tile.

www.milliken地毯.com



Declare.

China
North & North West &
South West Of China
T +86 10 6465 1206
T +86 133 0101 8460
South of China &
HK & Macau
T +86 181 1743 0032
East & Central of China
T +86 21 6145 1758

India
Bangalore
T +91 98408 98963
Delhi
T +91 95010 11800
Hyderabad
T +91 99631 64059
Mumbai
T +91 98926 00362

Rest of Asia
Manila
T +63 915 816 7127
Seoul
T +82 2 3783 0747
Singapore
T +65 6593 1301
Tokyo
T +81 3 5203 8406
Jakarta
T +6221 2960 7222

