



Shadowbox



Shardlines

OUT OF THE SHADOWS 2.0
Shadowbox/ Shardlines



Milliken



INSPIRED. INSPIRING.

In the space of a moment's reflection, one has the chance to see below the surface - to discover new depths, untold stories, and underlying inflections.

Out of the Shadows 2.0 gives us a chance to reflect, to look more closely, if just for a second and see the once-hidden stories rise from their depths.



SHADOWBOX



Shadowbox in Outline, monolithic installation





SHARDLINES



Shardlines in Outline, monolithic installation

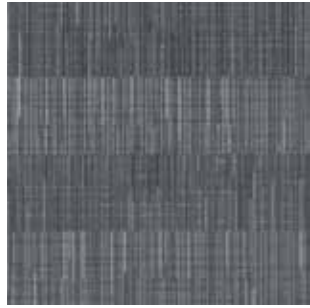


Shardlines in Shape, monolithic installation



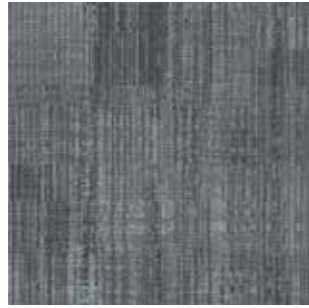
Shadowbox and Shardlines in Opaque, monolithic installation

Shadowbox

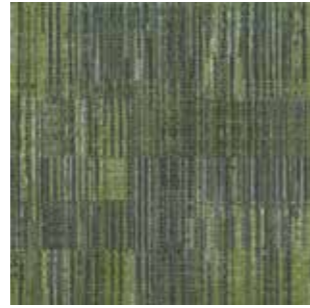


SHB153-154 HINT

Shardlines



SHL153-154 HINT



SHL118-141 TREE SHADE



Shadowbox and Shardlines in Hint, Shardlines in Tree Shade, monolithic installation



Shadowbox



SHB13-154 OUTLINE

Shardlines



SHL13-154 OUTLINE

Shardlines



SHL118-140 MOONLIGHT



Shadowbox and Shardlines in Outline, Shardlines in Moonlight, monolithic installation

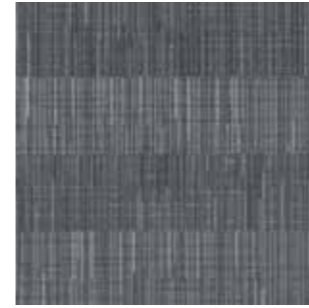


Shardlines



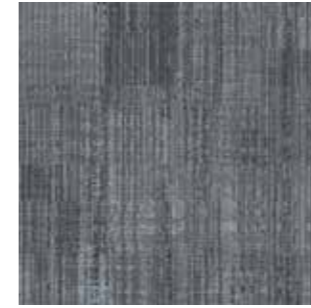
SHL218-188 CROWN

Shadowbox



SHB153-154 HINT

Shardlines



SHL153-154 HINT

Shardlines



SHL180-153 STEAM



Shardlines in Crown(left), Shadowbox and Shardlines in Hint, Shardlines in Steam(right), monolithic installation

Shadowbox

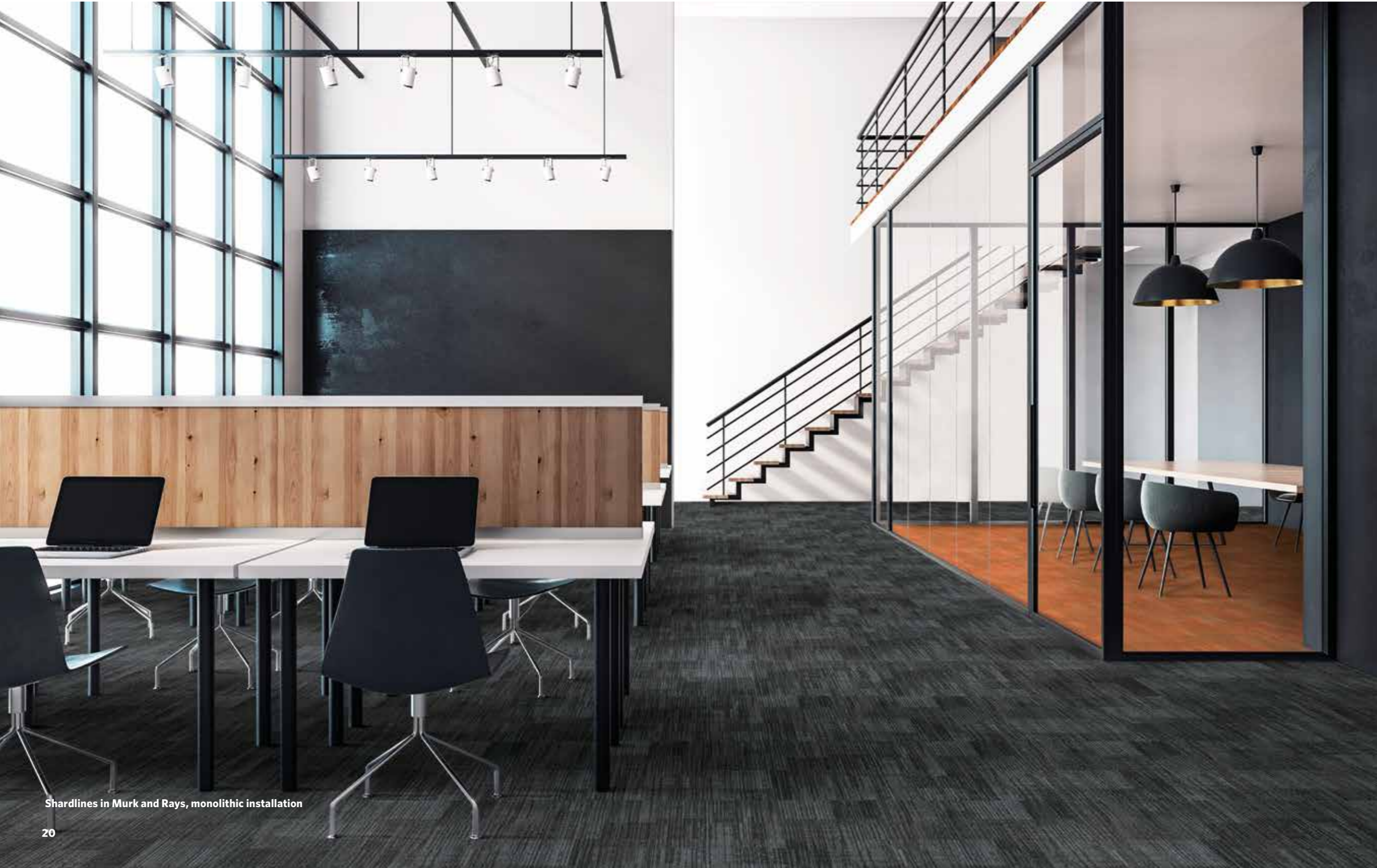


SHL154-119 MURK

Shardlines



SHL128-189 RAYS

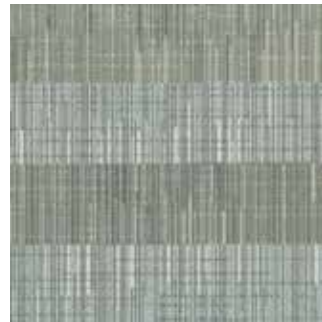


Shardlines in Murk and Rays, monolithic installation

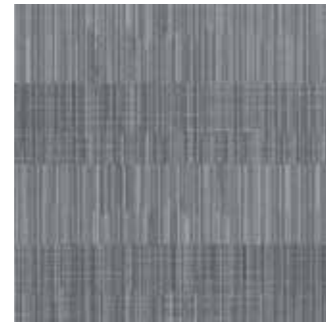


COLORLINE

Shadowbox



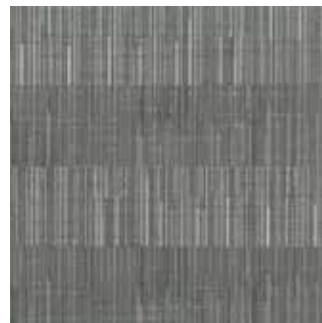
SHB209-218 OPAQUE



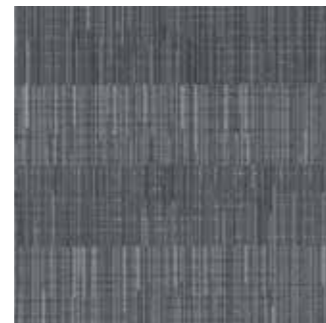
SHB180-153 STEAM



SHB218-188 CROWN



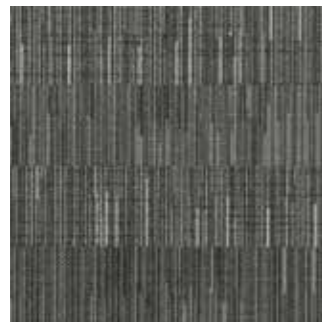
SHB225-120 SHAPE



SHB153-154 HINT



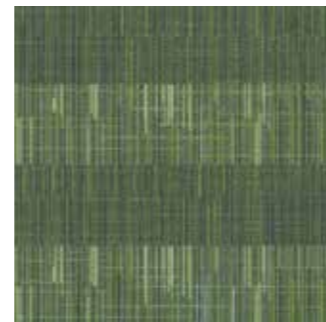
SHB128-189 RAYS



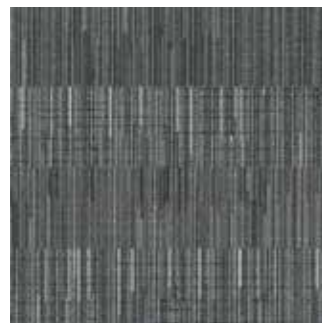
SHB165-13 PHANTOM



SHB13-154 OUTLINE



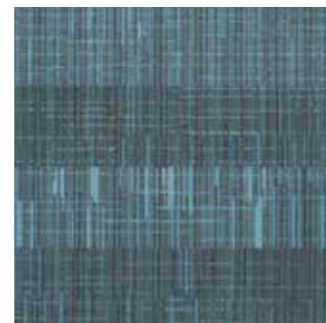
SHB118-141 TREE SHADE



SHB250-260 CONTOUR



SHB154-119 MURK



SHB118-140 MOONLIGHT

Shardlines



SHL209-218 OPAQUE



SHL180-153 STEAM



SHL218-188 CROWN



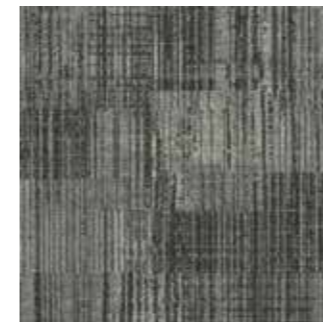
SHL225-120 SHAPE



SHL153-154 HINT



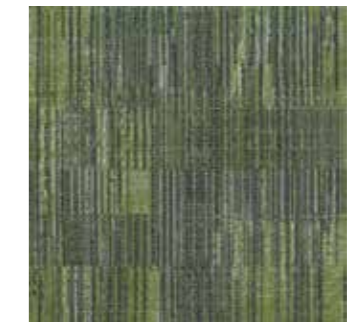
SHL128-189 RAYS



SHL165-13 PHANTOM



SHL13-154 OUTLINE



SHL118-141 TREE SHADE



SHL250-260 CONTOUR



SHL154-119 MURK



SHL118-140 MOONLIGHT



Out of the Shadows 2.0

Shadowbox / Shardlines

SPECIFICATION

- Construction** - Tufted, Textured Loop
- Tile Size** - 50cm X 50cm (19.7" X 19.7")
- Face Fiber** - 100% Milliken Certified Nylon
- Dye Method** - Millitron®
- Standard Backing** - PVC-Free WellBAC™ Function
Available with TractionBack®
- Nominal Total Thickness** - 5.8 mm AVG.
- Stain Repel/Stain Resist/Soil Release** - StainSmart®
- Flammability** - ≥ 0.45 (Class I)
- Texture Appearance Retention Rating (TARR)** - Heavy
- Indoor Air Quality - CRI Green Label Plus™**
GLP3210, Carpet Category 6Y

技术指标

- 结构** - 簇绒织造圈绒结构
- 产品尺寸** - 50厘米 X 50厘米 (19.7 X 19.7英寸)
- 表层纤维** - 100% 美利肯认证尼龙
- 染色技术** - Millitron® 电脑数码针染
- 标准底垫** - 不含PVC之 WellBAC™ Function 弹性底背
可选装 TractionBack® 免胶
- 额定总厚度** - 5.8 毫米 平均
- 抗污/防污/去污** - StainSmart®
- 阻燃性** - ≥ 0.45 (一级)
- 外观保持等级 (TARR)** - 频繁商业使用
- 室内空气质量 CRI Green Label Plus™** - GLP3210, 地毯类别 6Y

Installation Method

安装方式:



Monolithic
同一方向安装

TractionBack®

Simplify your modular installation with Milliken's patented TractionBack®, an innovative backing system that is faster, more cost efficient, and environmentally superior to wet adhesives and peel-and-stick carpet tile.

www.millikencarpet.com



Declare.

China
North & North West &
South West Of China
T +86 10 6465 1206
T +86 133 0101 8460
South of China &
HK & Macau
T +86 181 1743 0032
East & Central of China
T +86 21 6145 1758

India
Bangalore
T +91 98408 98963
Delhi
T +91 95010 11800
Hyderabad
T +91 99631 64059
Mumbai
T +91 98926 00362

Rest of Asia
Manila

Seoul

Singapore
T +65 6593 1301
Tokyo
T +81 3 5203 8406
Jakarta
T +6221 2960 7222

