



LIVING FACADES

Field / Lattice / Trellies / Foliage

Milliken

A photograph of a modern building facade covered in lush green climbing plants. The plants are dense and vibrant, cascading down the side of the building. A balcony with a metal railing is visible in the upper middle section. The overall scene is bright and natural, suggesting a sustainable or green building design.

By observing the natural world and finding inspiration in unexpected places, designs were created that are both beautiful and functional, and that reflect the beauty and complexity of the world around us.

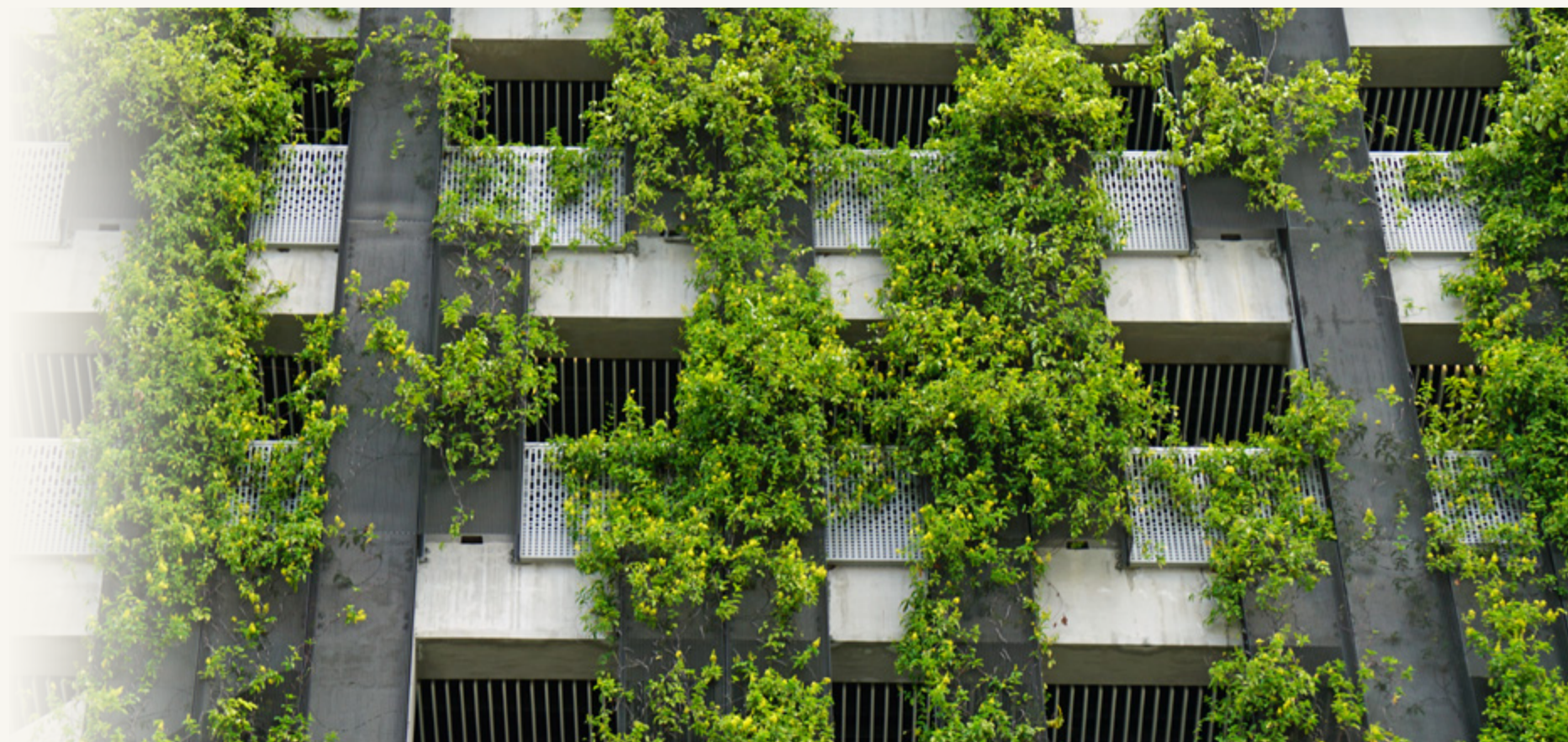


GREEN FACADES

In recent years, there has been a strong demand for ecological and sustainable construction methods, which has brought renewed attention to an architectonic topic that has long been known: **the greening of building facades**.

The benefits of planting vegetation on building facades are numerous. Plants absorb CO₂, filter out dust and dirt, dampen noise exposure, and provide natural building cooling through shadow-casting and water evaporation.

A modular Façade/trellis system can facilitate and encourage plant growth, resulting in an unforgettable look. Wall-mounted or freestanding Wire Mesh panel grids form a “green façade” that can transform spaces while enhancing the environment.





Introducing
LIVING FACADES
Inspired by Nature's Architecture

Inspired by this green facade concept, we decided to create a similar effect on the floor. We took the layered and arranged system of different plants as the basis for designing a repeating pattern in modular carpet tile. By arranging these tiles in a modular system, one can create a pattern that mimics the layered and overlapping growth of a vertical garden. This approach allows for a unique and visually stunning design while promoting sustainability in the built environment.



LIVING FACADES

PATTERNS

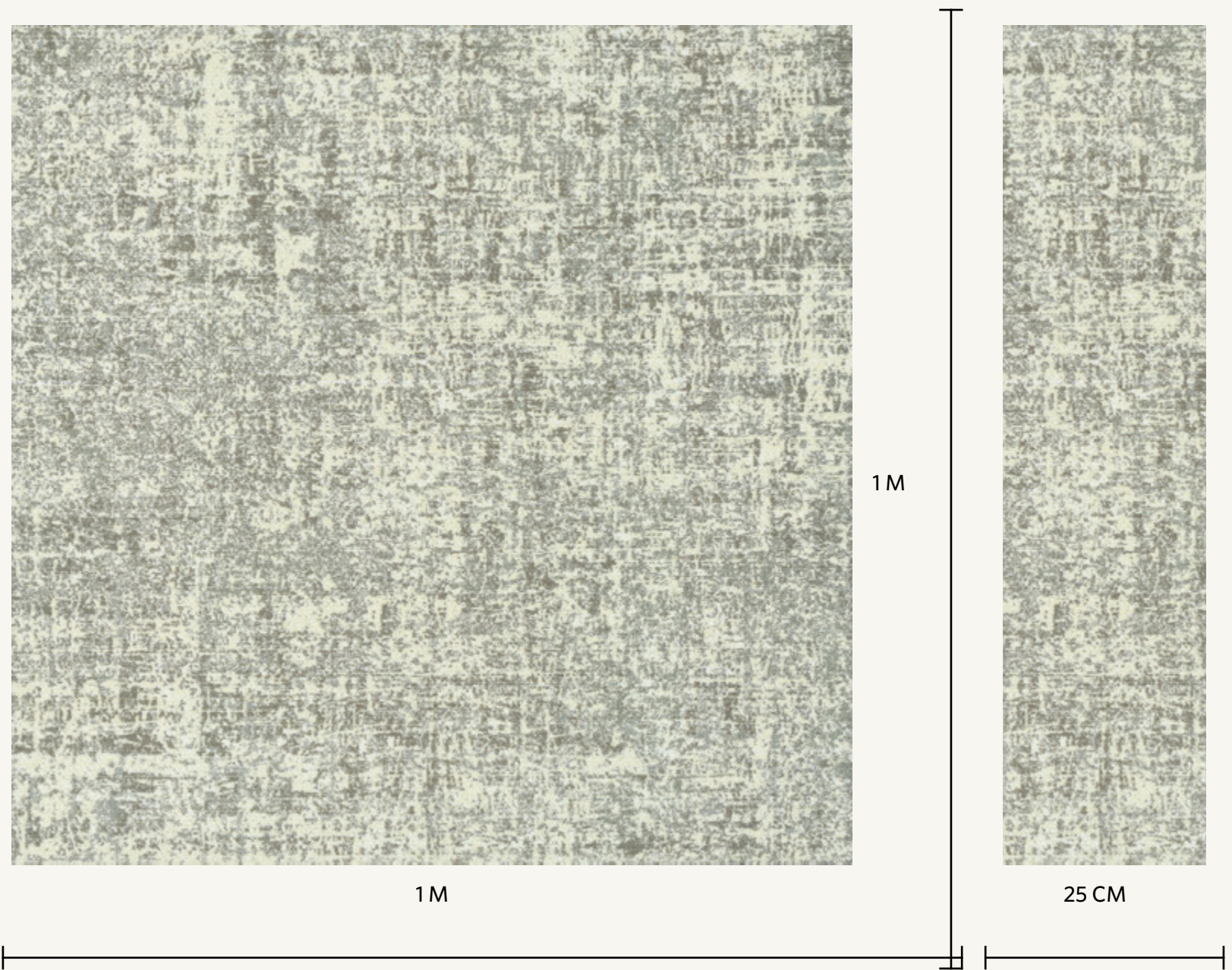
The four patterns - Field, Lattice, Trellis, and Foliage - are inspired by green facades, where plants are grown on the exterior of buildings to provide numerous benefits such as air purification, thermal insulation, and aesthetic enhancement.

The Living Facades collection mimic the organic shapes and forms found in green facades and provide a sustainable design solution for interior spaces.

————— Toggle icons explore 4 patterns —————

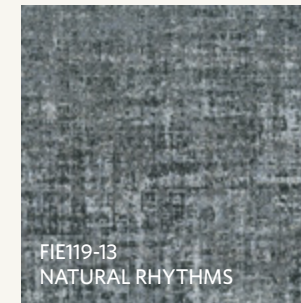


The field pattern is inspired by the uniform and seamless appearance of a green wall. It creates a clean and minimalist look that is well-suited for modern and contemporary spaces.





Field in Mindful Practice FIE235-208, monolithic installation



FIE119-13
NATURAL RHYTHMS



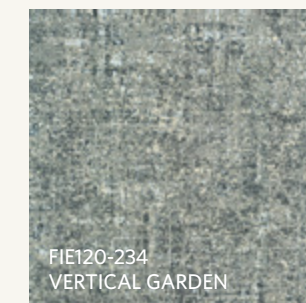
FIE178-145
DEEPER CONNECTION



FIE10-254
SEASONAL CYCLE



FIE154-153
LOCAL CLIMATE



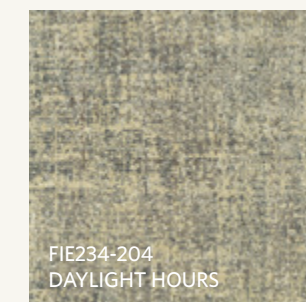
FIE120-234
VERTICAL GARDEN



FIE174-180
BOTANICAL STUDIES



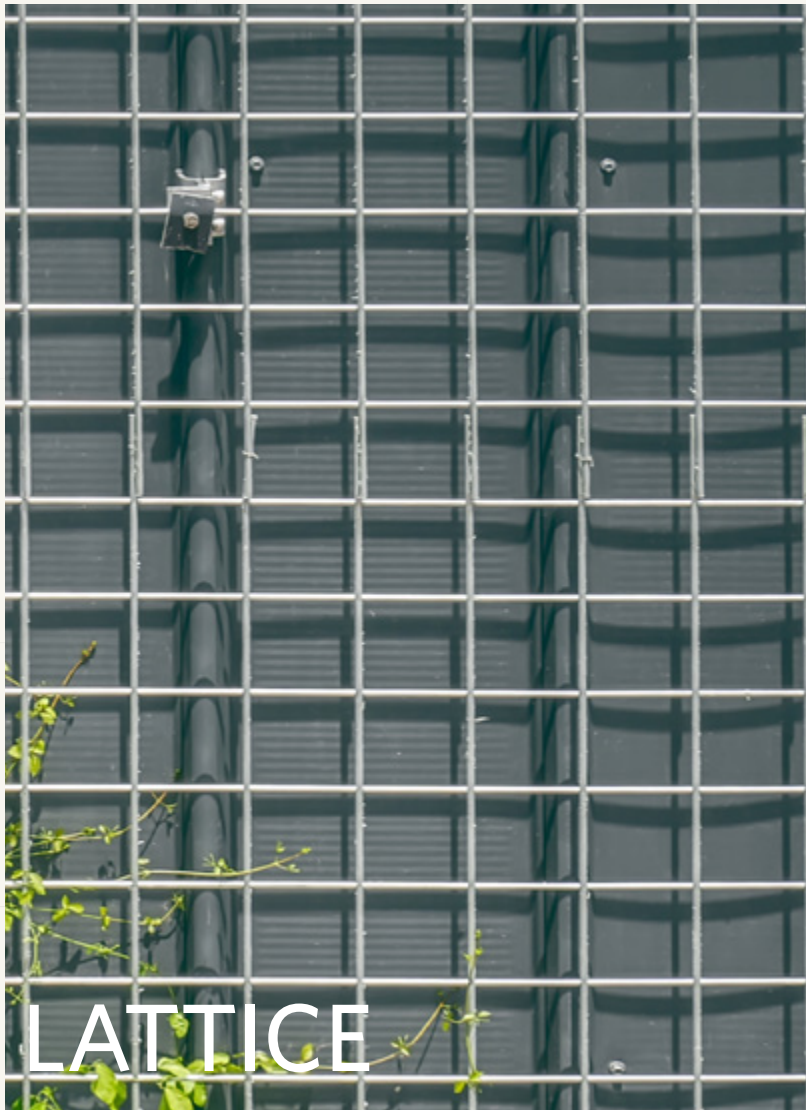
FIE235-208
MINDFUL PRACTICE



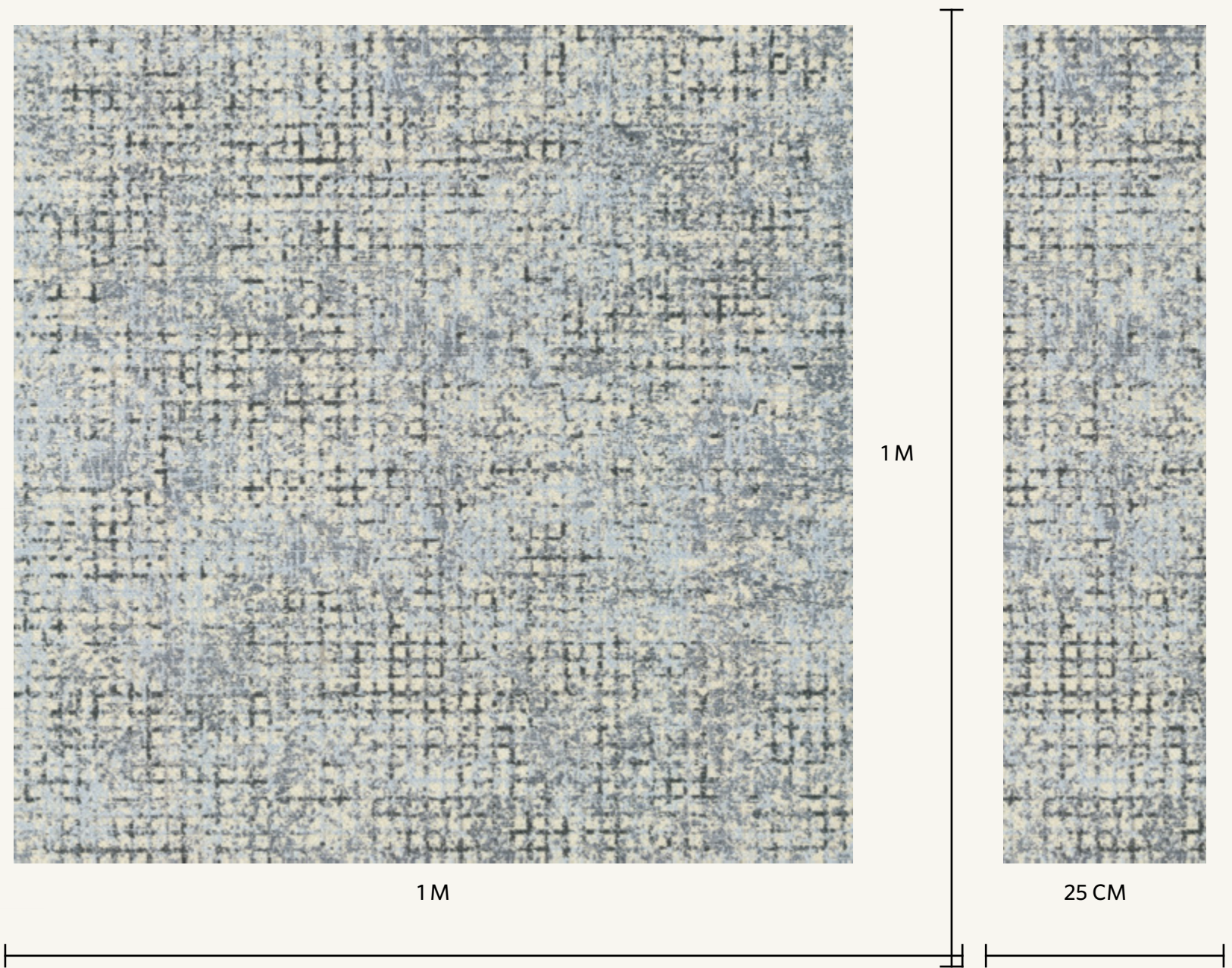
FIE234-204
DAYLIGHT HOURS

LIVING FACADES
FIELD

The color line
inspired by
A living cycle of plant



Lattice is the grid-like structure of a trellis system that supports the growth of climbing plants. This pattern adds a subtle visual interest to the floor and is ideal for creating structure.





(from right to left)
Lattice in Botanical Studies LAC174-180,
Trellis in Botanical Studies TRE162-174-180,
Foliage in Botanical Studies FOE174-180-200,
monolithic installation



LAC119-13
NATURAL RHYTHMS



LAC178-145
DEEPER CONNECTION



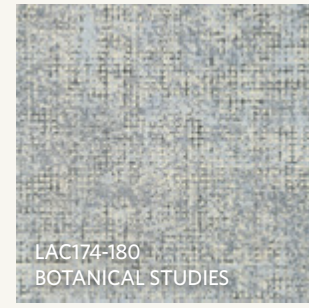
LAC10-254
SEASONAL CYCLE



LAC154-153
LOCAL CLIMATE



LAC120-234
VERTICAL GARDEN



LAC174-180
BOTANICAL STUDIES



LAC235-208
MINDFUL PRACTICE



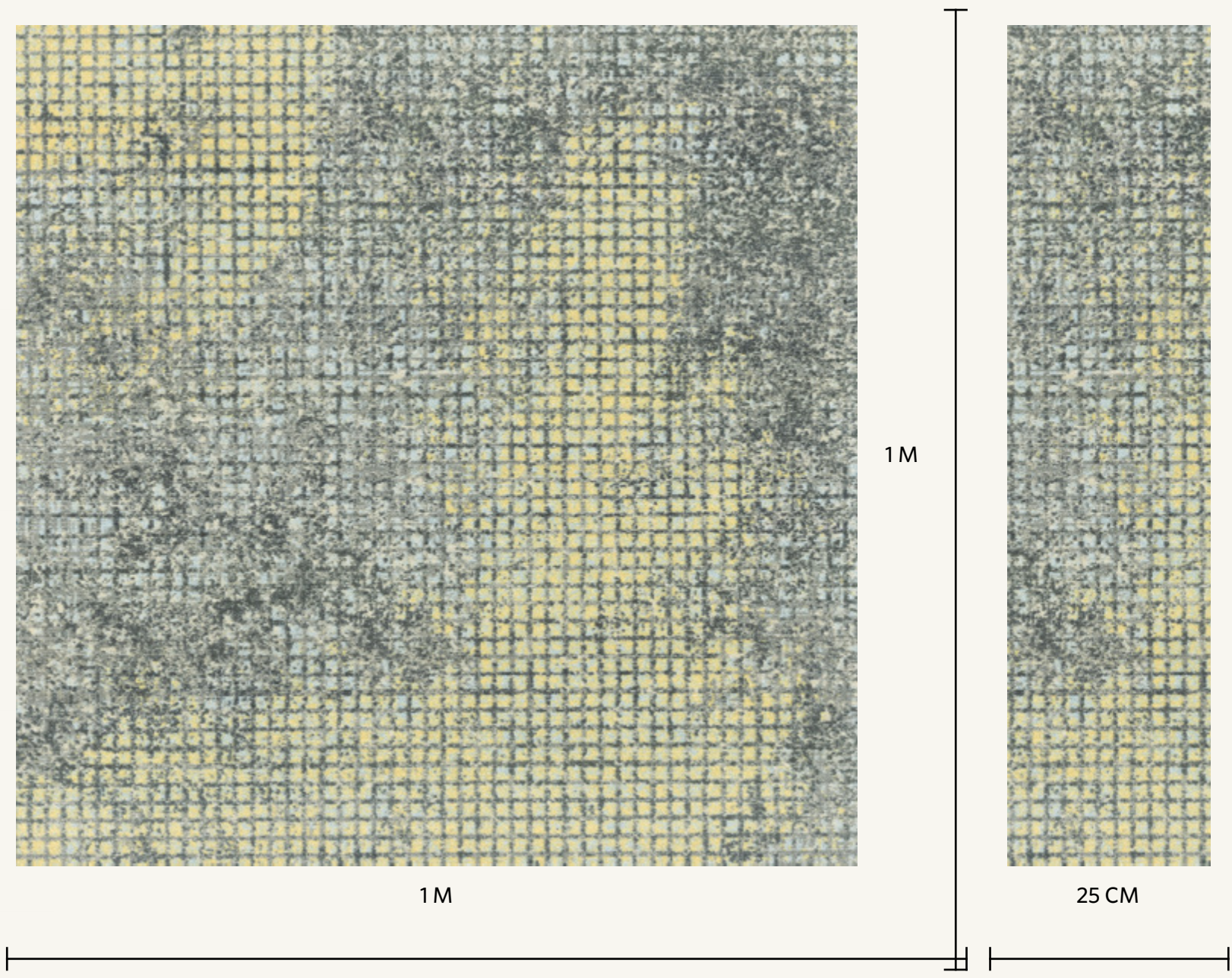
LAC234-204
DAYLIGHT HOURS

LIVING FACADES LATTICE

The color line
inspired by
A living cycle of plant



Trellis is the extension to Lattice, where spurs of color are introduced on the grid system. This illustrates the diagonal growth of climbing plants on a trellis system. The introduction of the color spurs adds an extra layer of complexity to the pattern, mimicking the organic growth of plants on a trellis.





Trellis in Vertical Fall TRE189-120-234 and Vertical Harvest TRE105-120-234, ashlar Installation



TRE140-154-153
LOCAL CLIMATE



TRE243-119-13
NATURAL RHYTHMS



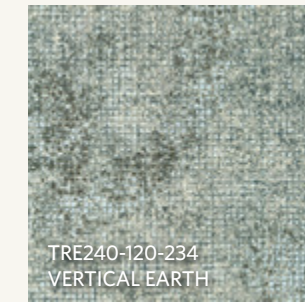
TRE204-178-145
DEEPER CONNECTION



TRE128-10-254
SEASONAL CYCLE



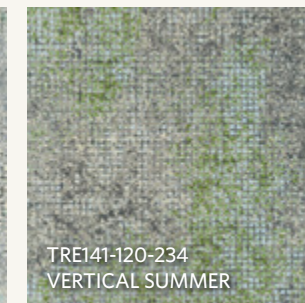
TRE162-174-180
BOTANICAL STUDIES



TRE240-120-234
VERTICAL EARTH



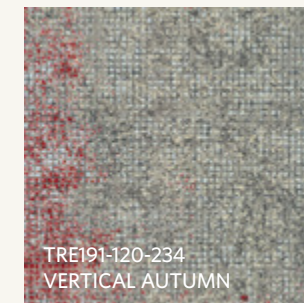
TRE240-120-234
VERTICAL GARDEN



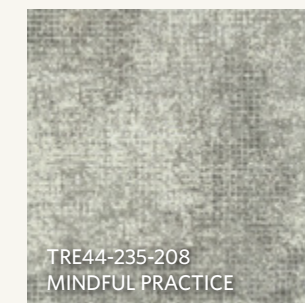
TRE141-120-234
VERTICAL SUMMER



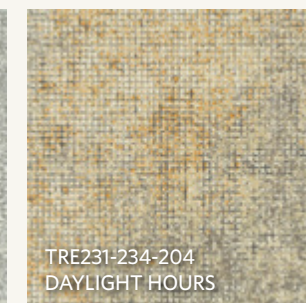
TRE189-120-234
VERTICAL FALL



TRE191-120-234
VERTICAL AUTUMN



TRE44-235-208
MINDFUL PRACTICE



TRE231-234-204
DAYLIGHT HOURS



TRE105-120-234
VERTICAL HARVEST

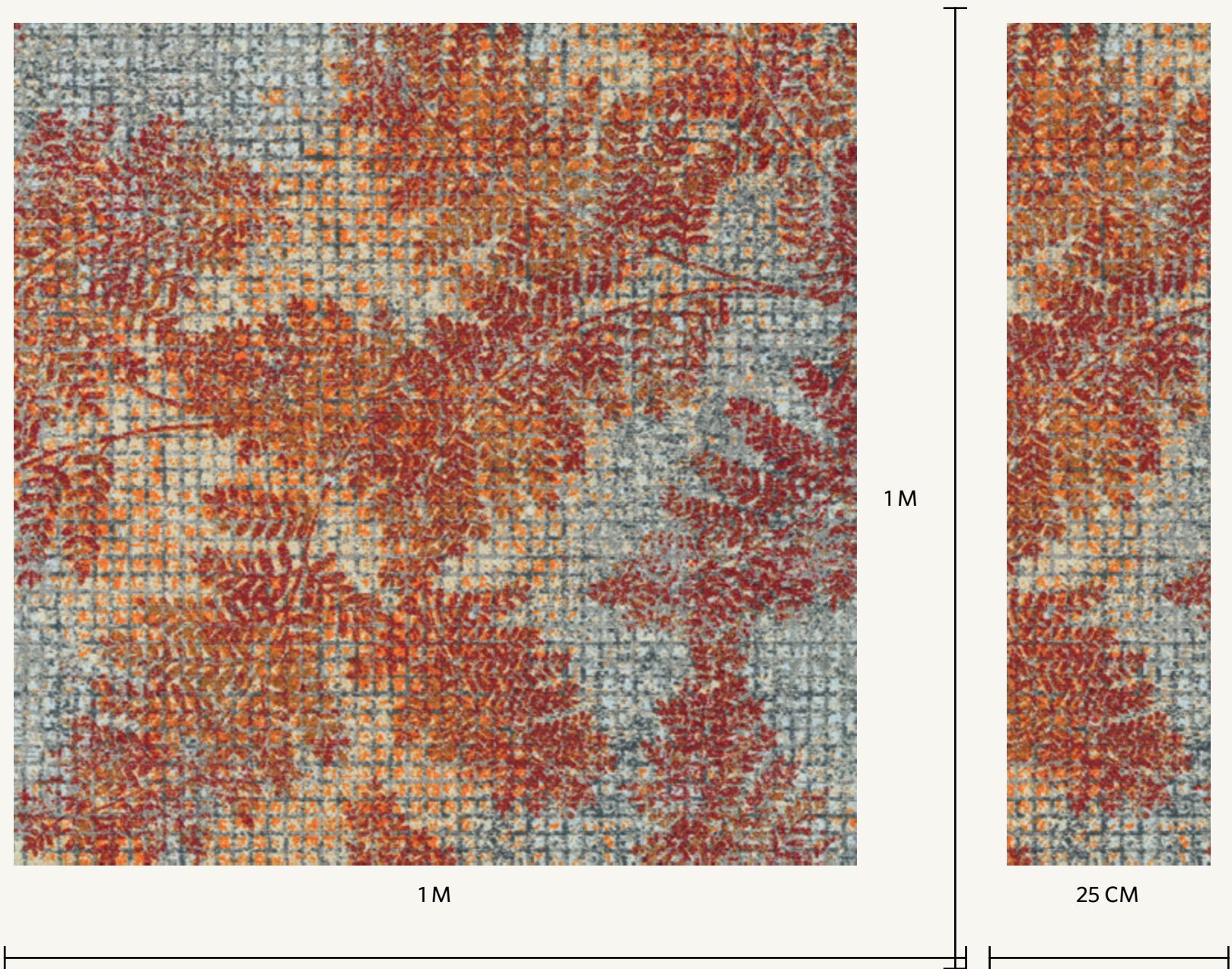
LIVING FACADES TRELLIS

The color line
inspired by
A living cycle of plant

The Trellis pattern is ideal for creating movement and energy in the design while still maintaining a structured and organized appearance.

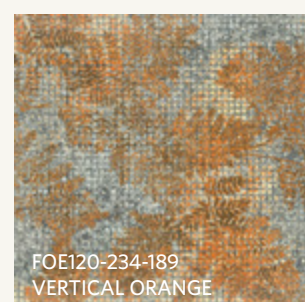
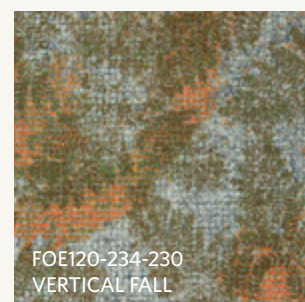
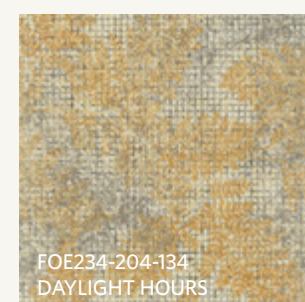
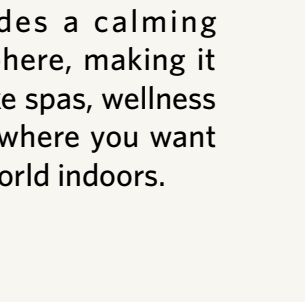
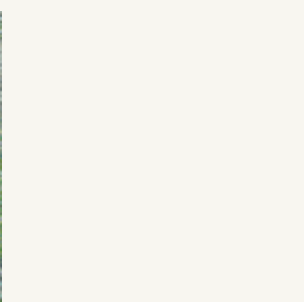
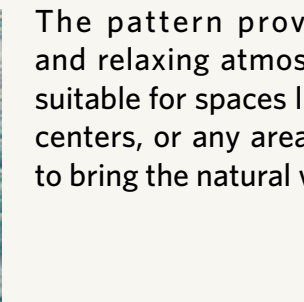
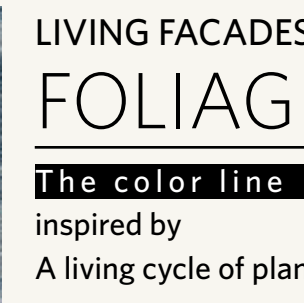
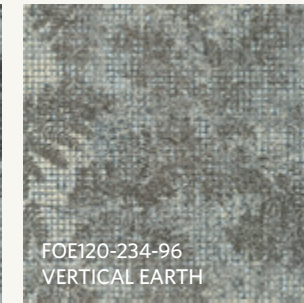
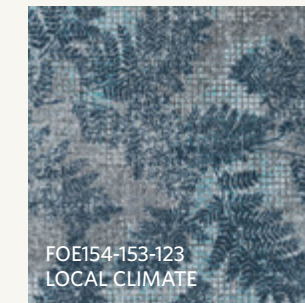


The Foliage pattern builds upon the Trellis pattern, fully integrated with natural shapes and forms of plants found in a green facade. Through its variety of colors, layers, and textures you can create a lush, natural look on the floor. The Foliage pattern is ideal for creating a sense of nature within a space and can be used as accent rugs or to cover the entire floor.





Foliage in Vertical Autumn FOE120-234-290, monolithic installation



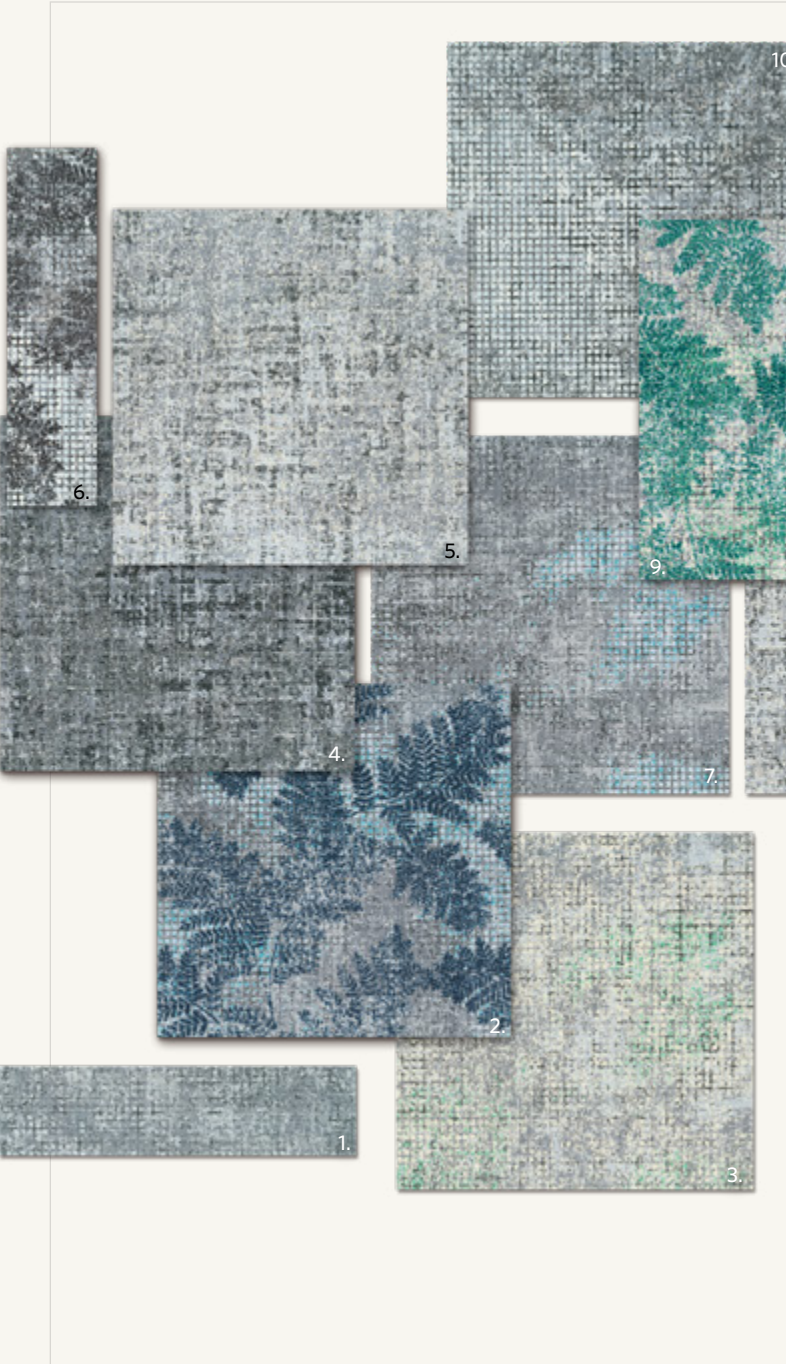
LIVING FACADES FOLIAGE

The color line
inspired by
A living cycle of plant

The pattern provides a calming and relaxing atmosphere, making it suitable for spaces like spas, wellness centers, or any area where you want to bring the natural world indoors.

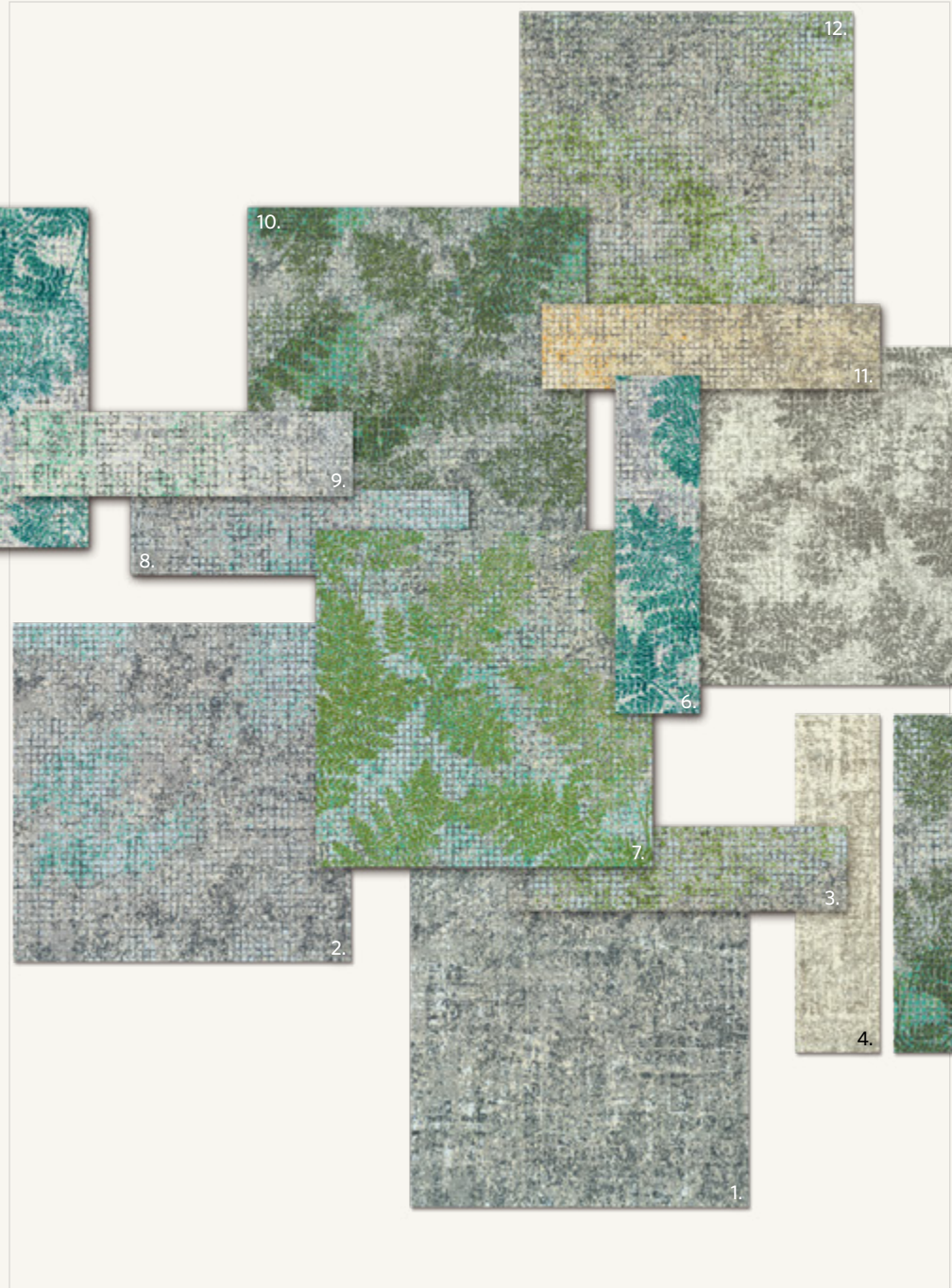
LIVING FACADES

The color line
inspired by
A living cycle of plant



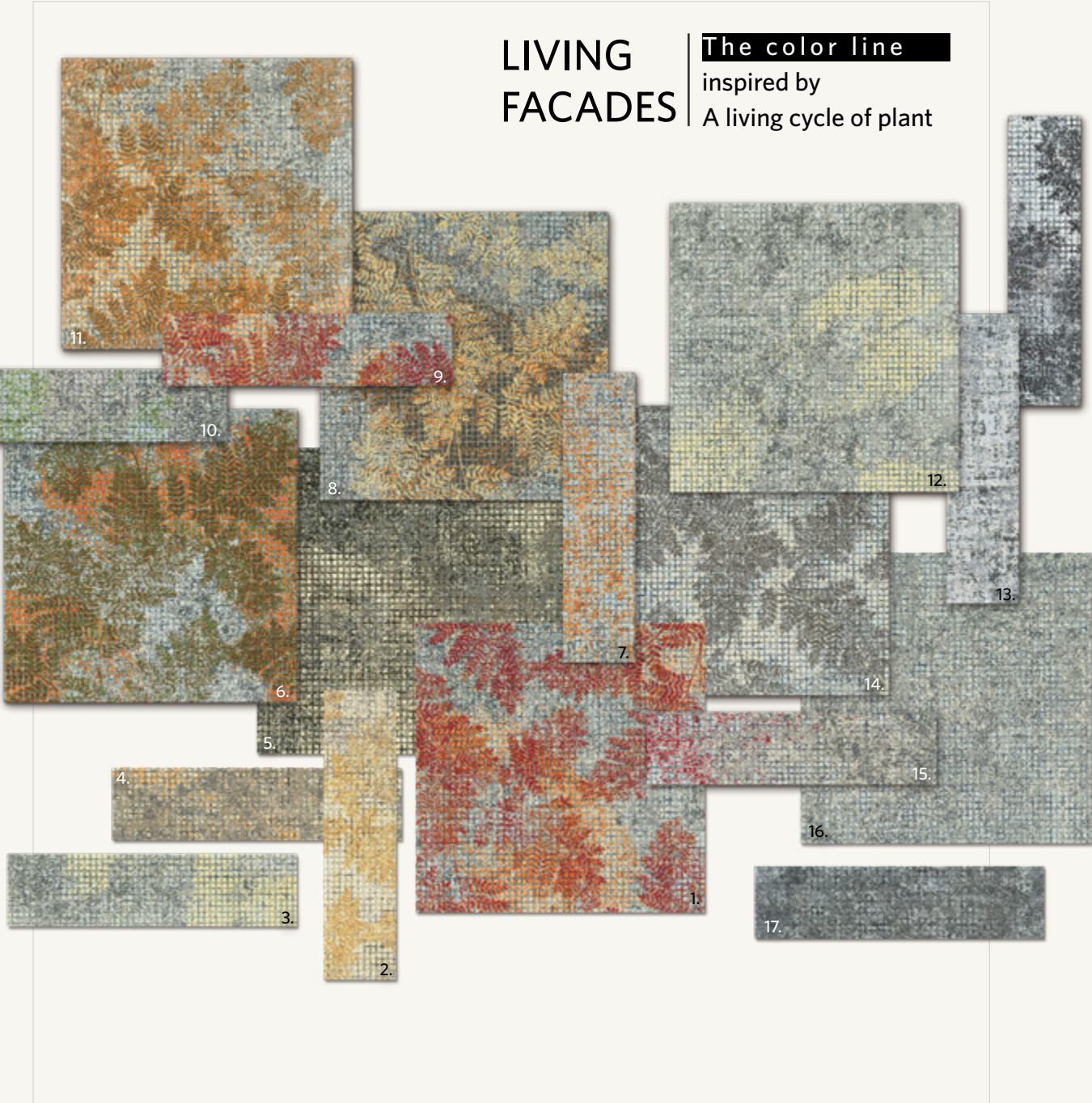
Winter

- 1. LAC154-153 Local Climate
- 2. FOE154-153-123 Local Climate
- 3. TRE162-174-180 Botanical Studies
- 4. FIE119-13 Natural Rhythms
- 5. FIE174-180 Botanical Studies
- 6. FOE119-13-133 Natural Rhythms
- 7. TRE140-154-153 Local Climate
- 8. FIE174-180 Botanical Studies
- 9. FOE174-180-200 Botanical Studies
- 10. TRE243-119-13 Natural Rhythms



Spring & Summer

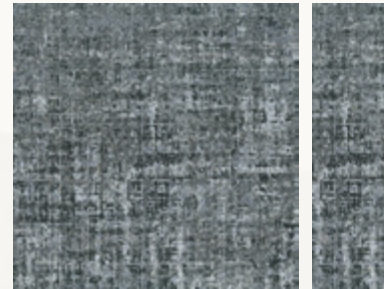
- 1. FIE120-234 Vertical Garden
- 2. TRE240-120-234 Vertical Garden
- 3. TRE141-120-234 Vertical Summer
- 4. FIE235-208 Mindful Practice
- 5. FOE120-234-203 Vertical Summer
- 6. FOE174-180-200 Botanical Studies
- 7. FOE120-234-202 Vertical Garden
- 8. TRE240-120-234 Vertical Garden
- 9. TRE162-174-180 Botanical Studies
- 10. FOE120-234-203 Vertical Summer
- 11. TRE231-234-204 Daylight Hours
- 12. TRE141-120-234 Vertical Summer
- 13. FOE235-208-143 Mindful Practice



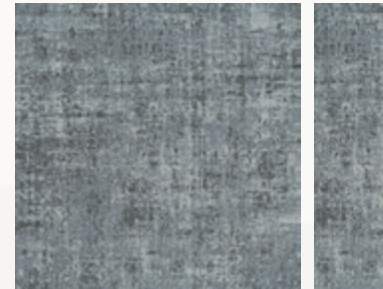
Autumn

- 1. FOE120-234-290 Vertical Autumn
- 2. FOE234-204-134 Daylight Hours
- 3. TRE105-120-234 Vertical Harvest
- 4. TRE128-10-254 Seasonal Cycle
- 5. TRE204-178-145 Deeper Connection
- 6. FOE120-234-230 Vertical Fall
- 7. TRE189-120-234 Vertical Fall
- 8. FOE120-234-188 Vertical Harvest
- 9. FOE120-234-290 Vertical Autumn
- 10. TRE141-120-234 Vertical Summer
- 11. FOE120-234-189 Vertical Orange
- 12. TRE105-120-234 Vertical Harvest
- 13. FIE174-180 Botanical Studies
- 14. FOE120-234-96 Vertical Earth
- 15. TRE191-120-234 Vertical Autumn
- 16. LAC120-234 Vertical Garden
- 17. LAC119-13 Natural Rhythms

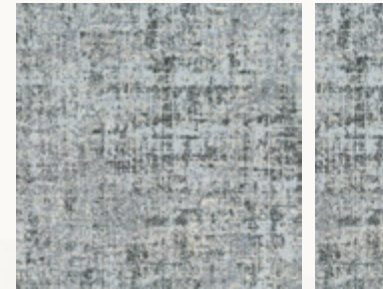
Field



FIE119-13
NATURAL RHYTHMS



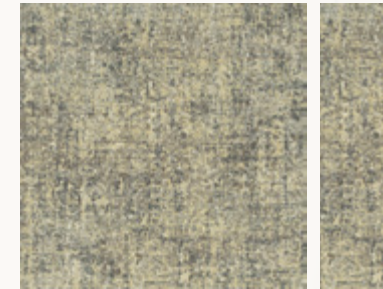
FIE154-153
LOCAL CLIMATE



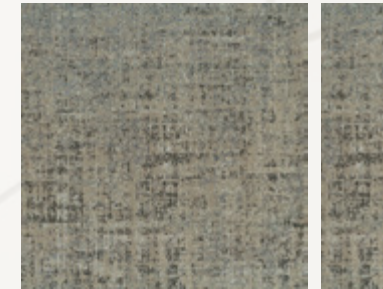
FIE174-180
BOTANICAL STUDIES



FIE235-208
MINDFUL PRACTICE



FIE234-204
DAYLIGHT HOURS

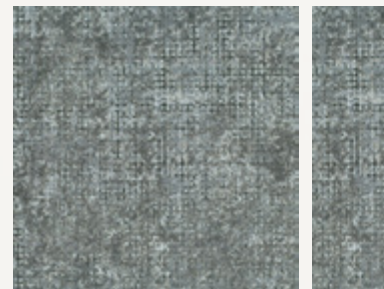


FIE10-254
SEASONAL CYCLE

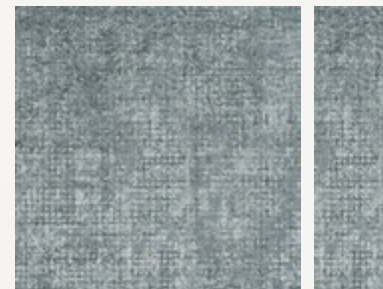


FIE178-145
DEEPER CONNECTION

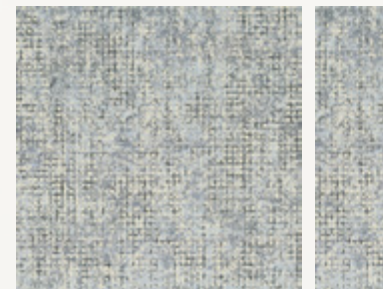
Lattice



LAC119-13
NATURAL RHYTHMS



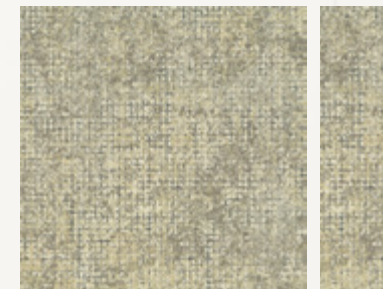
LAC154-153
LOCAL CLIMATE



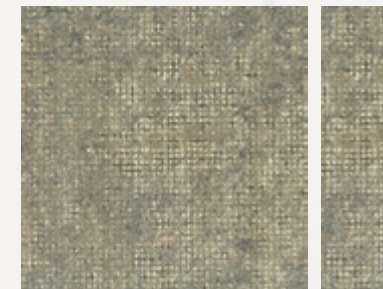
LAC174-180
BOTANICAL STUDIES



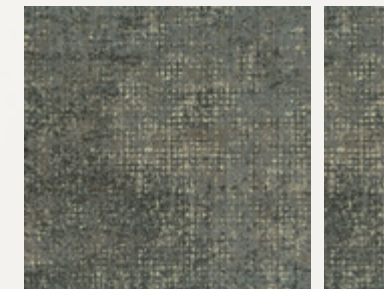
LAC235-208
MINDFUL PRACTICE



LAC234-204
DAYLIGHT HOURS

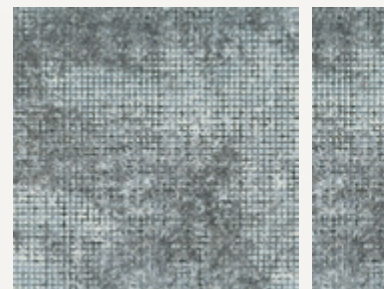


LAC10-254
SEASONAL CYCLE

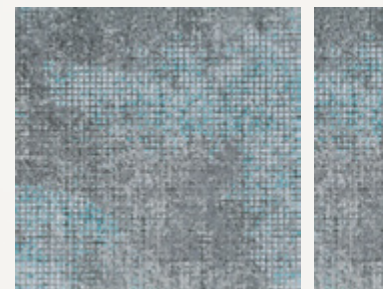


LAC178-145
DEEPER CONNECTION

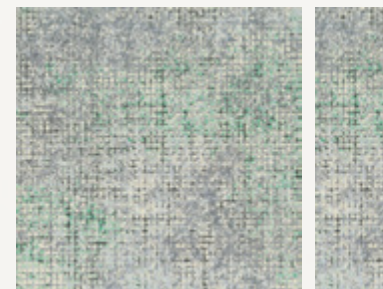
Trellis



TRE243-119-13
NATURAL RHYTHMS



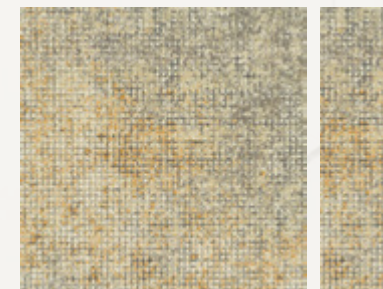
TRE140-154-153
LOCAL CLIMATE



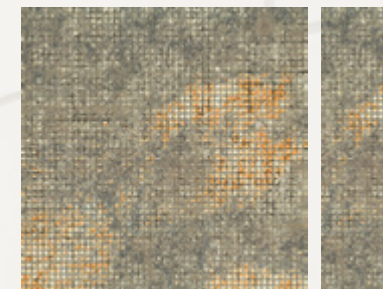
TRE162-174-180
BOTANICAL STUDIES



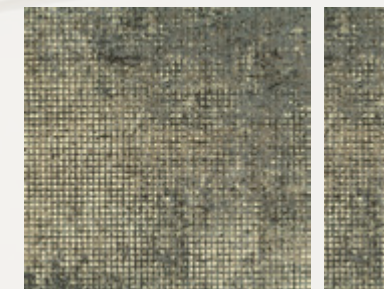
TRE44-235-208
MINDFUL PRACTICE



TRE231-234-204
DAYLIGHT HOURS

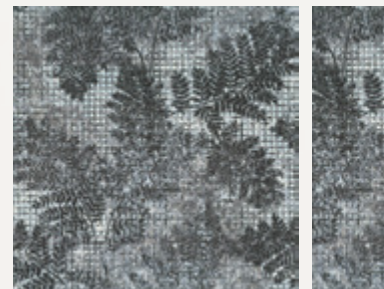


TRE128-10-254
SEASONAL CYCLE



TRE204-178-145
DEEPER CONNECTION

Foliage



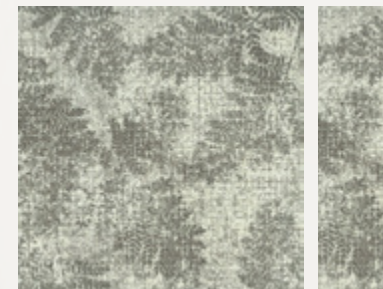
FOE119-13-133
NATURAL RHYTHMS



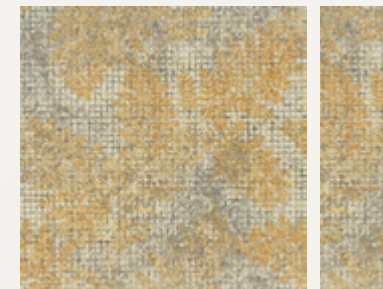
FOE154-153-123
LOCAL CLIMATE



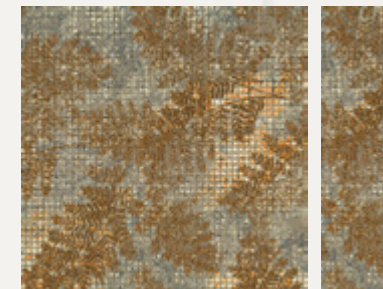
FOE174-180-200
BOTANICAL STUDIES



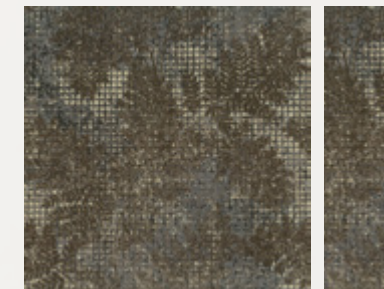
FOE235-208-143
MINDFUL PRACTICE



FOE234-204-134
DAYLIGHT HOURS

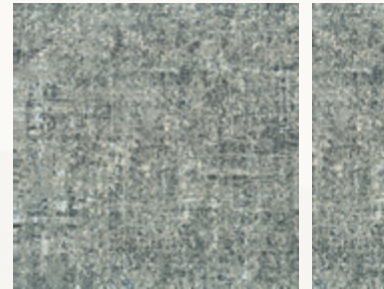


FOE10-254-98
SEASONAL CYCLE



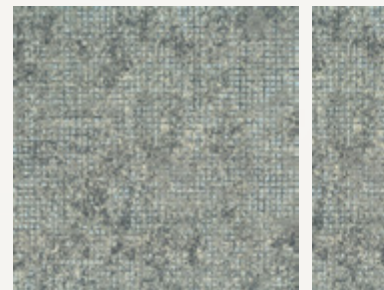
FOE178-145-10
DEEPER CONNECTION

Field



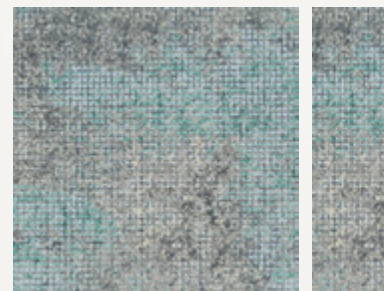
FIE120-234
VERTICAL GARDEN

Lattice

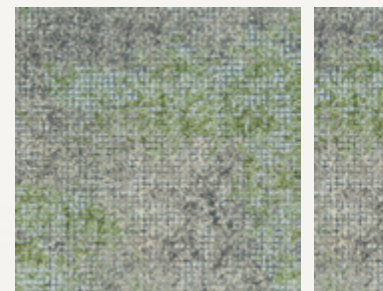


LAC120-234
VERTICAL GARDEN

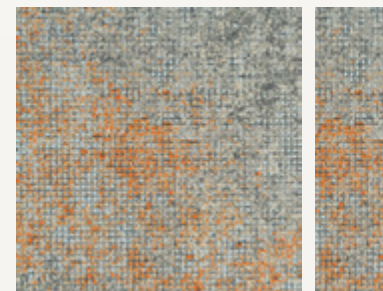
Trellis



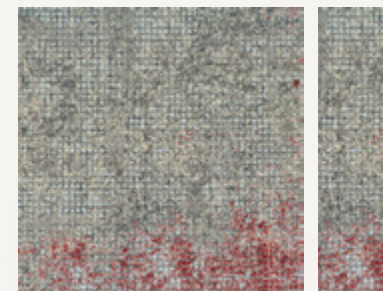
TRE240-120-234
VERTICAL GARDEN



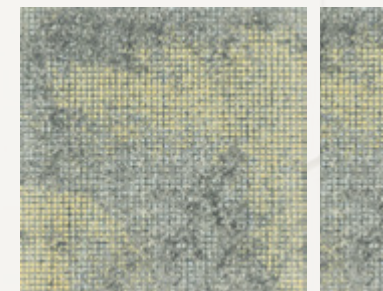
TRE141-120-234
VERTICAL SUMMER



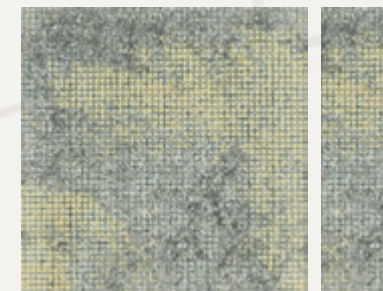
TRE189-120-234
VERTICAL FALL



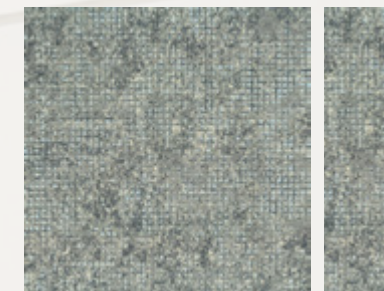
TRE191-120-234
VERTICAL AUTUMN



TRE105-120-234 *
VERTICAL HARVEST

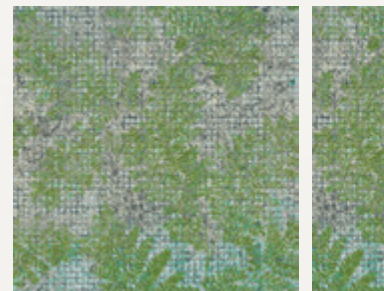


TRE105-120-234 *
VERTICAL HARVEST

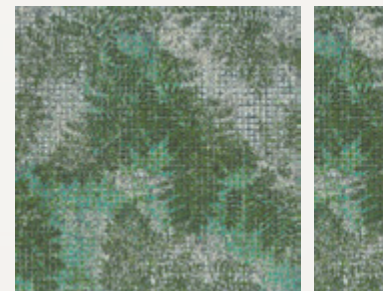


TRE204-120-234
VERTICAL EARTH

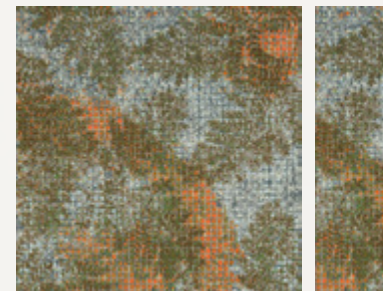
Foliage



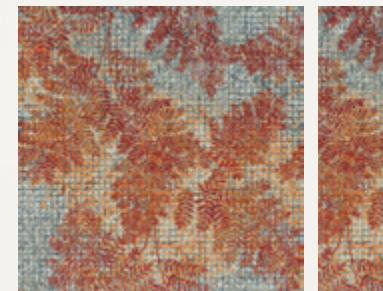
FOE120-234-202
VERTICAL GARDEN



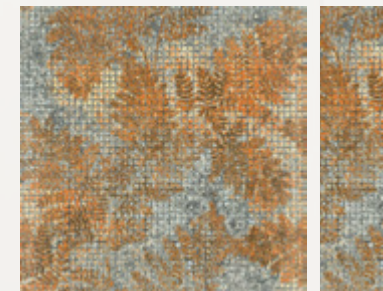
FOE120-234-203
VERTICAL SUMMER



FOE120-234-230
VERTICAL FALL



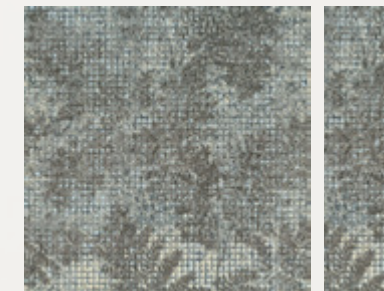
FOE120-234-290
VERTICAL AUTUMN



FOE120-234-189
VERTICAL ORANGE

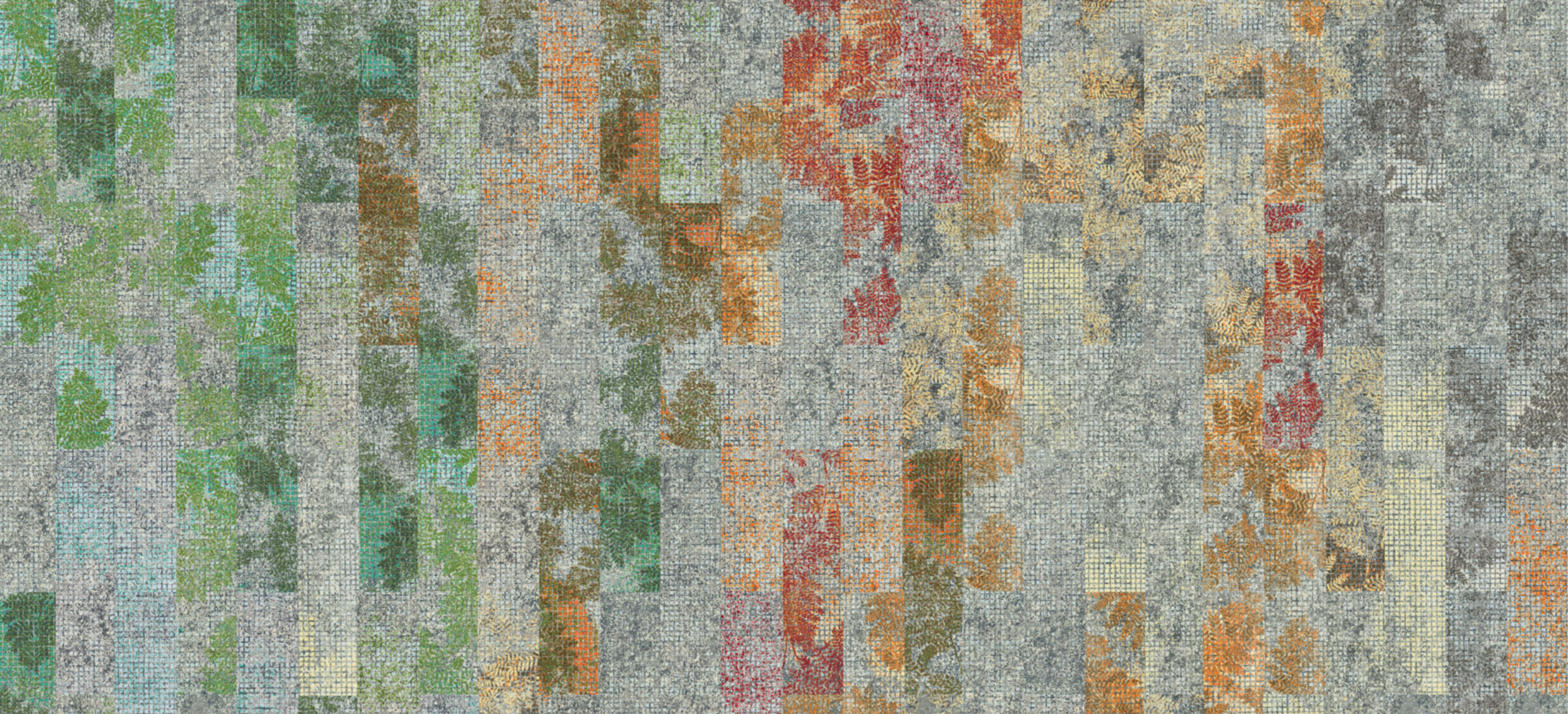


FOE120-234-188
VERTICAL HARVEST




FOE120-234-96
VERTICAL EARTH

* TRE105-120-234 is a soft transition to
FOE120-234-189 and FOE120-234-188

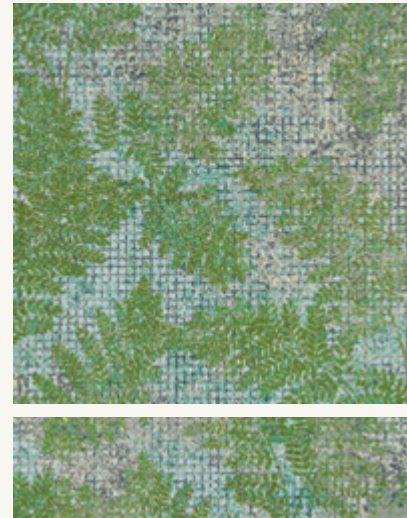


LIVING FACADES
COLORLINE

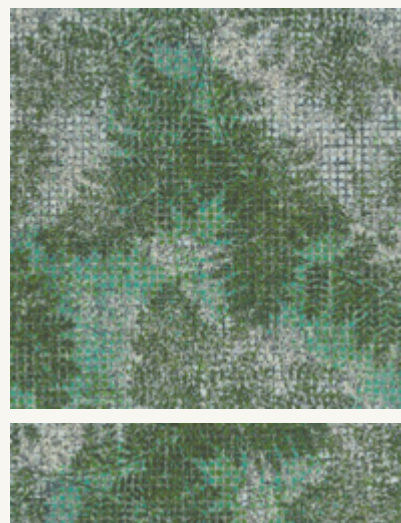
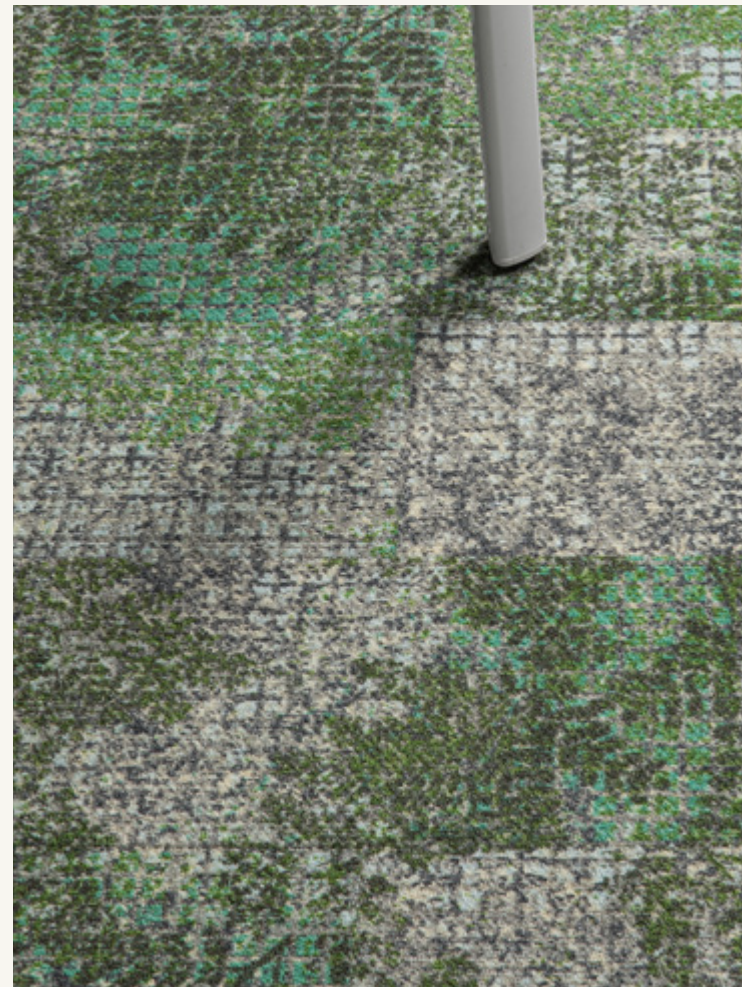




Foliage in Vertical Garden FOE120-234-202 and
Vertical Summer FOE120-234-203,
Trellis in Vertical Garden TRE240-120-234
and Vertical Summer TRE141-120-234, custom installation



Foliage in Vertical Garden
FOE120-234-202



Foliage in Vertical Summer
FOE120-234-203



Foliage in Vertical Garden FOE120-234-202 and
Vertical Summer FOE120-234-203, custom installation

BOTANICAL STUDIES

Foliage in Botanical Studies
FOE174-180-200,
Trellis in Botanical Studies
TRE162-174-180,
Lattice in Botanical Studies
LAC174-180,
monolithic installation

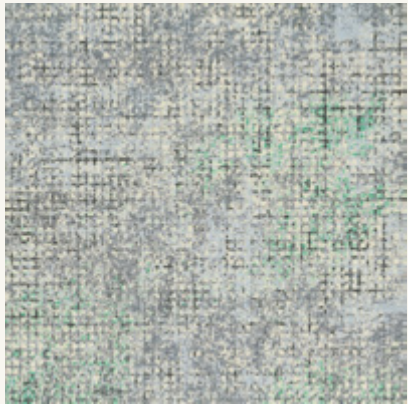




Lattice in Botanical Studies LAC174-180
Foliage in Botanical Studies FOE174-180-200, monolithic installation



Foliage in Botanical Studies
FOE174-180-200



Trellis in Botanical Studies
TRE162-174-180



Lattice in Botanical Studies
LAC174-180



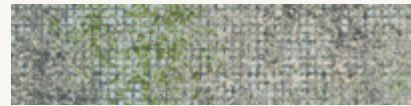
Foliage in Botanical Studies FOE174-180-200,
Trellis in Botanical Studies TRE162-174-180,
Lattice in Botanical Studies LAC174-180,
monolithic installation

Lattice in Vertical Garden,
Trellis in Vertical Garden,
Foliage in Vertical Garden,
Trellis in Vertical Summer,
Foliage in Vertical Summer,
Trellis in Vertical Fall,
Foliage in Vertical Fall,
Foliage in Vertical Orange,
Trellis in Vertical Harvest,
Foliage in Vertical Harvest,
ashlar installation

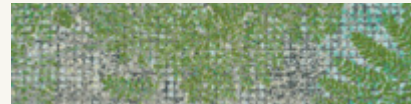




Lattice in Vertical Garden
LAC120-234



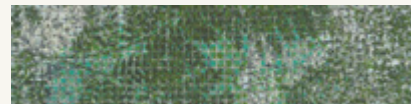
Trellis in Vertical Garden
TRE240-120-234



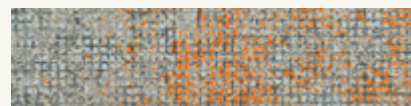
Foliage in Vertical Garden
FOE120-234-202



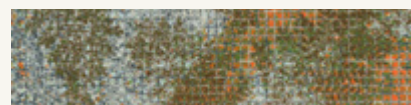
Trellis in Vertical Summer
TRE141-120-234



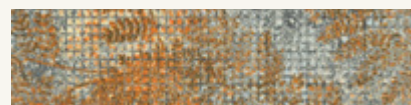
Foliage in Vertical Summer
FOE120-234-203



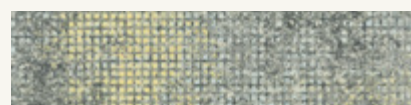
Trellis in Vertical Fall
TRE189-120-234



Foliage in Vertical Fall
FOE120-234-230



Foliage in Vertical Orange
FOE120-234-189



Trellis in Vertical Harvest
TRE105-120-234



Foliage in Vertical Harvest
FOE120-234-188



VERTICAL GARDEN

Lattice in Vertical Garden LAC120-234,
Trellis in Vertical Summer TRE141-120-234,
Foliage in Vertical Summer FOE120-234-203,
Trellis in Vertical Fall TRE189-120-234,
Foliage in Vertical Fall FOE120-234-230,
Foliage in Vertical Orange FOE120-234-188,
ashlar installation



VERTICAL GARDEN

Foliage in Vertical Autumn
FOE120-234-290,
monolithic installation



Foliage in Vertical Autumn FOE120-234-290,
Trellis in Vertical Autumn TRE191-120-234,
Lattice in Vertical Garden LAC120-234,
monolithic and ashlar installation





Trellis in Vertical Harvest
TRE105-120-234



Trellis in Vertical Fall
TRE189-120-234



Foliage in Vertical Orange
FOE120-234-189



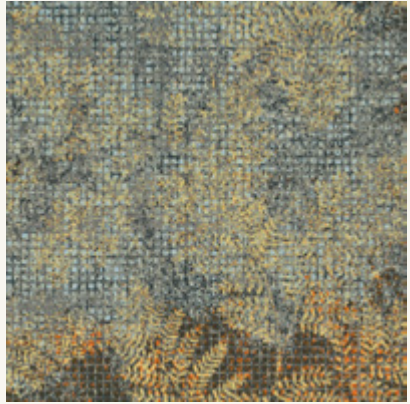
Lattice in Vertical Garden
LAC120-234



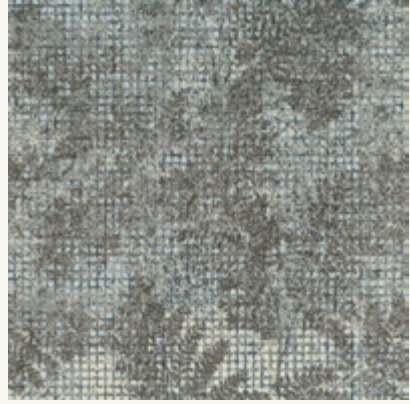
Foliage in Vertical Harvest FOE120-234-189
and Vertical Orange FOE120-234-188,
Lattice in Vertical Garden LAC120-234,
custom installation

FOE120-234-188
VERTICALHARVEST





Foliage in Vertical Harvest
FOE120-234-188



Foliage in Vertical Earth
FOE120-234-96



Foliage in Vertical Harvest FOE120-234-188 and
Vertical Orange FOE120-234-189, monolithic installation

Trellis in Vertical Harvest TRE105-120-234,
Vertical Fall TRE191-120-234
and Vertical Autumn TRE191-120-234,
Foliage in Vertical Harvest FOE120-234-188,
ashlar installation







LOCAL CLIMATE



Foliage in Local Climate
FOE154-153-123



Field in Local Climate FIE154-153,
monolithic installation



Foliage in Local Climate FOE154-153-123,
monolithic installation



MINDFUL PRACTICE



Foliage in Mindful Practice
FOE235-208-143,
monolithic installation





MINDFUL PRACTICE



Foliage in Mindful Practice
FOE235-208-143



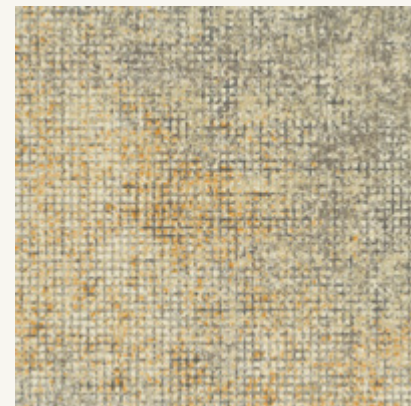
Field in Mindful Practice
FIE235-208



Lattice in Mindful Practice
LAC235-208



SEASONAL CYCLE



Trellis in Daylight Hours
TRE231-234-204



Lattice in Daylight Hours
LAC234-204



Lattice in Daylight Hours LAC234-204
Trellis in Daylight Hours TRE231-234-204,
monolithic installation



(border) Lattice in Mindful Practice LAC235-208, (field) custom pattern, monolithic installation



LAC235-208
MINDFUL PRACTICE



MINDFUL PRACTICE & CUSTOM PATTERN



(border)Lattice in Mindful Practice LAC235-208, (field) custom pattern, monolithic installation

M/PACT™

CARBON NEUTRAL PROGRAM

LIVING FACADES

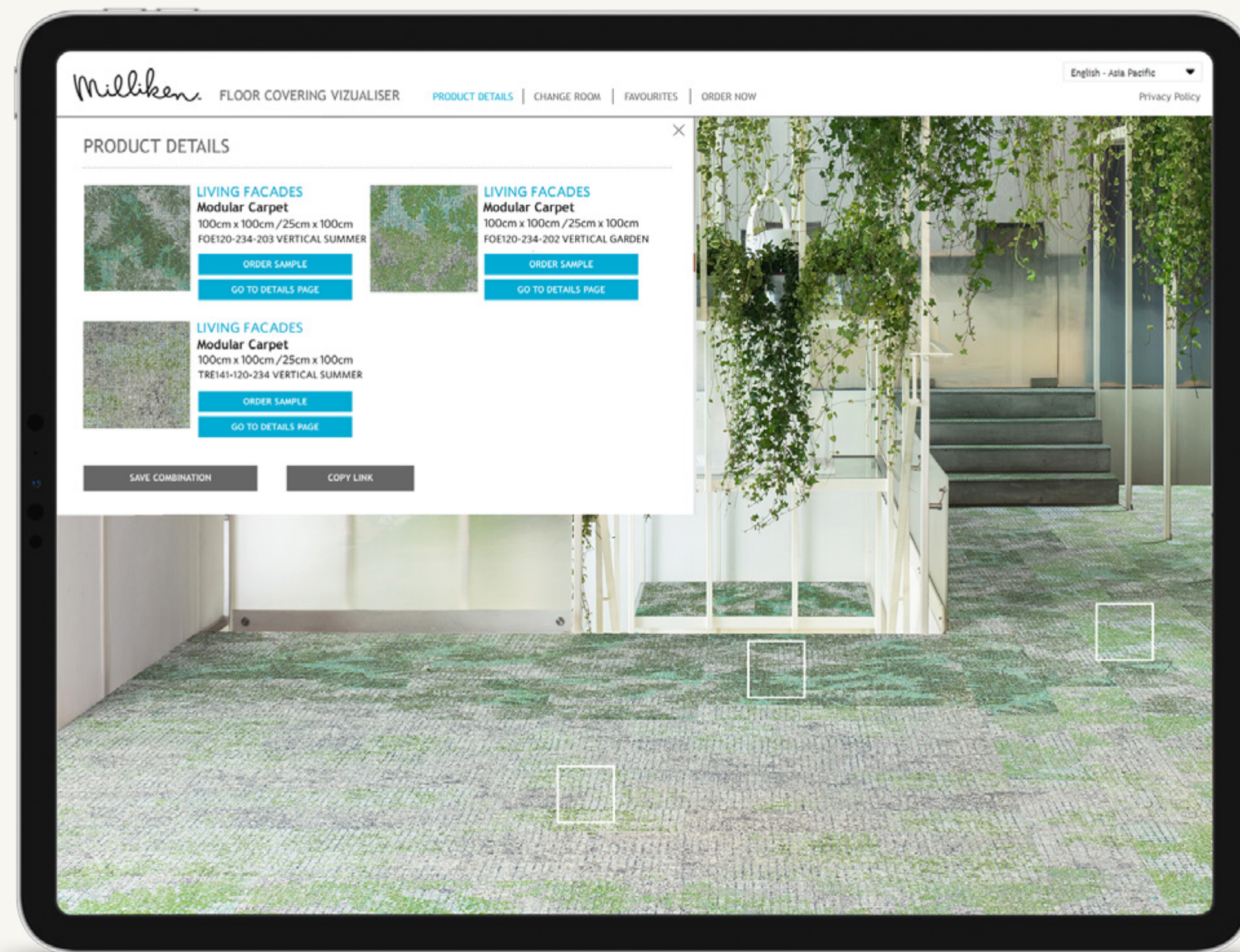
A CARBON NEUTRAL COLLECTION

Climate change is one of the greatest threats facing humanity. Today, our carpet, LVT are carbon neutral everywhere in the world. We invite you to learn more about the significant changes we've made, then let's work together to design a better future.



VIEW LIVING FACADES IN YOUR SPACE

Use the online visualiser to view different layouts of Living Facades. Simply upload a photograph of your space and let the visualiser do the rest.



LIVING FACADES

Field / Lattice / Trellis / Foliage

SPECIFICATION

Construction - Tufted, Textured Loop

Tile Size - 100cm X 100cm
25cm X 100cm

Face Fiber - 100% Milliken Certified Nylon

Dye Method - PrintWorks™ Precision Dyeing

Standard Backing - PVC-Free WellBAC® Comfort
Available with TractionBack®

Nominal Total Thickness - 8.5 mm AVG.

Stain Resist/Soil Release - StainSmart®

Flammability - ≥ 0.45 (Class I)

Texture Appearance Retention Rating (TARR) - Severe

Indoor Air Quality - CRI Green Label Plus™

GLP3237, Carpet Category 5Y

技术指标

结构 - 簇绒织造圈绒结构

产品尺寸 - 100厘米 X 100厘米
25厘米 X 100厘米

表层纤维 - 100% 美利肯认证尼龙

染色技术 - PrintWorks™ 电脑数码针染

标准底垫 - 不含PVC之 WellBAC® Comfort
可选装 TractionBack® 免胶

额定总厚度 - 8.5 毫米 平均

抗污/去污 - StainSmart®

阻燃性 - ≥ 0.45 (一级)

外观保持等级 (TARR) - 重度商业使用

室内空气质量 CRI Green Label Plus™ - GLP3237, 地毯类别 5Y

Installation Method

安装方式 :

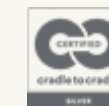


Monolithic
同一方向安装



Planks
板条安装

TractionBack®
Simplify your modular installation with Milliken's patented TractionBack®, an innovative backing system that is faster, more cost efficient, and environmentally superior to wet adhesives and peel-and-stick carpet tile.



Declare.



Follow us on social media:

WeChat

Instagram

Website