



**PATINA**

*Milliken*<sup>™</sup>

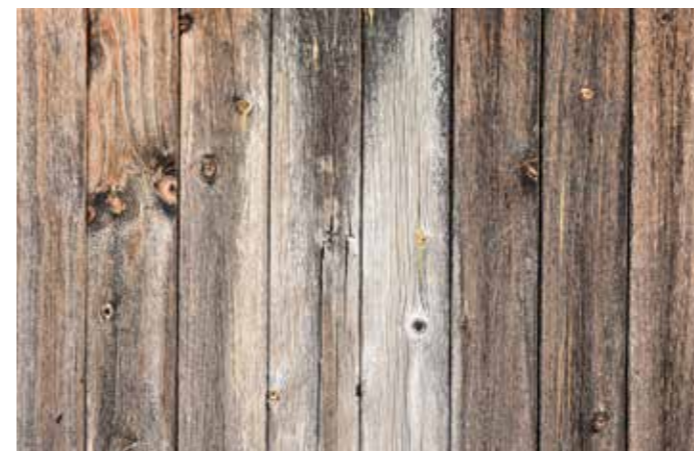
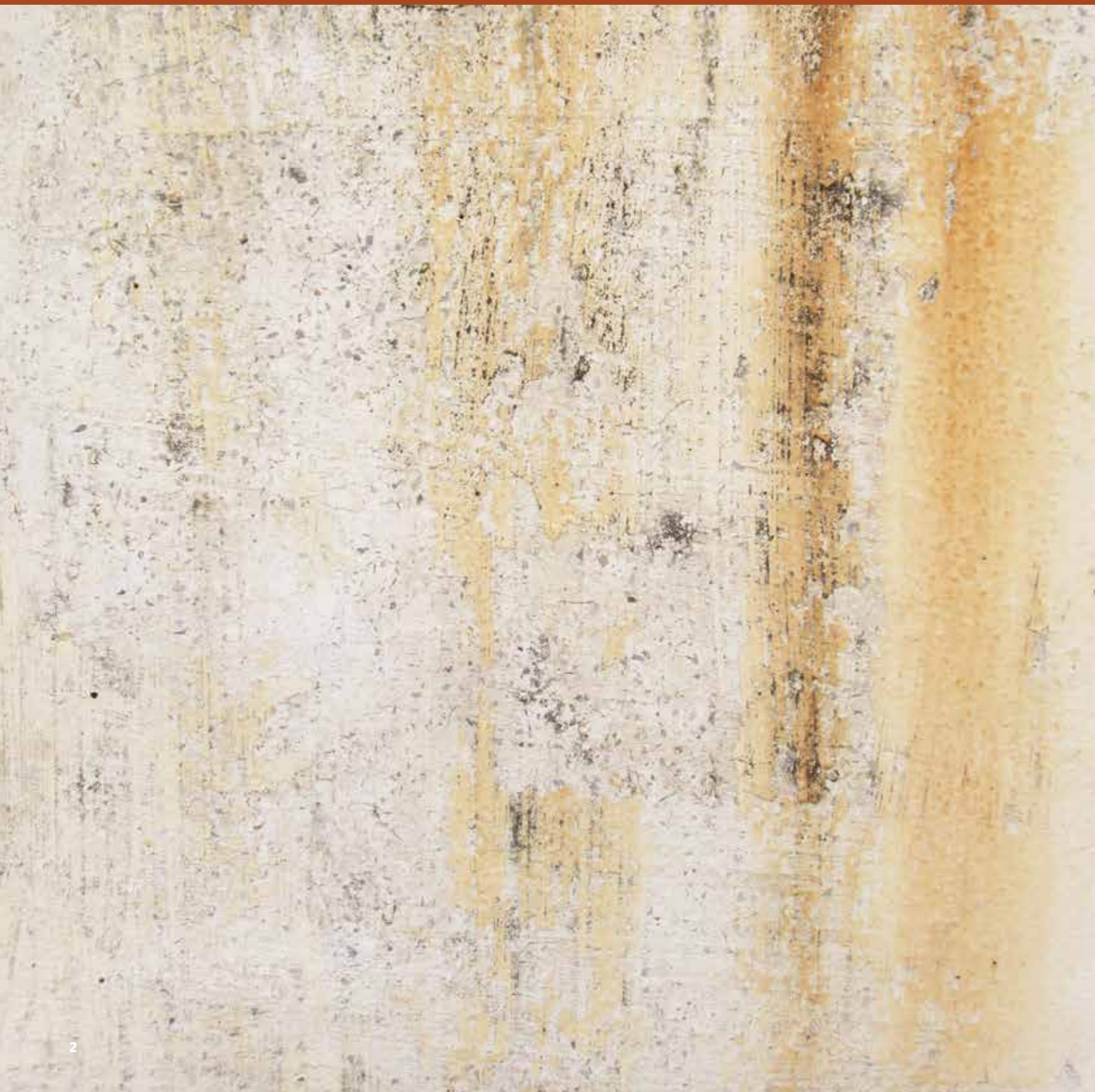


## INSPIRED. INSPIRING.

源于灵感 智启灵感

Patina illustrates the acquired change of natural surfaces through age and exposure. The multitudes of contrasting textures and divergent surfaces creates a non plus ultra in any given space.

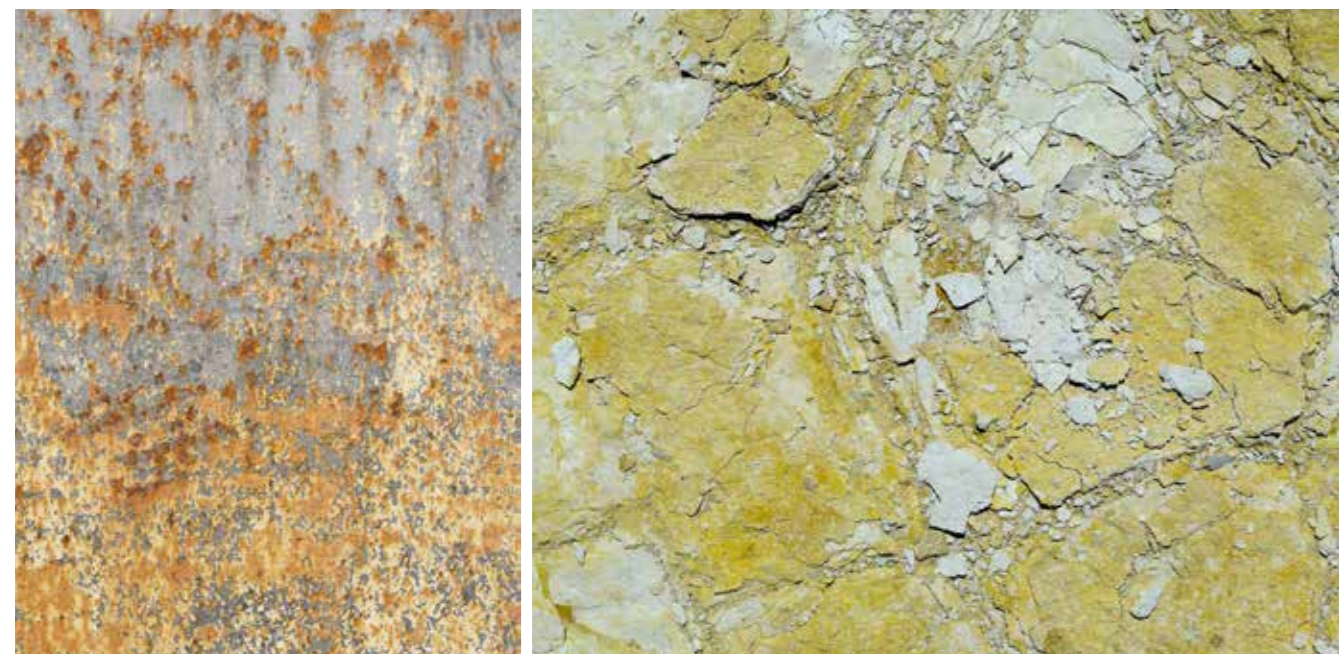
Stone, Copper, Bronze, Wood.. Coordinate your space through the rediscovery of Patina.



# Surface Connections

## Patina - Sulphur Oxide

A thin gold layer, that forms on a surface as a result of natural corrosion.



PAT4 OXIDE



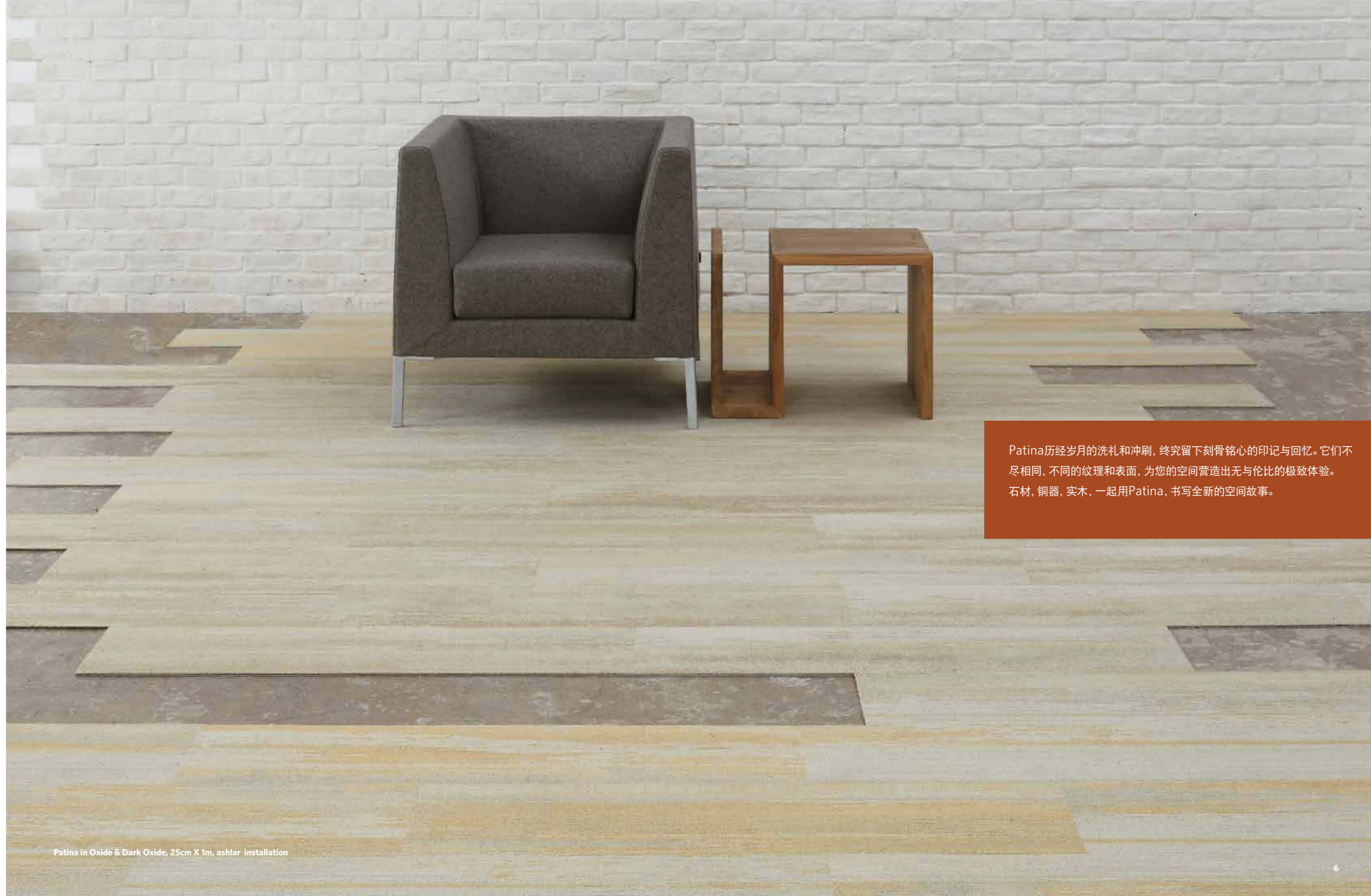
PAT105-4 DARK OXIDE



PAT105 SULPHUR



PAT39-105 SULPHUR OXIDE



Patina历经岁月的洗礼和冲刷，终究留下刻骨铭心的印记与回忆。它们不尽相同，不同的纹理和表面，为您的空间营造出无与伦比的极致体验。石材，铜器，实木，一起用Patina，书写全新的空间故事。

Patina in Oxide & Dark Oxide, 25cm X 1m, ashlar installation



Patina in Oxide & Dark Oxide, 25cm X 1m, ashlar installation

# Surface Connections

## Patina - Copper Rust

This connection explores the rustic hues within the corrosion of Metallic surfaces.



PAT44-48 COPPER    PAT144-48 DARK COPPER    PAT114-44 RUST    PAT114 COPPER RUST    CUSTOM COLOR



Patina in Copper, Copper Rust & custom color, 25cm X 1m, ashlar installation



Patina in Rust, 25cm X 1m, herringbone and random installation



Patina in Copper, Copper Rust & custom color, 25cm X 1m, ashlar installation



Patina in Wood, Bark, Ebony Wood & Wood Bark, 25cm X 1m, ashlar installation



Patina in Wood, Bark, Ebony Wood & Wood Bark, 25cm X 1m, ashlar and gradation installation

# Surface Connections

## Patina - Wood Bark

The subtle shift of color on old wood installations can create a beautiful gradation effect on to the floor plane.



PAT124 WOOD

PAT145-124 BARK

PAT145 EBONY WOOD

PAT59 WOOD BARK



Patina in Ebony Wood, 25cm X 1m, ashlar installation



Patina in Ebony Wood, 25cm X 1m, ashlar installation



Patina in Wood, Bark, Ebony Wood & Wood Bark, 25cm X 1m, herringbone installation



Patina in Stone, 25cm X 1m, ashlar installation

## Surface Connections

### Patina - Concrete Stone

This material connection is inspired from the corticated layer that develops over time on stone through the passage of time and exposure. The subtle textures of transitional grays can be coordinated with industrial concrete material finishes within the interior space.



PAT180 CONCRETE



PAT108-180 STONE



PAT108 DIM STONE



PAT140-108 CONCRETE STONE



Patina in Concrete, 50cm X 50cm, monolithic installation



Patina in Concrete & Stone, 50cm X 50cm, monolithic installation with inserts



Patina in Concrete, Stone & Dim Stone, 50cm X 50cm, monolithic installation with inserts



Patina in Concrete, Stone, Dim Stone & Concrete Stone, 50cm X 50cm, monolithic installation with inserts



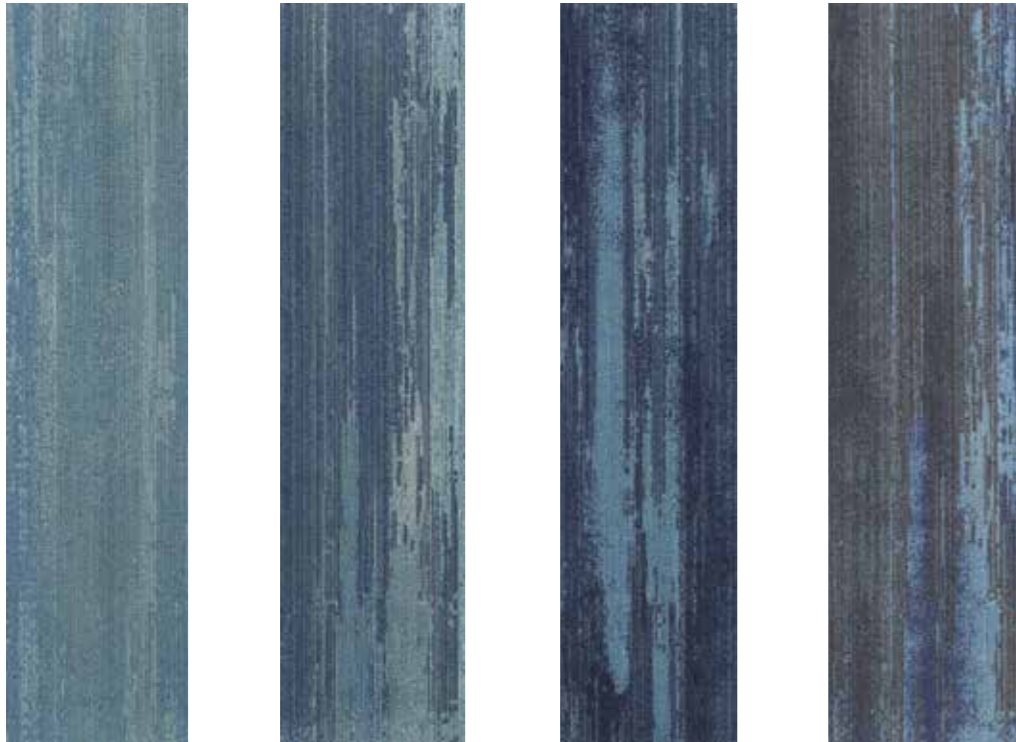


Patina in Stone, Dim Stone & Concrete Stone, 25cm X 1m, ashlar installation

# Surface Connections

## Patina - Blue Steel

Inspired by the fine greenish-blue film that forms naturally on metals over a period of time...  
This set can be used as a natural gradation leading up to a dynamic accent.



PAT139-157 FROST STEEL    PAT126-157 POWDER STEEL    PAT126 MIDNIGHT STEEL    PAT119-157 BLUE STEEL



Patina in Powder Steel & Blue Steel, 25cm X 1m, ashlar installation

# COLORLINE



PAT21 TINT STUCCO



PAT4 OXIDE



PAT44-48 COPPER



PAT 124 WOOD



PAT180 CONCRETE



PAT48 STAINLESS



PAT119-153 SLATE



PAT139-157 FROST STEEL



PAT4-21 STUCCO



PAT105-4 DARK OXIDE



PAT144-48 DARK COPPER



PAT145-124 BARK



PAT108-180 STONE



PAT13-48 COOL STEEL



PAT119-13 ASH SLATE



PAT126-157 POWDER STEEL



PAT87 DARK STUCCO



PAT105 SULPHUR



PAT114-44 RUST



PAT145 EBONY WOOD



PAT108 DIM STONE



PAT13 DARK STEEL



PAT119 JET BLACK



PAT126 MIDNIGHT STEEL



PAT141-14 STUCCO VERDIGRIS



PAT39-105 SULPHUR OXIDE



PAT114 COPPER RUST



PAT59 WOOD BARK



PAT140-108 CONCRETE STONE



PAT79-13 STAINLESS STEEL



PAT153-119 SLATE BLACK



PAT119-157 BLUE STEEL

# COLORLINE

# PATINA

## SPECIFICATION

**Construction** - Tufted, Textured Loop

**Tile Size** - 50 cm x 50 cm (19.7 x 19.7 In.)  
25cm X 1m (9.8 X 39.4 In.)

**Face Fiber** - 100% Milliken Certified Nylon

**Dye Method** - Millitron®

**Standard Backing** - PVC-Free WellBAC™ Comfort  
Available with TractionBack®

**Nominal Total Thickness** - 8.0 mm AVG.  
\* 8.5 mm AVG.

## PERFORMANCE

**Stain Repel/Stain Resist/Soil Release** - StainSmart®

**Flammability** - ≥ 0.45 (Class I)

**Texture Appearance Retention Rating (TARR)** - Severe

**Indoor Air Quality - CRI Green Label Plus™** - GLP3237, Carpet Category 5Y

\* For Trimline Product

## Installation Method 安装方式:



**Monolithic**  
同一方向安装



**Quarter-turn**  
转直角安装



**Ashlar**  
品字安装



**Planks**  
板条安装

## 技术指标

**结构** - 簇绒织造圈绒结构

**产品尺寸** - 50 厘米 X 50 厘米 (19.7 X 19.7 英寸)  
25 厘米 X 1 米 (9.8 X 39.4 英寸)

**表层纤维** - 100% 美利肯认证尼龙

**染色技术** - Millitron® 电脑数码针染

**标准底垫** - 不含 PVC 之 WellBAC™ Comfort 舒适软底  
可选装 TractionBack® 免胶

**额定总厚度** - 8.0 毫米 平均  
\* 8.5 毫米 平均

## 产品性能

**抗污 / 防污 / 去污** - StainSmart®

**阻燃性** - ≥ 0.45 (一级)

**外观保持等级 (TARR)** - 重度商业使用

**室内空气质量 CRI Green Label Plus™** - GLP3237, 地毯类别 5Y



**Declare.**

Milliken

**China**  
North & North West &  
South West Of China  
T +86 10 6465 1206  
T +86 133 0101 8460  
South of China &  
HK & Macau  
T +86 181 1743 0032  
East & Central of China  
T +86 21 6145 1758

**India**  
Bangalore  
T +91 98408 98963  
Delhi  
T +91 95010 11800  
Hyderabad  
T +91 99631 64059  
Mumbai  
T +91 98926 00362

**Rest of Asia**  
Manila  
T +63 915 816 7127  
Seoul  
T +82 2 3783 0747  
Singapore  
T +65 6593 1301  
Tokyo  
T +81 3 5203 8406  
Jakarta  
T +6221 2960 7222



www.millikencarpet.com

2710026492  
Issued Nov 2019