



LOUDSPEAKER

Milliken[™]

POWERLINES/QS | SHIPS WITHIN 3 WEEKS



COLOR AND TEXTURE IN PERFECT HARMONY

The Loudspeaker printed collection was created to pair with select solution dyed coordinates from our Powerlines Quick Ship portfolio. By integrating both products, you can define spaces with added design flexibility. And since all products **ship within 3 weeks**, you get the benefit of beauty and speed combined.



*Scan to explore the
product catalog.*

Loudspeaker Tweeter in Teal Chroma TWE201, Mid-Range in Teal Blend MDR201-197, Woofer in Teal Detail WOF201-119,
and Subwoofer in Coal Black SUB119. Powerlines/QS Coordinate Impromptu in Rhapsody IPR174-154-180.





COUNTERBALANCE
Digitize CTB180-218-27



COUNTERBALANCE
Acoustic CTB27-153-154



COUNTERBALANCE
Boost CTB161-141-19



COUNTERBALANCE
Rhapsody CTB174-154-180



COUNTERBALANCE
Production CTB124-13-144



COUNTERBALANCE
Compression CTB27-180-79



IMPROMPTU
Digitize IPR180-218-27



IMPROMPTU
Acoustic IPR27-153-154



IMPROMPTU
Boost IPR161-141-19

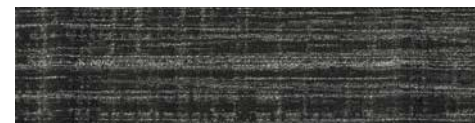
POWERLINES/QS COORDINATES



IMPROMPTU
Rhapsody IPR174-154-180



IMPROMPTU
Production IPR124-13-144



IMPROMPTU
Compression IPR27-180-79



(Left) Counterbalance in Rhapsody CTB174-154-180.

(Right) Impromptu in Digitize IPR180-218-27 and Production IPR124-13-144.







(Left) Loudspeaker Tweeter in Green Chroma TWE161. (Corridor) Powerlines/QS Coordinate Impromptu in Acoustic IPR27-153-154.

(Right) Loudspeaker Subwoofer in Wool Grey SUB118, Woofer in Green Detail WOF202-118, and Mid-Range in Green Blend MDR202-161.







Loudspeaker Subwoofer in Heather Grey SUB250, Woofer in Blue Detail WOF157-250, Mid-Range in Blue Blend MDR73-157.
Powerlines/QS Coordinate Impromptu in Digitize IPR180-218-27.





Loudspeaker Tweeter in Green Chroma TWE161, Mid-Range in Green Blend MDR202-161.
Powerlines/QS Coordinate Impromptu in Boost IPR161-141-19.

Loudspeaker offers 4 patterns in 5 colors that coordinate with Powerlines/QS patterns Impromptu and Counterbalance.



Subwoofer sets the stage as neutral.



Woofer introduces subtle hints of color.



Mid-Range balances neutral and color.



Tweeter cranks up the color volume.

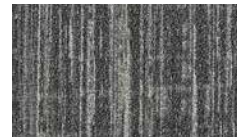
LOUDSPEAKER SCALE: APPROXIMATELY THREE PLANKS WIDE



MID-RANGE
Blue Blend MDR73-157



WOOFER
Blue Detail WOF157-250



IMPROMPTU
Digitize IPR180-218-27



TWEETER
Blue Chroma TWE52



SUBWOOFER
Heather Grey SUB250



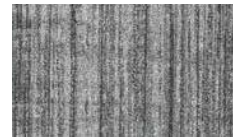
SUBWOOFER
Coal Black SUB119



WOOFER
Teal Detail WOF201-119



MID-RANGE
Teal Blend MDR201-197



IMPROMPTU
Rhapsody IPR174-154-180



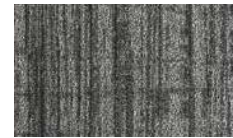
TWEETER
Teal Chroma TWE201



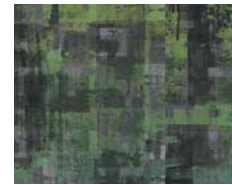
SUBWOOFER
Wool Grey SUB118



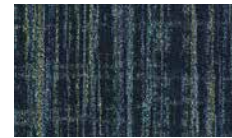
WOOFER
Green Detail WOF202-118



IMPROMPTU
Acoustic IPR27-153-154



MID-RANGE
Green Blend MDR202-161



IMPROMPTU
Boost IPR161-141-19



TWEETER
Green Chroma TWE161



WOOFER
Coral Detail WOF146-152



IMPROMPTU
Production IPR124-13-144



SUBWOOFER
Smokey Grey SUB152



MID-RANGE
Coral Blend MDR33-146



TWEETER
Coral Chroma TWE33



WOOFER
Harvest Detail WOF256-254



MID-RANGE
Harvest Blend MDR256-190



TWEETER
Harvest Chroma TWE256

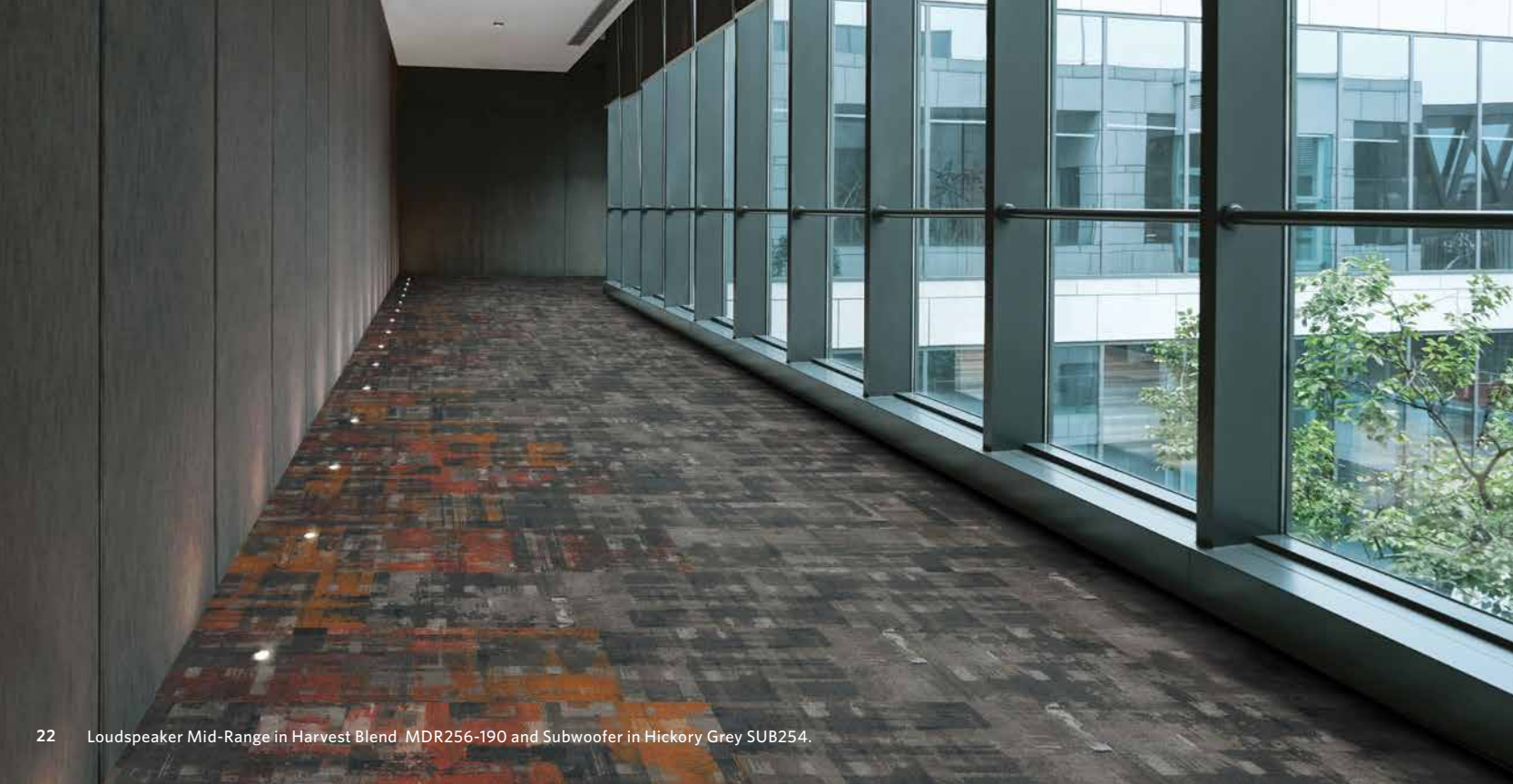


SUBWOOFER
Hickory Grey SUB254



IMPROMPTU
Compression IPR27-180-79

LOUDSPEAKER COLORLINE WITH COORDINATES



M/PACT™ Carbon Neutral Product

Climate change is one of the greatest threats facing humanity. That's why our flooring products are carbon neutral everywhere in the world. Let's work together for a better tomorrow.

Science Based Targets initiative (SBTi)

At Milliken, we have committed to reducing all scope 1, 2, and 3 emissions – all the direct and indirect emissions from our company – and becoming net-zero by the year 2050.

We have established a series of targets that have been approved by the Science Based Targets initiative (SBTi), a collective of international organizations dedicated to helping companies set emission reduction targets in line with climate science and the Paris Climate Agreement.

As the first floor covering company to be validated across all science-based targets to achieve net-zero and the first 50 companies in the world to have verified science-based net-zero targets, join us on the journey.

Additional Sustainable Features

Loudspeaker and Powerlines/QS Coordinates are manufactured with WellBAC® Comfort Cushion backing, and are certified NSF-140 Gold with 39.3% (Loudspeaker) and 43.1% (Powerlines/QS Coordinates) pre-consumer recycled content by total weight. **Loudspeaker and Powerlines/QS Coordinates** are also available with our NSF-140 Platinum backing option. All Milliken modular carpets carry Environmental Product Declarations and Health Product Declarations, which contribute to LEED certification. Additionally, Milliken modular carpets carry Declare® transparency labels and comply with the Red List Imperative of the Living Building Challenge.™



Scan to learn more about our commitment to sustainability.



LOUDSPEAKER

Woofer / Subwoofer / Mid-Range / Tweeter

Construction

Tufted, Textured Loop

Tile Size

25 cm x 1 m (9.84" x 39.4")

Yarn Type

Milliken-Certified WearOn® Nylon

Stain Resist / Soil Release

StainSmart®

Finished Pile Height

0.13" (3.30 mm)

Finished Pile Thickness

0.08" (2.03 mm)

Average Density (Finished)

6,541

Standard Backing

PVC-Free WellBAC® Comfort Cushion

Available with TractionBack®

Texture Appearance Retention Rating (TARR)

Severe Traffic End-Use Applications

Recommended Installation Methods



ALL PLANK
METHODS

POWERLINES/QS COORDINATES

Selected SKUs from Major Frequency: Three
Impromptu / Counterbalance

Construction

Tufted, Textured Loop

Tile Size

25 cm x 1 m (9.84" x 39.4")

Yarn Type

Universal Fibers® Solution-Dyed Nylon

Stain Resist / Soil Release

StainSmart®

Finished Pile Height

Impromptu: 0.102" (2.59 mm) / *Counterbalance*: 0.106" (2.69 mm)

Finished Pile Thickness

Impromptu: 0.061" (1.55 mm) / *Counterbalance*: 0.056" (1.42 mm)

Average Density (Finished)

Impromptu: 8,263 / *Counterbalance*: 9,000

Standard Backing

PVC-Free WellBAC® Comfort Cushion

Available with TractionBack®

Texture Appearance Retention Rating (TARR)

Severe Traffic End-Use Applications

Recommended Installation Methods



ALL PLANK
METHODS

TRACTIONBACK

Simplify your modular installation with Milliken's patented TractionBack®, an innovative backing system that is faster, more cost efficient, and environmentally superior to wet adhesives and peel-and-stick carpet tile.

SHOWN ON THE COVER

Loudspeaker Mid-Range in Blue Blend MDR73-157 and Woofer in Blue Detail WOF157-250.

Images in this brochure are approximate for color and pattern scale. Please use actual carpet samples to make your final selections.

Customer Concierge 800.824.2246

millikenfloors.com

© 2022 Milliken & Company
Design © Milliken & Company
Made in the USA

2710034866
CP1222

Milliken™