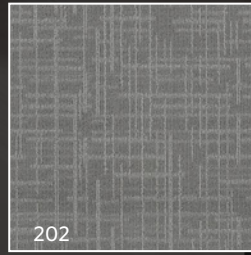
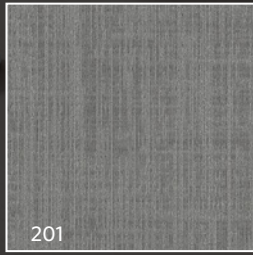


## One Step



Milliken®

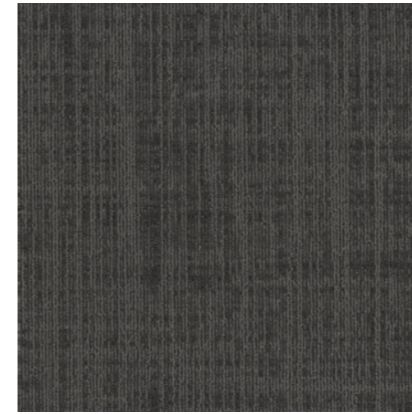




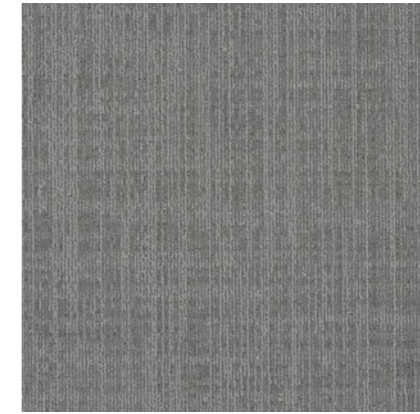




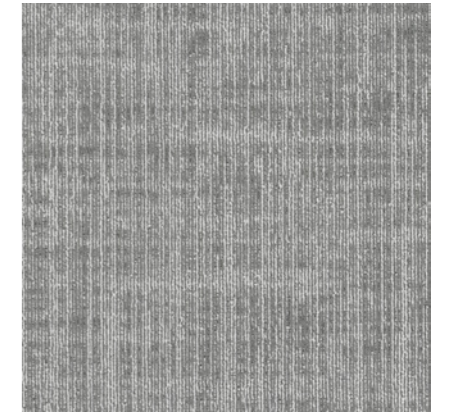
## COLORLINE



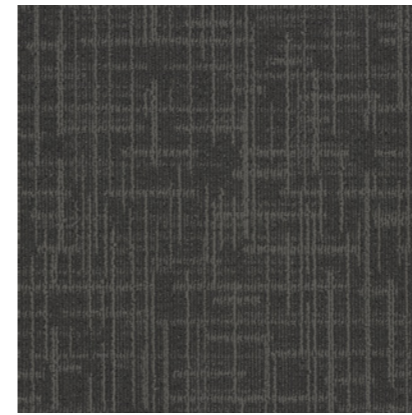
101



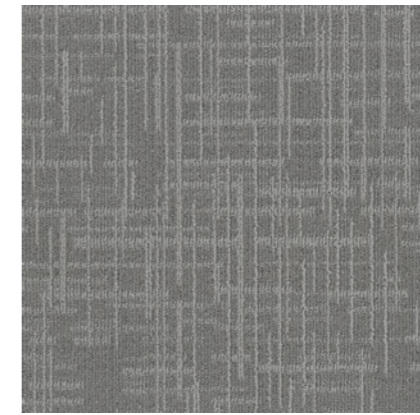
201



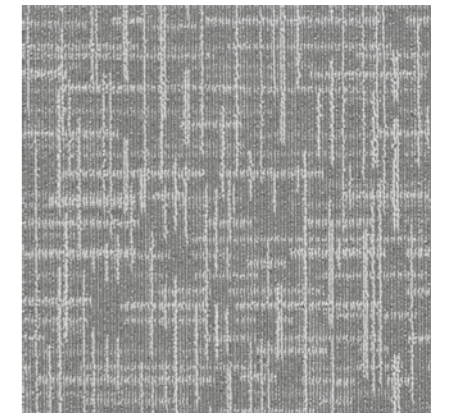
301



102



202



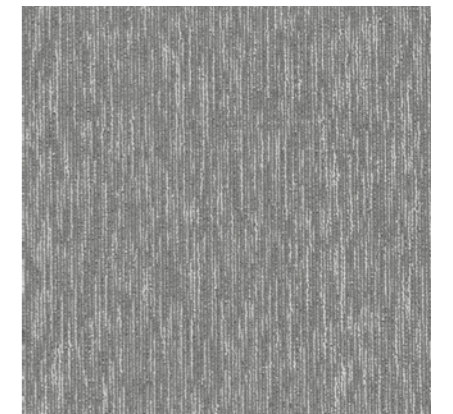
302



103



203



303



**M/PACT™**  
**CARBON NEUTRAL PROGRAM**  
**ONE STEP**  
A CARBON NEUTRAL COLLECTION

Climate change is one of the greatest threats facing humanity.

Today, our carpet, LVT and entryway tiles are carbon neutral everywhere in the world. We invite you to learn more about the significant changes we've made, then let's work together to design a better future.



# One Step

## SPECIFICATION

**Construction** - Tufted, Textured Loop

**Tile Size** - 50cm X 50 cm

**Face Fiber** - 100% Milliken Certified Nylon

**Dye Method** - Solution Dyed

**Standard Backing** - PVC-Free WellBAC™ Function

Available with TractionBack®

**Nominal Total Thickness** - 5.8 mm AVG.

**Flammability** - ≥ 0.45 (Class I)

**Texture Appearance Retention Rating (TARR)** - Heavy

**Indoor Air Quality - CRI Green Label Plus™** - GLP3200, Carpet Category 14X

## 技术指标

**结构** - 簇绒织造圈绒结构

**产品尺寸** - 50厘米 X 50 厘米

**表层纤维** - 100% 美利肯认证尼龙

**染色技术** - 原液染色

**标准底垫** - 不含PVC之 WellBAC™ Function弹性底背

可选装TractionBack® 免胶

**额定总厚度** - 5.8 毫米 平均

**阻燃性** - ≥ 0.45 (一级)

**外观保持等级 (TARR)** - 频繁商业使用

**室内空气质量 CRI Green Label Plus™** - GLP3200, 地毯类别 14X

## Installation Method:

安装方式:



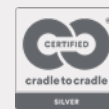
**Monolithic**

同一方向安装

## TractionBack®

Simplify your modular installation with Milliken's patented TractionBack®, an innovative backing system that is faster, more cost efficient, and environmentally superior to wet adhesives and peel-and-stick carpet tile.

[www.millikencarpet.com](http://www.millikencarpet.com)



**CHINA**  
**North & North West & South West Of China**  
 T +86 10 6465 1206  
**South of China & HK & Macau**  
 T + 852 3956 2259  
**East & Central of China**  
 T +86 21 6145 1758

**INDIA**  
**Bangalore**  
 T +91 98408 98963  
**Delhi**  
 T +91 95010 11800  
**Hyderabad**  
 T +91 99631 64059  
**Mumbai**  
 T +91 98926 00362

**REST OF ASIA**  
**Manila**  
 T +63 2 8859 2888  
**Seoul**  
 T +82 2 3783 0747  
**Singapore**  
 T +65 6593 1301  
**Tokyo**  
 T +81 3 5203 8406  
**Jakarta**  
 T +62 2129 6072 22

303, monolithic installation