



**METRO PARK STONE**  
RIGIDFORM™ SPC

Milliken™



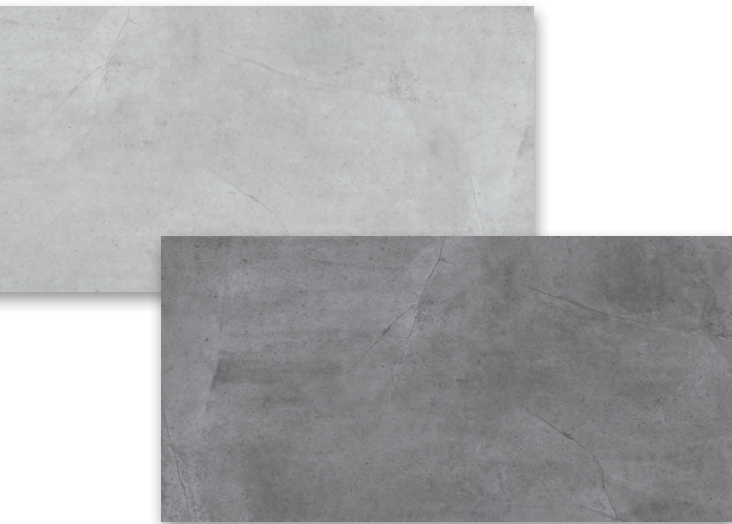
# Deconstructed.

The office has been changed tenfold with the rise of the new generation entering the work force. The dynamics have changed - there's more flexibility, freer code of conduct, more customization as well as personalization within the four cornered rooms. For the Gen X and Millenials, work is part of their personal lives; the office, an extension of their home. The office represents not only their job, but also serves as their daily sanctuary where comfort and conduciveness are essential for productivity and inspiration. Old rules are meant to be broken... for the better.

**SLATE** is a fine-grained, foliated, homogeneous metamorphic rock derived from an original shale-type sedimentary rock composed of clay or volcanic ash through low-grade regional metamorphism. Its texture is the finest of its kind.







SLATE/Mica • SLA209  
SLATE/Magnet • SLA145



# Slate

Raw like gravel on the sidewalk. This STONE style set is solid in color, meant to be obscure and give emphasis to the interior design elements and bounce back light sources to give the room its effervescent glow.



Slate in Mica



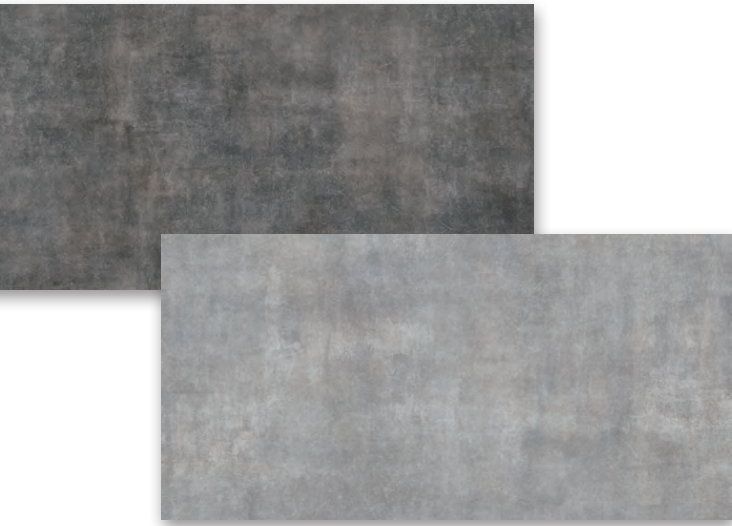




Polished Concrete

**POLISHED CONCRETE** is inspired by industrial floors, where heavy-duty machines are used to gradually grind down a concrete surface to the desired degree of shine and smoothness, similar to sanding wood.





POLISHED CONCRETE/Scoring • PLC67  
POLISHED CONCRETE/Polish • PLC144



# Polished Concrete

Bright and invigorating. This STONE set features naturally formed patterns with a polished finish. It amplifies the sense of lightness in a room, pumping up the energy for fruitful discussions.



Polished Concrete in Scoring









**ARTS AVENUE** is inspired by travertine, a terrestrial sedimentary rock, formed by the precipitation of carbonate minerals from solution in ground and surface waters, or geothermally heated hot-springs.





ARTS AVENUE/Fairmount • ASA209  
ARTS AVENUE/Boathouse • ASA180  
ARTS AVENUE/Logan • ASA153

# Arts Avenue

The right environment breeds creativity. This STONE style set features marbled patterns in muted colors that easily make the surroundings pop; its subtlety makes it a good choice for artistic work spaces.





Arts Avenue in Fairmount









Porcelain

**PORCELAIN** derives inspiration from faux marble or ceramic tiles, created to mimic the look of natural stone. To the untrained eye, some high quality porcelain tiles look and feel incredibly like natural stone.





Photo © Dion Beaman



PORCELAIN/Cream • POR48

## Porcelain

Grand but not overbearing. This STONE style features porcelain-like floorings that elevate a room or a hall with a new type of sophistication, one that is aspiring and down-to-earth at the same time.





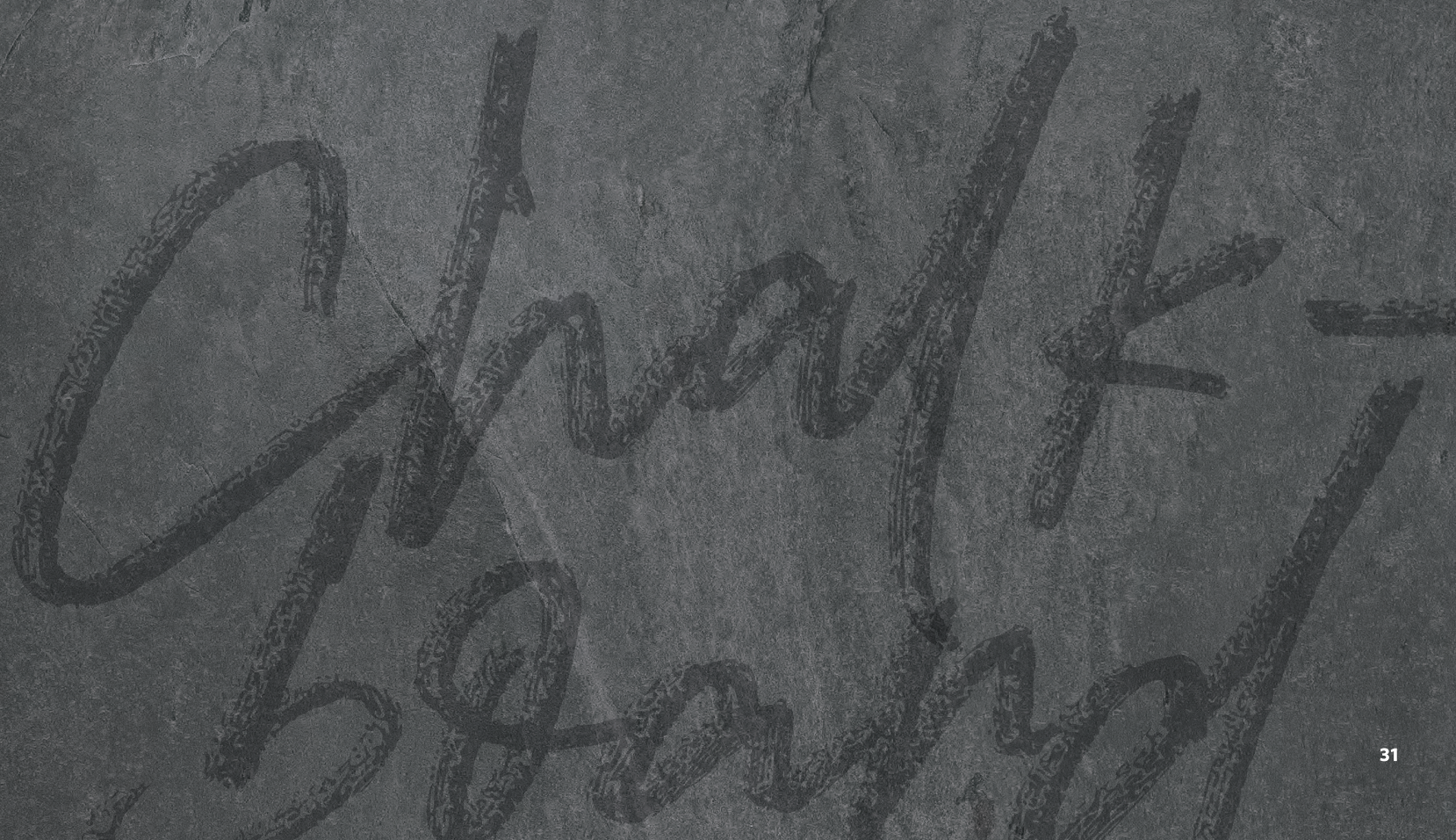
Porcelain in Cream







**CHALKBOARD** is inspired by basalt rocks which are formed from the rapid cooling of magnesium-rich and iron-rich lava exposed. Do you know that more than 90% of all volcanic rock on earth is basalt?





CHALKBOARD/Iron • CKB5  
CHALKBOARD/Meta • CKB133



# Chalkboard

No frills, no pretensions. This STONE style set is more on the rustic side with its rough edges serving as its main appeal. Perfectly suits a laid-back setting where everyone can take a breather.





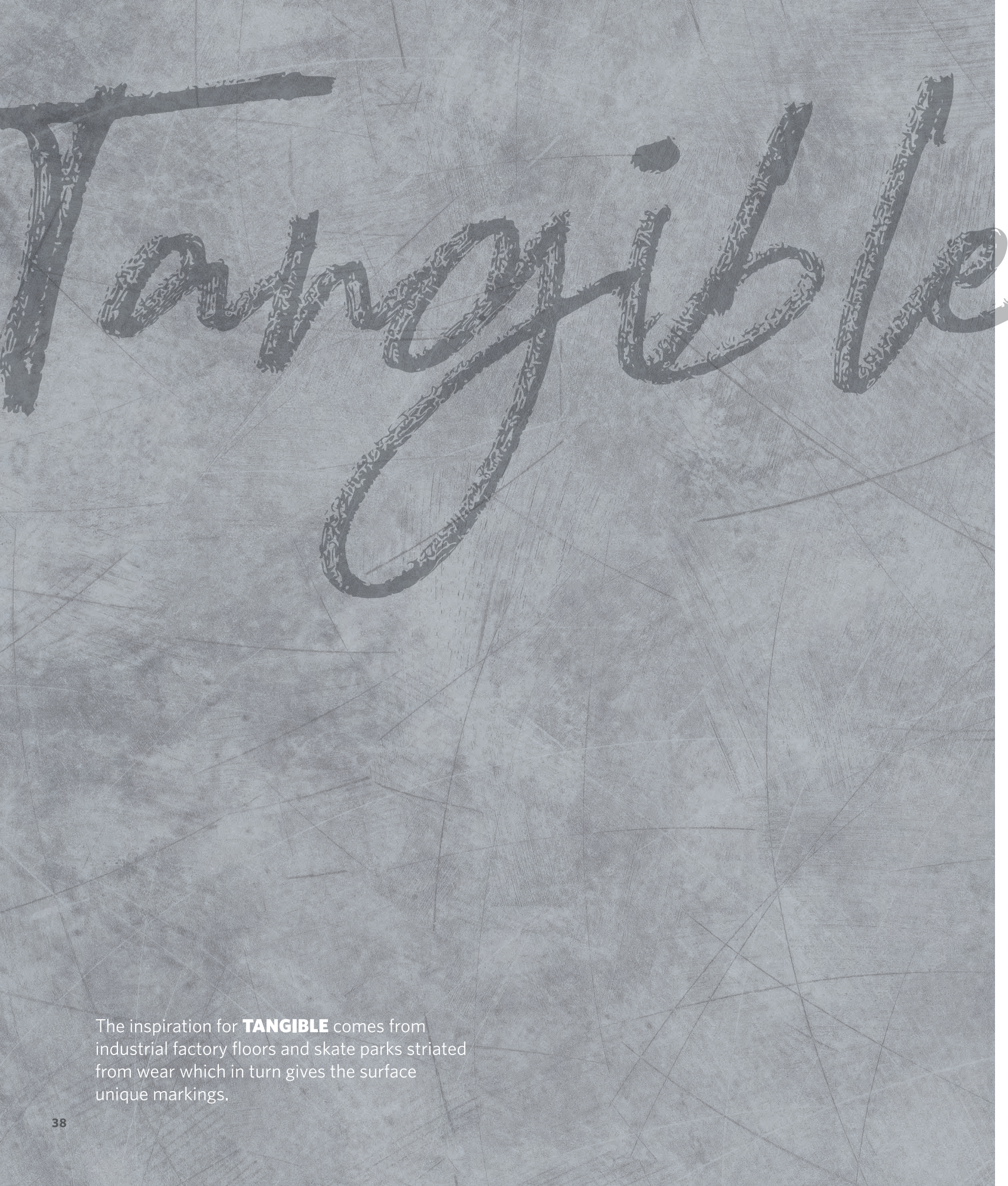
Chalkboard in Meta











The inspiration for **TANGIBLE** comes from industrial factory floors and skate parks striated from wear which in turn gives the surface unique markings.

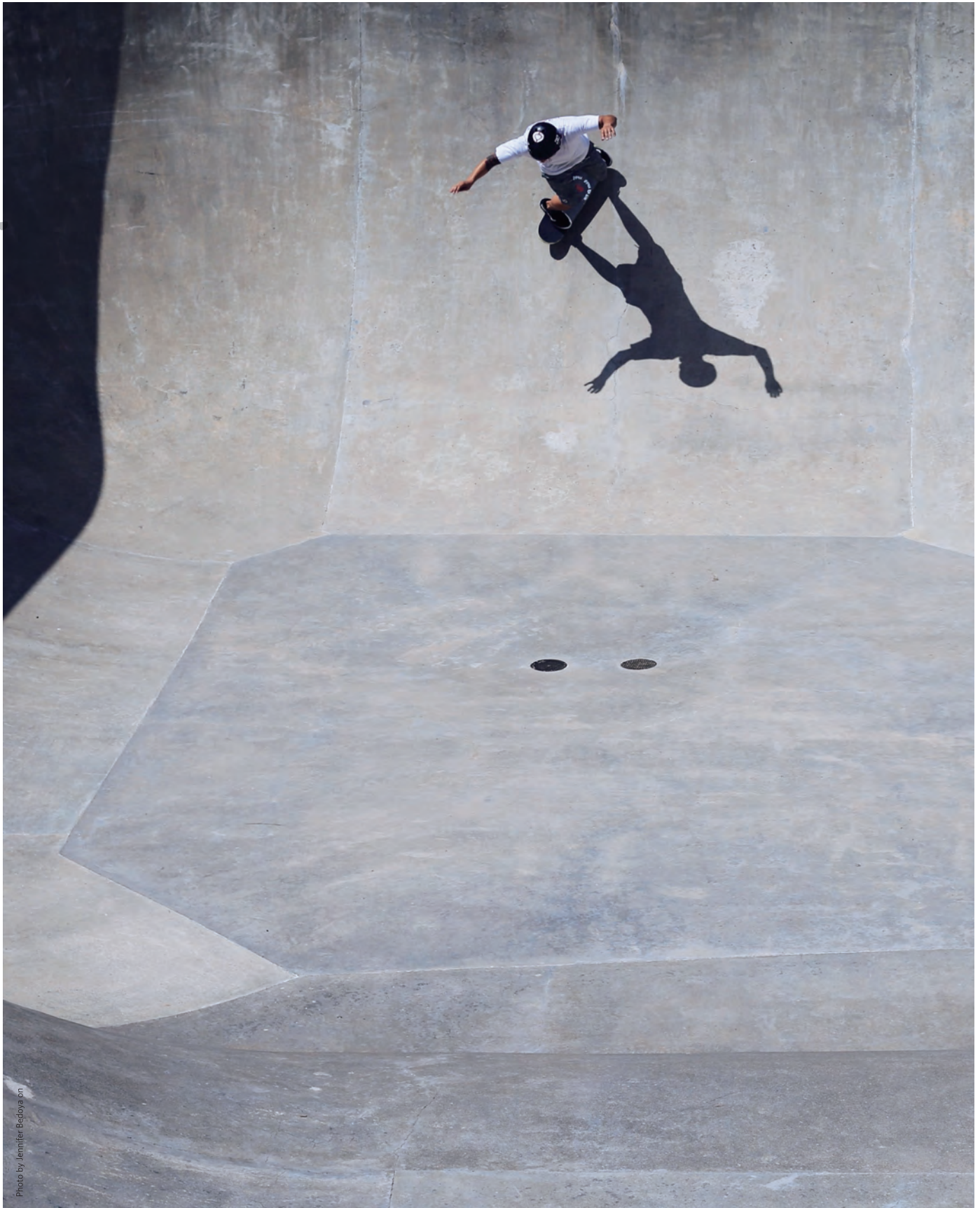


Photo by Jennifer Bedoya on



TANGIBLE/Dawn • TGB6  
TANGIBLE/Twilight • TGB250

# Tangible

Playful and welcoming. This STONE style set impresses with its smoothness and friendly undertones - a refreshing sight to see after a long day.







Tangible in Twilight







PORCELAIN/Cream • POR48



SLATE/Mica • SLA209



ARTS AVENUE/Fairmount • ASA209



ARTS AVENUE/Boathouse • ASA180



TANGIBLE/Dawn • TGB6



TANGIBLE/Twilight • TGB250

*Metra Park*



SLATE/Magnet • SLA145



CHALKBOARD/Meta • CKB133



ARTS AVENUE/Logan • ASA153



CHALKBOARD/Iron • CKB5



POLISHED CONCRETE/Scoring • PLC144



POLISHED CONCRETE/Polish • PLC67

# Stone Collection

# COORDINATION



Washed in Varnished, monolithic installation, Slate in Mica

### Surface Study



WASHED  
WAS157-123 Varnished



SLATE  
SLA209 Mica



# COORDINATION



Charter Oak in Smoke, Slate in Magnet



SLATE  
SLA145 Magnet

Metro Park Wood



CHARTER OAK  
COK144 Smoke





# COORDINATION



Center Accent, East and Center Neutral in Medium Gray With Rose, monolithic installation, Tangible in Twilight

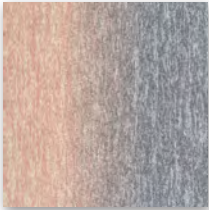
Boundaries



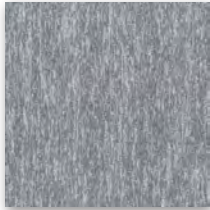
ARTS AVENUE  
ASA180 Boathouse



CENTER ACCENT  
CTA262



EAST  
EST262-153



CENTER NEUTRAL  
CTN153

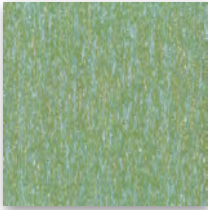


# COORDINATION



Mid Gray With Emerald, monolithic installation, Arts Avenue in Boathouse

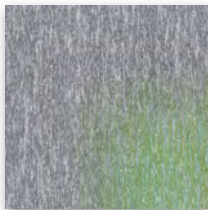
### Boundaries



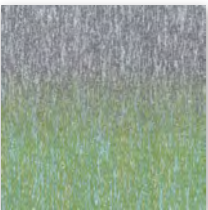
CENTER ACCENT  
CTA200-202



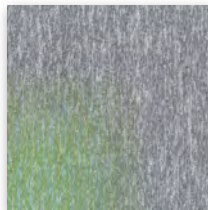
CENTER NEUTRAL  
CTN153



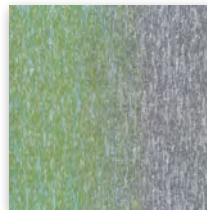
NEUTRAL NORTH WEST  
NNW200-202-153



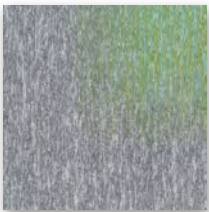
NORTH  
NOR200-202-153



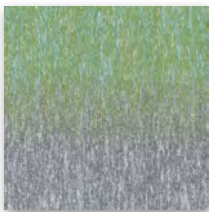
NEUTRAL NORTH EAST  
NNE200-202-153



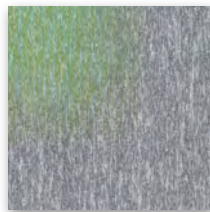
EAST  
EST200-202-153



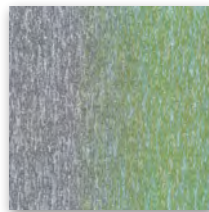
NEUTRAL SOUTH WEST  
NSW200-202-153



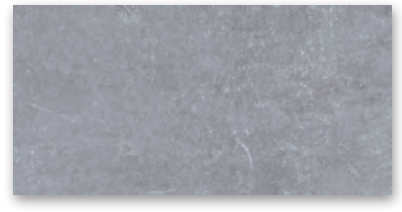
SOUTH  
SOU200-202-153



NEUTRAL SOUTH EAST  
NSE200-202-153



WEST  
WST200-202-153



ARTS AVENUE/Boathouse  
ASA180

# COORDINATION

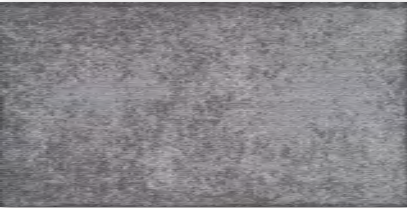


Laid Bare in Powder (50x50cm, 50x100cm), Urban Poetry in Powder Rose, custom installation, Porcelain in Cream

Comfortable Concrete



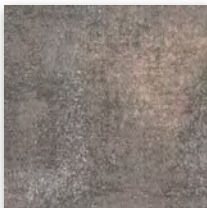
PORCELAIN  
POR48 Cream



LAI D BARE  
LDB154-180 Powder



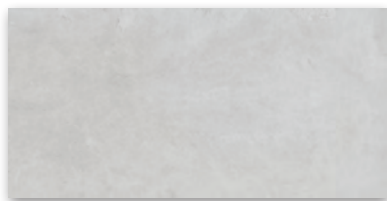
LAI D BARE  
LDB154-180 Powder



URB AN POETRY  
UPY154-180-261 Powder Rose



Hickory in Parchment, Porcelain in Cream



PORCELAIN  
POR48 Cream

Metro Park Wood



HICKORY  
HCK22-20 Parchment

# COORDINATION



Snowflake with Mid Gray, monolithic installation, Chalkboard in Iron



CHALKBOARD  
CKB5 Iron

Boundaries



Snowflake with Mid Gray



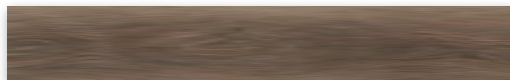


Chalkboard in Iron, Royal oak in knight



CHALKBOARD  
CKB5 Iron

Metro Park Wood



ROYAL OAK  
ROK176 knight

# COORDINATION



Live Oak in Jacobean, Tangible in Twilight



TANGIBLE  
TGB250 Twilight

Metro Park Wood



LIVE OAK  
LOK18 Jacobean



Non in Cloud C, Plus and Ultra in Arctic C, Monolithic Installation, Tangible in Twilight

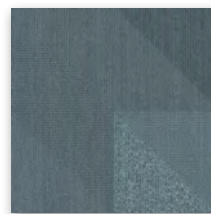
PlayAngle



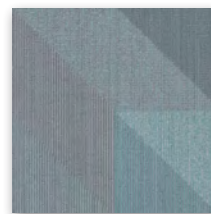
TANGIBLE  
TGB250 Twilight



NON  
NON6-180 Cloud C



PLUS  
PLUS158-140 Arctic C



ULTRA  
ULT139-140 Arctic C



Naturally



## SUSTAINABILITY

In keeping with Milliken's long-standing culture of sustainability, our Luxury Vinyl Tile products are 100% Ortho-Phthalate free. They do not contain problematic post-consumer recycled material. Further, Milliken's Luxury Vinyl Tiles are certified to the most stringent global environmental standards.

For further information, visit: [millikenfloors.com/sustainability](https://millikenfloors.com/sustainability)



## MOISTURE MANAGEMENT

With Milliken's specialty LVT adhesive, our Luxury Vinyl Tile products can be installed in environments encountering high moisture readings up to 99% Relative Humidity.

For further information, visit: [millikenfloors.com/lvt](https://millikenfloors.com/lvt)



safe



GREENGUARD Certification are scientifically proven to meet some of the world's most rigorous, third-party chemical emissions standards, helping to reduce indoor air pollution and the risk of chemical exposure, while aiding in the creation of healthier indoor environments.



FloorScore® is the most recognized indoor air quality (IAQ) certification standard for hard surface flooring materials, adhesives, and underlayments.

## Declare.

Declare is a transparency platform and product database that is changing the materials marketplace. Declare products that are "LBC Red List Free" or "LBC Red List Approved", have been approved as compliance pathways for the International WELL Building Standard, emphasizing healthy material selection to minimize risks.

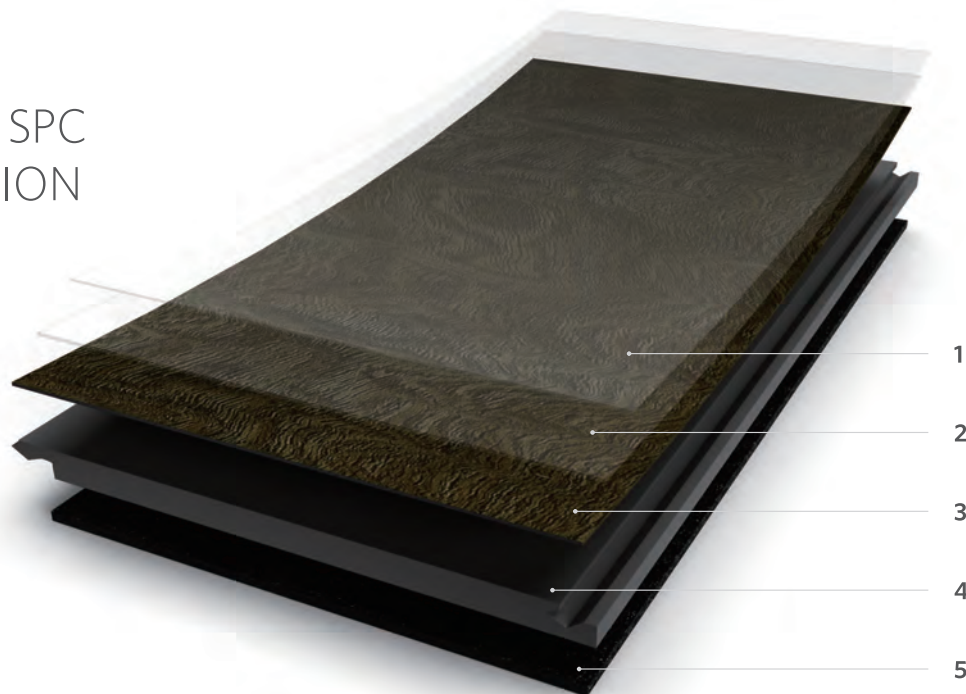


Milliken LVT products are all certified 100% free of ortho-phthalate chemicals.

# STYLE BACKED BY PERFORMANCE

Milliken Floor Covering offers products and expertise in all areas of your commercial spaces, including high-performance entryway systems, modular carpet, luxury vinyl. Simplify your flooring projects by working with a trusted partner that lets you focus on enjoying the process of creating a great space.

## RIGIDFORM™ SPC CONSTRUCTION



**Wear Layer Thickness**  
22 mil (0.55 mm)

- 1. PROGUARD™ REINFORCED POLYURETHANE**  
Provides superior stain and scratch resistance, eliminates the need for polishes/waxes, for reduced maintenance costs and improved Indoor Air Quality (IAQ) performance
- 2. WEAR LAYER**  
Transparent embossed 0.55 mm wear layer provides protection and appearance retention in demanding commercial environments
- 3. PRINTED LAYER**  
High-resolution printed film delivers stunning realistic visuals of wood and stone
- 4. SECURELOCK™ RIGID LAYER**  
This stable layer provides unsurpassed durability that also hides subfloor imperfections, with a locking mechanism that allows for quick and easy adhesive-free installation
- 5. INTEGRAL ACOUSTIC BACKING**  
Pre-attached underlayment minimizes sound, is shock absorbent, provides comfort underfoot and further assists with concealment of subfloor imperfections

**PROGUARD™ 增强PU涂层**  
超强抗污抗刮擦性能, 无需打蜡抛光, 减少维护保养成本, 提升室内空气质量

**耐磨层**  
采用0.55mm透明压花耐磨层, 满足商用环境的使用要求

**印花层**  
高清晰度的印刷彩膜提供逼真的图像

**SECURELOCK™ 硬核层**  
采用硬质核心层工艺, 更结实耐用, 有效应对地面基层缺陷, 锁扣免胶安装更方便, 更环保

**自带隔音垫**  
产品自带的隔音垫减少楼层间噪音传导, 提高脚感舒适度, 并且帮助应对地面基层缺陷

# SPC that works harder *and* smarter



## RIGIDFORM

- Holds heavy loads, i.e. lobby desks
- No acclimation or deformation from temperature
- Can install on raised floor
- Acoustic layer attached, reduce noise transmission, improve underfoot comfort

## 硬核工艺

- 更耐重压
- 无需适温, 温差不易变形
- 可在高架地板安装
- 自带隔音垫, 减少噪音, 提高脚感舒适度



## SECURELOCK

- Strong and durable edge profile
- Waterproof locking mechanism
- Easy installation
- Adhesive-free installation, improve indoor air quality

## 安全锁扣

- 锁扣结实耐用, 不易开裂
- 防水锁扣
- 安装方便
- 免胶安装, 更环保



## PROGUARD

- Scratch- and scuff-resistant
- Resists stains and chemicals
- Easy maintenance, no need for polish/wax

## 专业表层防护

- 耐刮擦
- 耐污迹, 耐化学物质
- 方便日常打理, 无需打磨打蜡



## WARRANTY

Milliken Luxury Vinyl Tile products are backed by a 15 year Heavy Commercial & Lifetime wear warranty, ensuring quality and giving peace of mind.



## ENHANCED INVENTORY PROGRAM

With an enhanced inventory level for large installations containing select patterns and colors, Milliken's Asia based inventory system makes it easy to respond as quickly as possible to your project needs.

# METRO PARK STONE

## RIGIDFORM™ SPC

**Construction** - High Performance Rigid Core Flooring

**Finish** - ProGuard™ Reinforced Polyurethane Coating

**Wear Layer Thickness** - 0.55 mm

**Size** - 18" x 36" (45.7 x 91.4 cm)

**Overall Thickness** - 6.2 mm

**Pieces Per Box** - 5 PCS

**Weight Per Box** - 20.1 kg

**Quantity Per Box** - 2.17 m<sup>2</sup>

**Edge Profile** - Micro Bevel

**Critical Radiant Flux (ASTM E648)** - Pass - Class I

**Smoke Density (ASTM E662)** - Pass - ≤ 450

**Heat Stability by Color Change (ASTM F1514)** - Pass

**Light Stability (ASTM F1515)** - Pass

**Static Coefficient of Friction (ASTM D2047)** - Pass

**Determination of Dimensional Stability & Curling after Exposure to Heat (ISO 23999)**  
- Pass

**Resistance to Chemicals (ASTM F925)** - Pass

**Static Load Limit (ASTM F970)** - Pass

**Installation** - SecureLock™ locking mechanism

**Warranty** - 15 Year Limited Commercial Wear Warranty

**产品结构** - 高性能硬核地板

**表层工艺** - ProGuard™ 增强聚氨酯涂层

**耐磨层厚度** - 0.55 mm

**尺寸** - 18" x 36" (45.7 x 91.4 cm)

**总厚度** - 6.2 mm

**每箱片数** - 5片

**每箱重量** - 20.1 kg

**每箱数量** - 2.17 m<sup>2</sup>

**倒角类型** - 微倒角

**临界辐射通量 (阻燃性) (ASTM E648)** - 通过, 一级

**抗烟雾浓度 (ASTM E662)** - 通过 - ≤ 450

**耐热性能 (ASTM F1514)** - 通过

**耐光性能 (ASTM F1515)** - 通过

**静摩擦系数 (ASTM D2047)** - 通过

**受热尺寸稳定性及翘曲 (ISO 23999)**  
- 通过

**耐化学性能 (ASTM F925)** - 通过

**静态载荷极限 (ASTM F970)** - 通过

**安装方式** - 安全锁扣系统

**质保** - 15年商用耐磨层有限质保

## LVT ENVIRONMENTAL STANDARDS

Milliken LVT is highly durable resilient flooring engineered with the highest quality raw materials to provide unsurpassed performance and enduring aesthetics. Milliken LVT is 100% ortho-phthalate-free. Milliken LVT is manufactured at facilities that are ISO 9001 and ISO 14001 compliant.



**Declare.**



Specifications are subject to normal manufacturing tolerances and may be changed without prior notice. Images in this brochure are approximate for color and pattern scale. Please use actual product samples to make your final selections.

### China

North & North West &  
South West Of China  
T +86 10 6465 1206  
T +86 133 0101 8460  
South of China &  
HK & Macau  
T +86 181 1743 0032  
East & Central of China  
T +86 21 6145 1758

### India

Bangalore  
T +91 98408 98963  
Delhi  
T +91 95010 11800  
Hyderabad  
T +91 99631 64059  
Mumbai  
T +91 98926 00362

### Rest of Asia

Manila  
T +63 915 816 7127  
Seoul  
T +82 2 3783 0747  
Singapore  
T +65 6593 1301  
Tokyo  
T +81 3 5203 8406  
Jakarta  
T +6221 2960 7222



[www.millikencarpet.com](http://www.millikencarpet.com)

2710030841

Issued Mar2022